

Talma Road, Brixton, SW2

2 bedroom house for sale

£1,100,000

Freehold

Property Details

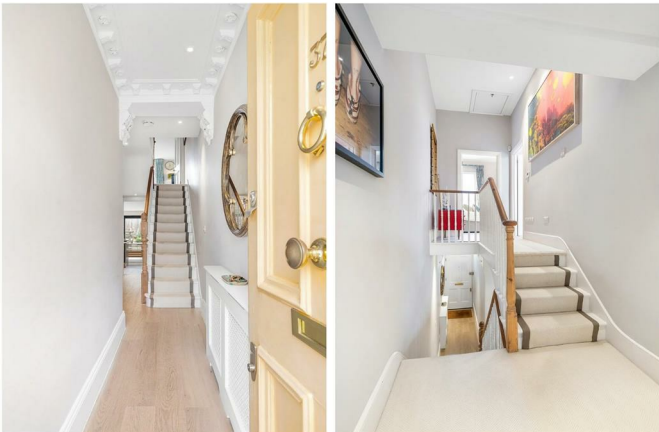
A stunning two double bedroom Victorian house on ever-popular Talma Road in the heart of Brixton. Beautifully presented and full of character, this charming home has been lovingly cared for, creating a stylish, welcoming space ready to move into. Spanning over 1,150 square feet, the property offers an excellent balance of living and entertaining space. A bright front reception room showcases classic proportions, high ceilings, ornate coricing and a feature fireplace, bathed in natural light. To the rear, a thoughtfully extended kitchen-diner forms the heart of the home, with shaker cabinetry, stone worktops, open shelving and striking finishes. Skylights and bi-fold doors open onto a landscaped garden, backing onto a playground for added privacy. Upstairs, two well-proportioned bedrooms are positioned separately. A luxurious bathroom, cellar storage and potential to extend into the loft (STPP) complete this appealing home. A separate utility area and downstairs WC enhance practicality, while the garden benefits from no houses directly behind either.

Features

- Two spacious double bedrooms
- Large bathroom plus downstairs WC and utility
- Large, low-maintenance garden
- Beautifully presented Victorian freehold house
- Potential to extend STNP
- Sought-after residential street
- Central Brixton a four-minute walk
- Herne Hill around a twelve-minute stroll
- Brockwell Park nearby
- Chain-free

Council tax band E EPC rating E (51)





Talma Road, Brixton, SW2

Talma Road, SW2
2 Bedroom House

APPROXIMATE GROSS INTERNAL AREA WITH CELLAR: **1224 SQ FT / 113.7 SQ M**

APPROXIMATE GROSS INTERNAL AREA WITHOUT CELLAR: **1162 SQ FT / 107.9 SQ M**



While we try our very best, floor plans are produced as a guide only and we take no responsibility for the precise accuracy with which any property is represented.

Talma Road, Brixton, SW2

