



**JOWEBSTER**

*Anchor House*  
Smugglers Way, SW18



### Property Attributes

- 5 Bedrooms
- 3 Bathrooms
- Direct West & East Facing River Views
- 6th Floor
- Underground Parking (Extra Cost)



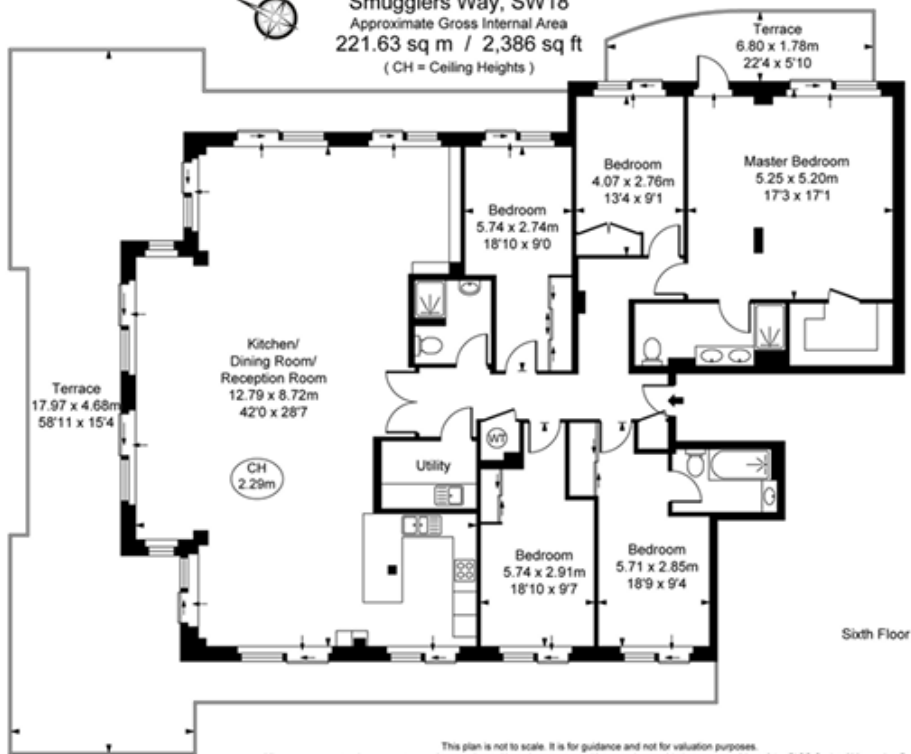
### Terms

- Price: £1,500,000
- Borough: London Borough of Wandsworth
- Tenure: Leasehold approx. 980 years remaining
- Service Charge: £9,500
- Ground Rent: Peppercorn
- Council Tax Band: Band H





**Anchor House,  
Smugglers Way, SW18**  
Approximate Gross Internal Area  
**221.63 sq m / 2,386 sq ft**  
( CH = Ceiling Heights )



This plan is not to scale. It is for guidance and not for valuation purposes.  
All measurements and areas are approximate only, and have been prepared in accordance with the current edition of the RICS Code of Measuring Practice.  
© Fulham Performance

+44 (0) 20 7349 7055  
sales@jowebster.com

**Misdescription Act**

We wish to advise prospective purchasers that these sales particulars are believed to be correct, but their accuracy is in no way guaranteed, nor do they form any part of contract. We have not carried out a detailed survey nor tested the services, appliances or specific fittings. Measurements are approximate.