



LOW LANING LANING

SEDBERGH, LA10 5QJ

£140,000
FREEHOLD

Being Sold via Secure Sale online bidding. Terms & Conditions apply. Starting Bid £140000

Low Laning is a quaint two-bedroom end terrace cottage with lots of potential located in the desirable Dales village of Dent. Dent itself is a charming, historical village in the sought after Yorkshire Dales National Park, perfect for those wanting to explore the natural beauty of the Dales. Dent has its own primary school, village shop, cafes, pubs and is a short drive from Sedbergh and Kirkby Lonsdale.



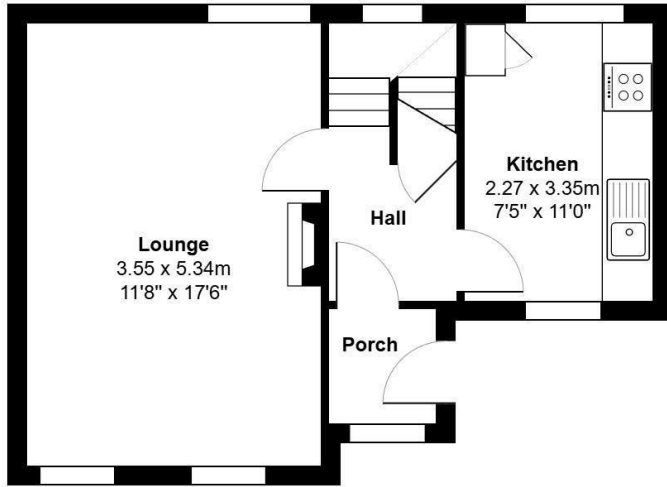
LOW LANING LANING

- Spacious Lounge with Multifuel Stove
- Modern Kitchen with Integrated oven
- Two double bedrooms with built in storage
- Bathroom with electric shower
- Patio yard and outside storage
- No Chain

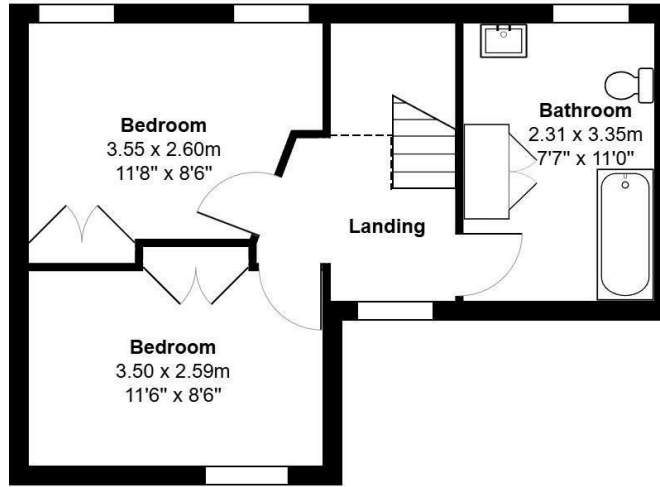


LOW LANING LANING





Ground Floor



First Floor

For illustrative purposes only - not to scale. The position and size of features are approximate only.
© North West Inspector.



Energy Efficiency Rating		Current	Potential
<i>Very energy efficient - lower running costs</i>			
(92 plus) A			
(81-91) B			
(69-80) C			
(55-68) D			
(39-54) E			
(21-38) F			
(1-20) G			
<i>Not energy efficient - higher running costs</i>			
England & Wales		EU Directive 2002/91/EC	

EPC Rating: Council Tax Band: C

Agents Note: Whilst every care has been taken to prepare these particulars, they are for guidance purposes only. All measurements are approximate and are for general guidance purposes only and whilst every care has been taken to ensure their accuracy, they should not be relied upon and potential buyers/tenants are advised to recheck the measurements

Cobble Country
59 Main Street
Sedbergh
Cumbria
LA10 5AB

01539621000
Sedbergh@cobblecountry.co.uk

