



- A semi-detached home offered for sale with no onward chain
- Spacious lounge diner with pleasant views and patio doors onto garden
- Kitchen providing a range of units and overlooking rear garden
- Two double bedrooms and family bathroom with shower over bath
- Integral garage with electric door and direct access to house
- Private drive parking and fully enclosed garden to rear, no onward chain!



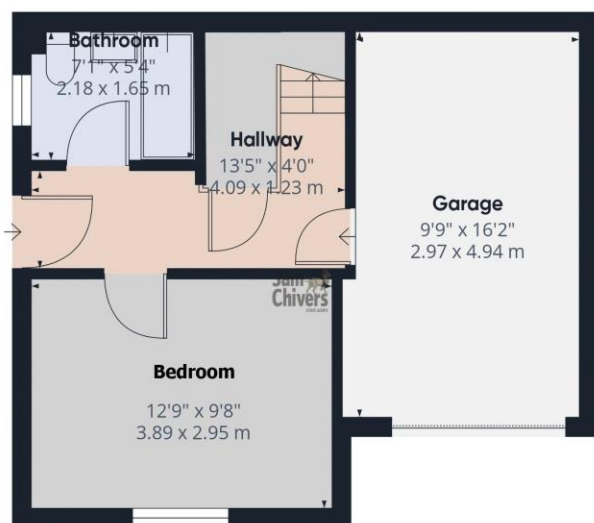
"A two-bedroom semi-detached property situated in a popular and convenient location, backing onto the Midsomer Norton Greenway and offered for sale with no onward chain".

The accommodation comprises, ground floor: entrance hallway, main bedroom, bathroom with shower over bath and door from hallway directly into the integral garage. On the first floor is a light and airy lounge dining room enjoying pleasant views to front and patio doors onto the rear garden. Fitted kitchen and another double bedroom. There is mains gas central heating and double glazing. Outside to front are two private drive areas, one leading to front door and the other situated to the front of the garage. There is a handy bin storage area and store cupboard. The garage has an electric up and over door, power and lighting. To the rear is a fully enclosed garden with a paved patio area and steps leading to a gradient lawn which adjoins a natural hedgerow and the Greenway, which provides the ideal facility for leisure pursuits such as cycling, jogging and dog walking.

AGENTS NOTE: Subject to the necessary permissions being granted and regulations met, it is thought the garage could be converted to an additional room, the adjoining property has already achieved this.

Tenure: Freehold. **Council Tax Band:** B





Floor 0



Floor 1

Approximate total area⁽¹⁾

796 ft²
74.1 m²

(1) Excluding balconies and terraces

Calculations reference the RICS IPMS 3C standard. Measurements are approximate and not to scale. This floor plan is intended for illustration only.

GIRAFFE360



Find us online!



www.samchiversproperty.co.uk



Facebook: Sam Chivers Estate Agents



Instagram: @samchiversestateagents

rightmove  Zoopla

Score	Energy rating	Current	Potential
92+	A		
81-91	B		
69-80	C	75 C	90 B
55-68	D		
39-54	E		
21-38	F		
1-20	G		

Sam Chivers Estate Agents can also provide mortgage and conveyancing recommendations should you require such a service. Please contact our office on:

01761 411020 or email us at sales@samchiversproperty.co.uk

These sales particulars provide an approximate guide and form no part of a contract. It is the purchaser's responsibility to satisfy themselves that the property has been accurately described and that all fixtures and apparatus are functioning correctly. Your home may be at risk if you do not keep up repayments secured against it.