



22E Buchanan Drive, Newton Mearns, G77 6QN
www.nicolestateagents.co.uk



Nicol Estate Agents







Nicol Estate Agents

Situation

This popular suburb is located approximately 9 miles to the South of Glasgow's City Centre and is conveniently situated for commuter access to nearby M77/M8 & Glasgow Southern Orbital.

Recognised as providing amongst the highest standards of local amenities, Newton Mearns offers an array of healthcare centres, banks and libraries and a broad range of supermarkets, boutique shops and restaurants, including The Avenue Shopping Centre. Only a short walk away are the local shops and Co-op on Harvie Avenue and the Greenlaw Retail Park which includes Waitrose, Tesco Metro, Aldi and a range of bars and restaurants. Patterton Train Station is a short distance from the property.

Local sports and recreational facilities include David Lloyd Rouken Glen, Parklands Country Club, Williamwood, Whitecraigs and Cathcart Golf Clubs and Whitecraigs Tennis Club, as well as East Renfrewshire Council's own excellent sports and leisure facilities at Eastwood Toll. If you are an outdoors lover, Rouken Glen Park, voted Best Park in the UK 2016, is nearby with walking trails through the woods, a great adventure play area, a skate park, five a side football pitches and a boating pond.

In addition, this property sits within the catchments area for the highly reputable Primary and Secondary schools.







Nicol Estate Agents

Property Description

An impressive and upgraded two bedroom second floor flat, built by Dickie, enjoying an open outlook to front, situated within this popular development with attractively landscaped resident's gardens, close to local amenities and Patterton Train Station.

This spacious flat has been upgraded and well maintained by the present owners and affords well appointed accommodation, with a tree lined outlook.

At present, the accommodation comprises:

Controlled door entry security system leads to a well-kept and illuminated communal entrance and stair access to all levels. Welcoming reception hallway with storage. A bright and spacious sitting room/dining room enjoys an open tree lined outlook to the front. Stunning, refitted kitchen with a full complement of wall mounted and floor standing units, integrated appliances, complementary worktops and breakfasting bar. Useful laundry/utility cupboard. Bedroom one with open fitted wardrobes. Bedroom two, again a double bedroom with open fitted wardrobes and underfloor heating. An attractively refitted bathroom with three piece suite and shower above bath, completes the accommodation.

The property is further complemented by replacement electric heating, oak internal doors, and double glazing. Attic provides extensive additional storage.

This property benefits from a single garage.

Additional residents parking provided.

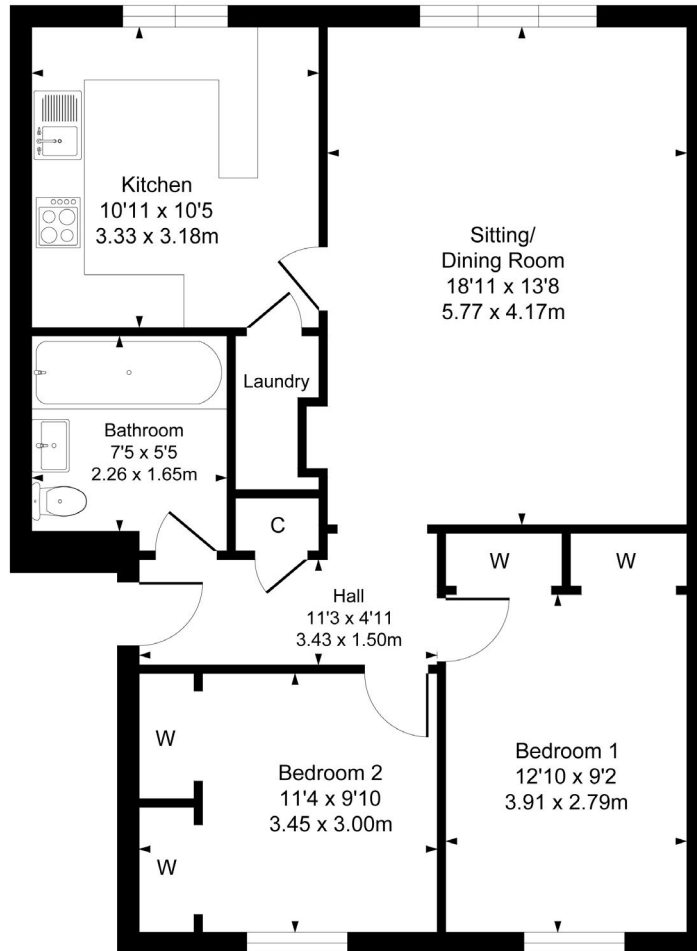


www.nicolestateagents.co.uk





22 E Buchanan Drive, Newton Mearns
Approximate Gross Internal Area
798 sq ft - 74.13 sq m



SKETCH PLAN FOR ILLUSTRATIVE PURPOSES ONLY All measurements, walls, doors, windows, fitting and appliances, their sizes and locations are approximate only. They cannot be regarded as being a representation by the seller, nor their agent. We believe these details to be accurate however it is not guaranteed and they do not form any part of a contract. Fixtures and fittings are not included unless specified in the enclosed. Photographs are for general information and it must not be inferred that any item is included for sale with the property.



Nicol Estate Agents

Viewing

By appointment through
Nicol Estate Agents
Newton Mearns

Outgoings

East Renfrewshire Council
Band D

Fixtures & Fittings

Only items specifically mentioned in the sale particulars are included in the sale price.

Energy Efficiency Rating

Band C

Services

The property will be supplied by mains water, electricity and drainage. Electric central heating.

Local Authority

East Renfrewshire Council
Council headquarters
Eastwood Park
Rouken Glen Road
Giffnock G46 6UG
Tel: (0141) 577 3000

Property Reference

3593