

**2 Bed  
Apartment  
located in 141 Chester Road**

**AiHOMES.**

550420ET, 141 Chester  
Road, Manchester



## £2,150 Per Calendar Month

Welcome to this charming apartment located at 141 Chester Road in the vibrant city of Manchester. Spanning an impressive 936 square feet, this well-appointed residence offers a perfect blend of comfort and modern living.

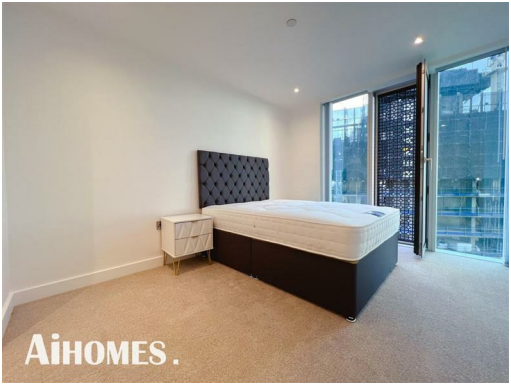
The apartment features two spacious bedrooms, providing ample space for relaxation and privacy. Each bedroom is thoughtfully designed to create a serene atmosphere, ideal for unwinding after a long day. With two bathrooms, convenience is at your fingertips, ensuring that morning routines and evening rituals can be carried out with ease.

Situated in a desirable location, this property is well-connected to the heart of Manchester, offering easy access to a variety of shops, restaurants, and cultural attractions. Whether you are a young professional seeking a lively urban lifestyle or a small family looking for a welcoming home, this apartment caters to a range of needs.

The layout of the apartment is both functional and inviting, making it a perfect choice for those who appreciate contemporary living. With its generous living space and modern amenities, this property is sure to impress.

Do not miss the opportunity to make this delightful apartment your new home in Manchester.

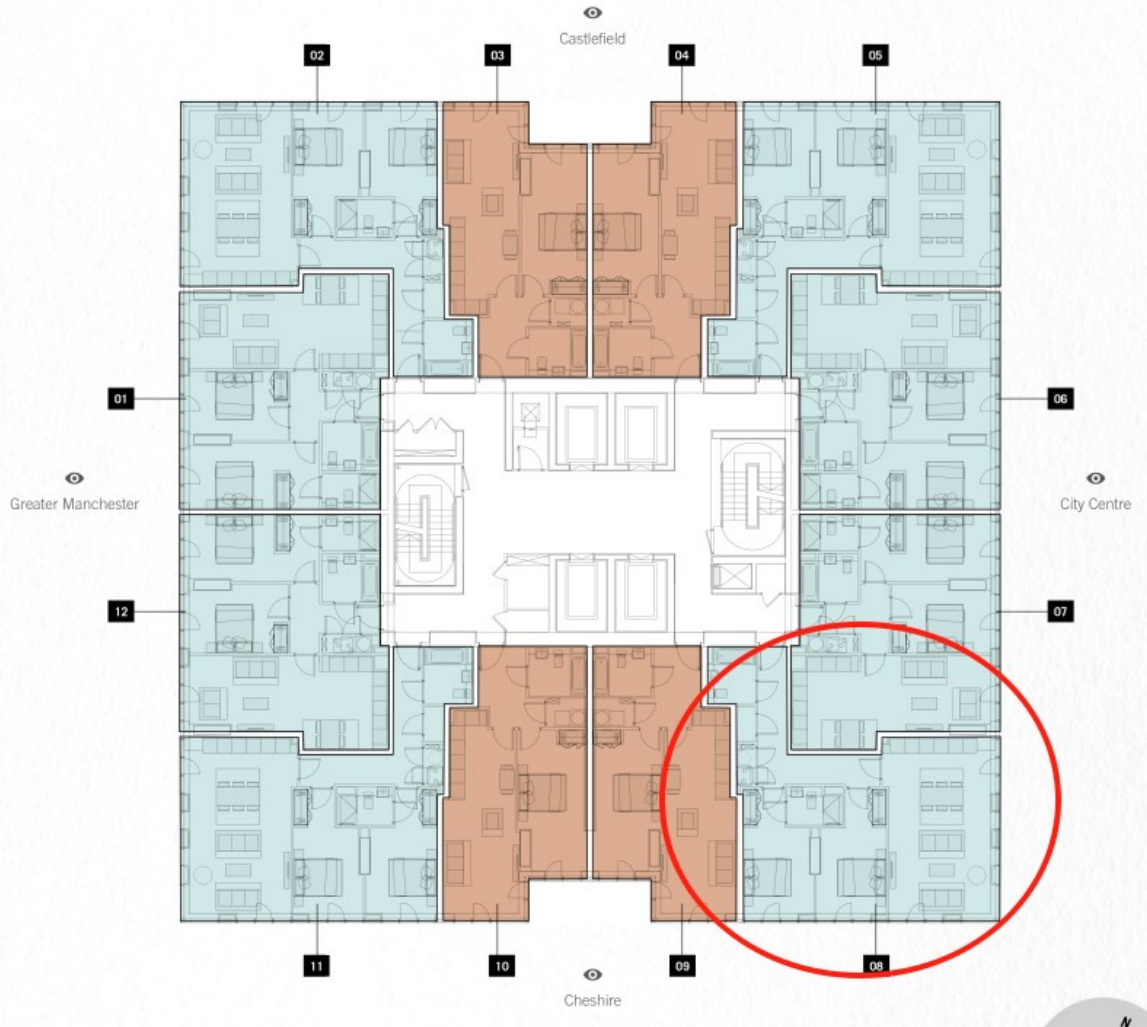







**550420ET, 141 Chester Road, Manchester**





Energy Efficiency Rating		
	Current	Potential
Very energy efficient - lower running costs		
(92 plus) <b>A</b>		
(81-91) <b>B</b>	<b>84</b>	<b>84</b>
(69-80) <b>C</b>		
(55-68) <b>D</b>		
(39-54) <b>E</b>		
(21-38) <b>F</b>		
(1-20) <b>G</b>		
Not energy efficient - higher running costs		
<b>England &amp; Wales</b>	EU Directive 2002/91/EC 	

**EPC Rating: B**  
**Council Tax Band: D**

**CONTACT**

5th floor, Empress Business Center  
 380 Chester Road  
 Manchester  
 M16 9EA

E: [info@aihomes.uk](mailto:info@aihomes.uk)

T: 0127 332 8069

