



Victoria Street, Burton-On-Trent



Property Description

An extended, spacious, three bedroom, two reception room family home in a highly popular area of Burton on Trent that is a perfect property for a growing family or buy to let investor! With two separate reception rooms, an extended kitchen, modern bathroom and separate toilet, three double bedrooms and an outbuilding to the rear that could be a perfect home office! Book your viewing with Burchell Edwards today!

Guest W.C

W.C, wash hand basin and vanity unit.

Lounge

Double glazed window to rear elevation, stairs to first floor accommodation, central heating radiator and laminate flooring.

Dining Room

Double glazed window and door to front elevation, central heating radiator and laminate flooring.

Kitchen

Double glazed door and window to side elevation, a range of wall and base units with work surface over incorporating a sink with drainer unit, electric oven, gas hob, extractor hood, space for fridge and freezer, space and plumbing for washing machine.



Landing

Central heating radiator, laminate flooring and all doors off.

Bedroom One

Double glazed window and central heating radiator.

En-Suite

Shower, W.C and wash hand basin.

Bedroom Two

Double glazed window to rear elevation and central heating radiator.

Bedroom Three

Double glazed window to rear elevation and central heating radiator.

Bathroom

Double glazed window to side elevation, p shaped bath with shower over, W.C, wash hand basin, two heated towel rails, tiling to walls and tiled flooring.

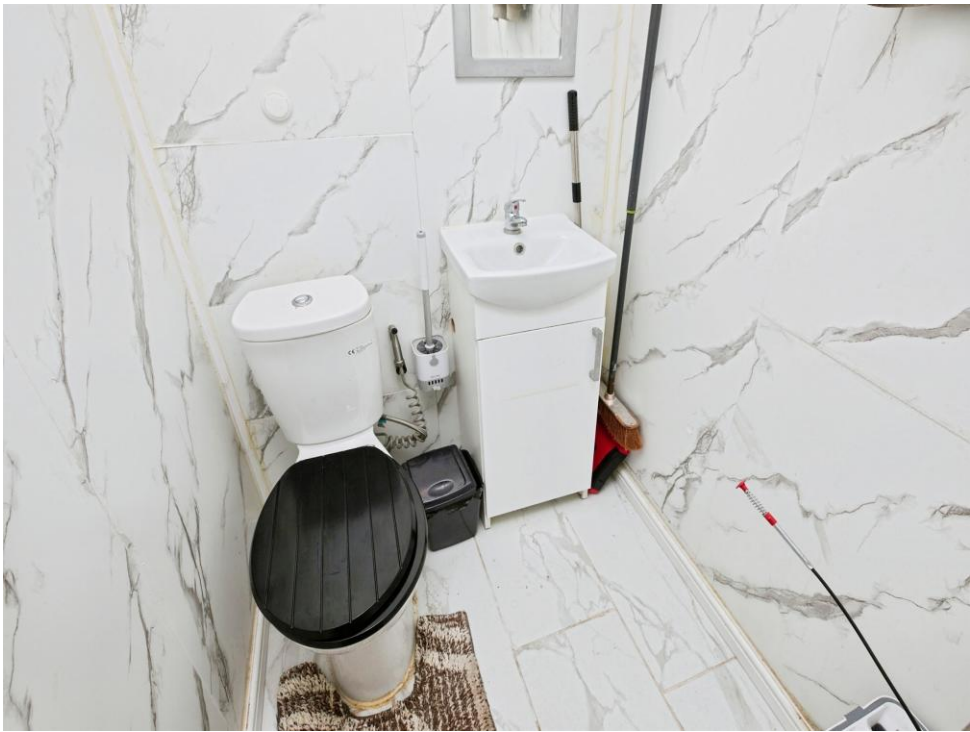
Rear Garden

Block paved patio, laid to lawn and gated access to frontage.

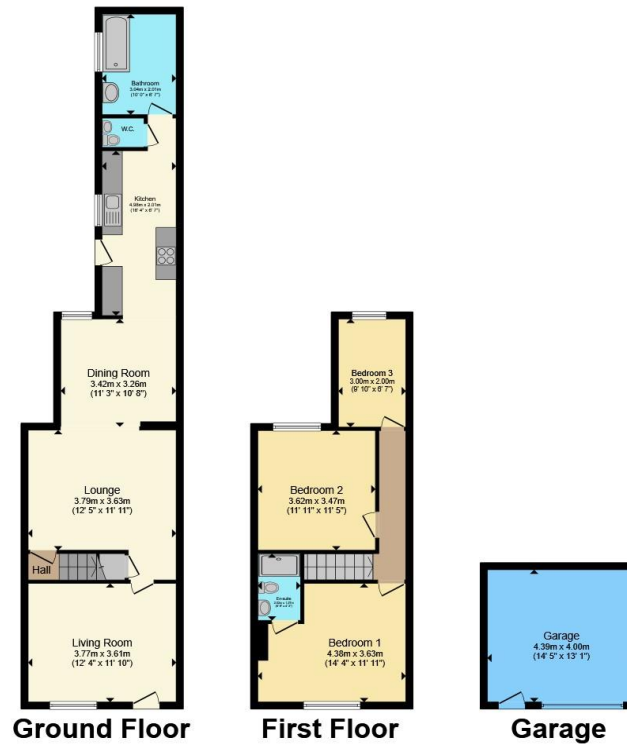
Outbuilding

Electric and lighting, laminate flooring, double glazed window and door.









Total floor area 128.0 m² (1,378 sq.ft.) approx

This floor plan is for illustrative purposes only. It is not drawn to scale. Any measurements, floor areas (including any total floor area), openings and orientation are approximate. No details are guaranteed, they cannot be relied upon for any purpose and they do not form part of any agreement. No liability is taken for any error, omission or misstatement. A party must rely upon its own inspection(s). Powered by www.propertybox.io



To view this property please contact Burchell Edwards on

T 01283 530 169
E burton@burchelledwards.co.uk

Britannia House Station Street
 BURTON-ON-TRENT DE14 1AN

EPC Rating: D Council Tax
 Band: B

Tenure: Freehold

view this property online burchelledwards.co.uk/Property/BUT211432



1. MONEY LAUNDERING REGULATIONS Intending purchasers will be asked to produce identification documentation at a later stage and we would ask for your co-operation in order that there will be no delay in agreeing the sale. 2. These particulars do not constitute part or all of an offer or contract. 3. The measurements indicated are supplied for guidance only and as such must be considered incorrect. Potential buyers are advised to recheck measurements before committing to any expense. 4. We have not tested any apparatus, equipment, fixtures, fittings or services and it is in the buyers interest to check the working condition of any appliances.

Burchell Edwards is a trading name of Connells Residential which is registered in England and Wales under company number 1489613, Registered Office is Cumbria House, 16-20 Hockliffe Street, Leighton Buzzard, Bedfordshire, LU7 1GN. VAT Registration Number is 500 2481 05.

See all our properties at www.burchelledwards.co.uk | www.rightmove.co.uk | www.zoopla.co.uk

Property Ref: BUT211432 - 0002