



Millfield Road, TW4

£425,000

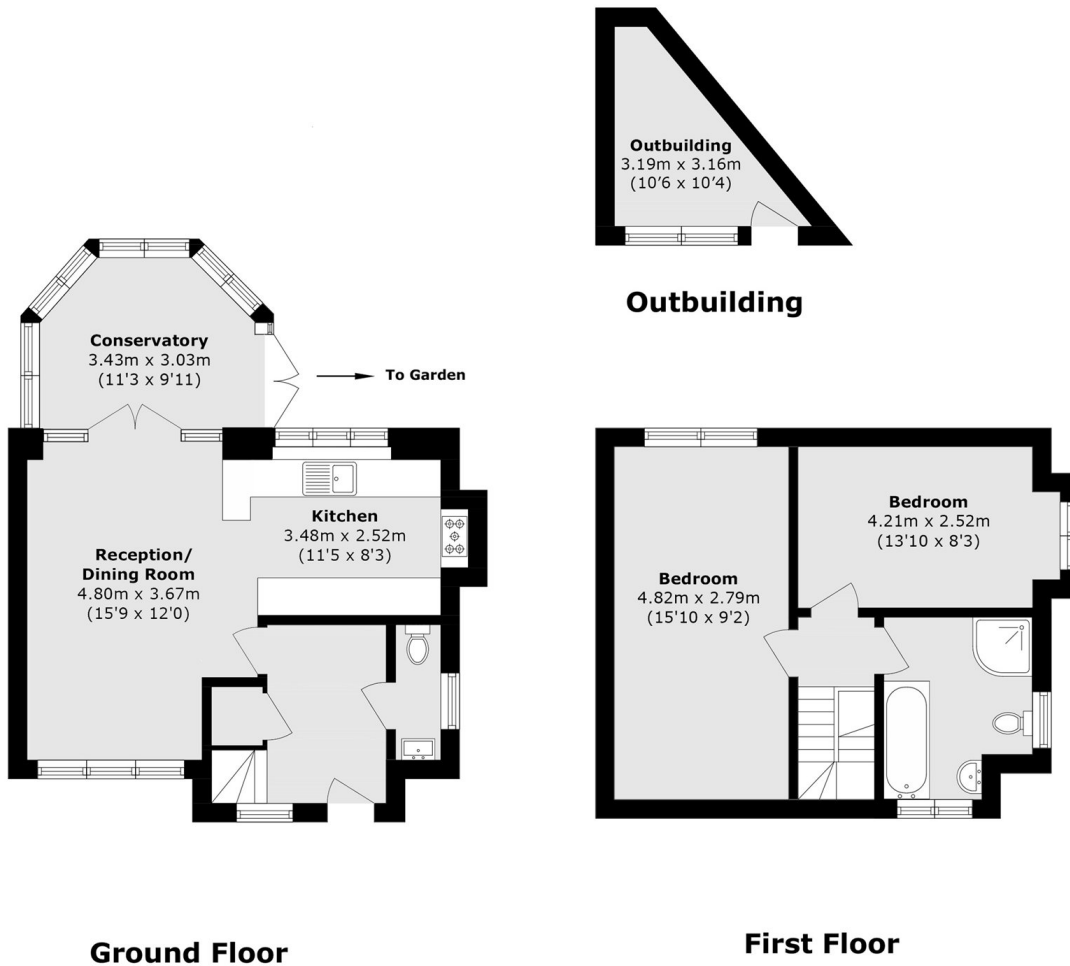
A rare opportunity to acquire this fantastic two bedroom detached house offered to the market with no onward chain. Benefitting from off street parking and in good condition throughout.

Millfield Road is located just a short distance South of Hounslow West, making it well connected for commuting. The Orchard Primary School and Suffah Nursery & Primary School, along with several others within about a mile such as St Michael & St Martin Primary School. Whitton train station is about 1.1 miles away, making it the nearest National Rail station.

Features

- Two Bedrooms
- Detached
- Off Street Parking
- No Onward Chain
- Private Garden
- Modern Throughout

Millfield Road, Hounslow, TW4



Total Area (approx.): 82.3 sq. m (885.8 sq. ft)
Outbuilding area (approx.): 5.86 sq. m (63.0 sq. ft)