



Clapham Road, SW9

£650,000

Dexters



Clapham Road, SW9

A beautifully presented two bedroom, two bathroom raised ground floor garden flat, ideally situated Clapham Road. Offering well balanced accommodation throughout, the property features a bright and spacious reception room, a modern fitted kitchen, two generous double bedrooms, and two contemporary bathrooms. To the rear, a private garden. The property further benefits from being sold chain free.

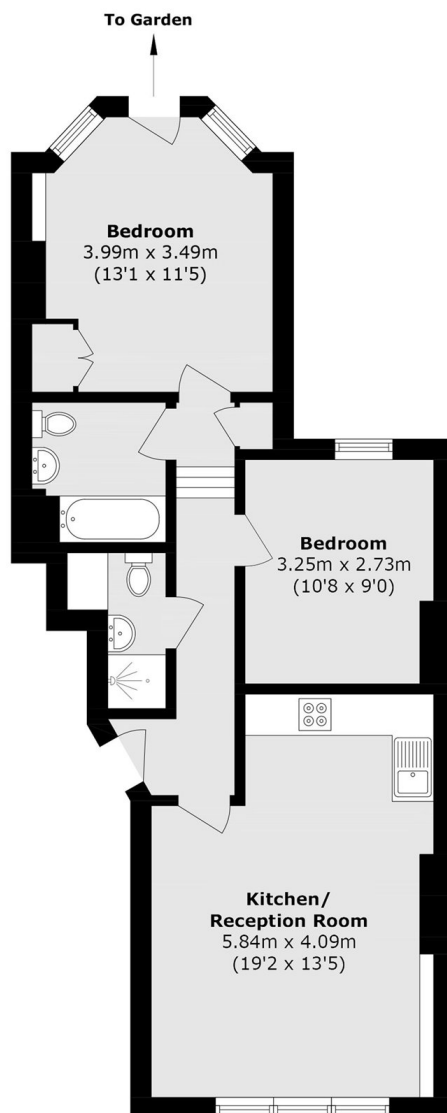
Conveniently located for the excellent amenities of Clapham, Stockwell, and Brixton, the property enjoys easy access to a wide range of shops, cafés, bars, and restaurants. Superb transport links are available nearby, with Stockwell Underground Station (Victoria and Northern Lines) and Clapham North Underground Station providing swift connections into Central London and beyond.

Features

- Two Bedroom
- Two Bathroom
- Private Garden
- Chain Free



Clapham Road, London, SW9



Total area (approx): 58.6 sq. m (630.7 sq. ft)