



2 Bed
Flat
located on Thornhill
Road, Coventry

£950 Per Calendar Month

UP Estates



UP Estates

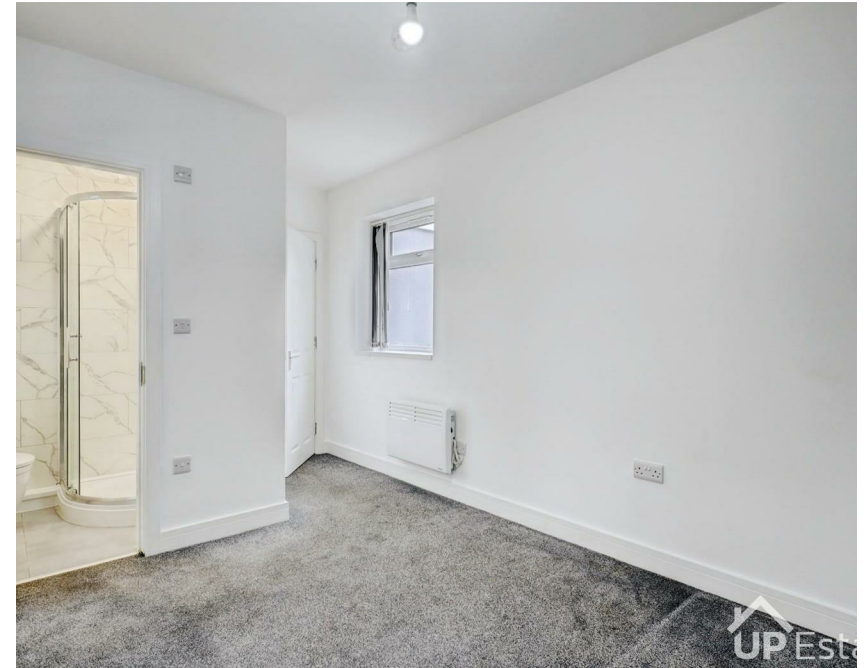
PROPERTY SUMMARY

MODERN TWO BEDROOM GROUND FLOOR FLAT | PRIVATE
ENTERANCE | AVAILABLE NOW | TWO SHOWER ROOMS | OPEN PLAN
LIVING | EXCELLENT TRANSPORT LINKS

Situated just off Leicester Causeway, this fully modernised two bedroom ground floor flat offers stylish and convenient living in a well connected location. The property benefits from excellent transport links and is within close proximity to local amenities, making it ideal for professional tenants.

The accommodation briefly comprises a bright open plan kitchen and living room, finished to a modern standard and providing a comfortable space for relaxing and dining. There are two spacious double bedrooms, one of which benefits from its own ensuite shower room. A modern family shower room serves the remainder of the property.

Offered to the market as a lettings property and available immediately, this well presented flat is ready for tenants to move straight into.



2



2



1



E

Property Address:
Thornhill Road,
Coventry,
CV1 4HS



CONTACT

Up Estates
6 Orchard Court
Binley Business Park
Coventry
Warwickshire
CV3 2TQ

E: lettings@upestates.co.uk
T: 024 7771 0780
www.upestates.co.uk