

# first for homes

first for property in life - [firstforhomes.co.uk](https://www.firstforhomes.co.uk)

Contact Allan England's Team

01592 752 944



Dunbeath Drive, Glenrothes  
**Offers over £127,995**

# Dunbeath Drive, Glenrothes

Beautifully presented spacious 3-Bedroom Extended Terraced Villa Situated Within Highly Desirable Area Of Glenrothes!

Allan England's Award-Winning Team at first for homes are proud to present to the market this beautifully presented 3-Bedroom Extended Family Home situated within the highly desirable area of Pitteuchar, Glenrothes. The property offers on the ground floor level: entrance hall, lounge/diner and sunroom, kitchen. The upper level boasts 3 generous bedrooms and family bathroom with overhead shower. Lovely gardens to the front and rear. Ideal First Time Buyer or Buy-to-Let Investment. Early viewing advised to ensure you don't miss out!

Call first for homes - first for trust... first for service... first for aftercare.

EPC Rating C  
Council Tax B  
Home Report Value £135,000

Glenrothes is regarded as one of the most successful Towns in Scotland with a wealth of local amenities including Kingdom Shopping Centre as well as sport and leisure at Michael Woods and a multi-screen cinema. Glenrothes boasts its very own 18-hole Golf course and both Primary and Secondary schooling are available. For the commuter the A92 allows swift access to Edinburgh and there are railway stations at both Thornton and Markinch.

These particulars are prepared on the basis of information provided by our clients. We have not tested the electrical system or appliances, nor where applicable, any central heating system. All sizes are recorded by electronic tape measurements to give an indicative, approximate size only. Prospective purchasers should make their own enquiries - no warranty is given or implied. This schedule is not intended to, and does not form any contract.





## SITUATION – Glenrothes

### ENTRANCE VESTIBULE

### LOUNGE/DINER

21'8" x 12'5" approx (6.61m x 3.81m approx)

**KITCHEN** 12'9" x 7'1" approx (3.91m x 2.16m approx)

### SUNROOM

10'5" x 6'10" approx (3.20m x 2.10m approx)

### BEDROOM 1

10'6" x 10'1" approx (3.21m x 3.08m approx)

### BEDROOM 2

12'6" x 8'10" approx (3.82m x 2.70m approx )

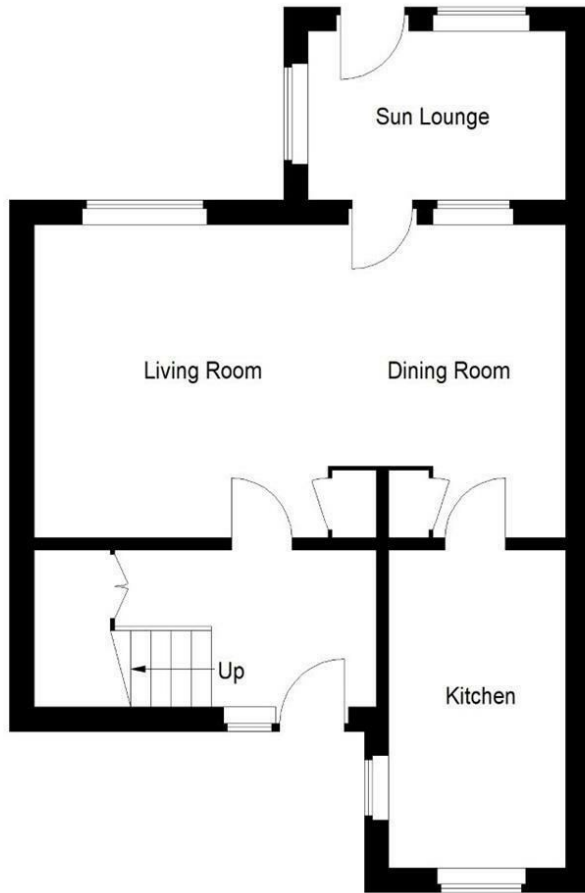
**BEDROOM 3** 9'8" x 7'2" approx (2.96m x 2.20m approx)

### FAMILY BATHROOM

### GARDEN GROUNDS

### INFORMATION





Ground Floor

First Floor

Illustration for identification purposes only, measurements are approximate, not to scale.  
FloorplansUsketch.com © 2021 (ID 767576)

## Information

These particulars are prepared on the basis of information provided by our clients. We have not tested the electrical system or any electrical appliances, nor where applicable, any central heating system. All sizes are recorded by electronic tape measurement to give an indicative, approximate size only. Prospective purchasers should make their own enquiries – no warranty is given or implied. This schedule is not intended to, and does not form any contract.

## FREE Valuation

### Selling Your Home?

Choose first for homes - a highly experienced estate agency team you can trust to sell your home at the highest possible price. Offering fantastic savings on selling fees, with no compromise on service, free professional photography highlighting your home in its best light, first for homes will be your first choice. Contact us today to arrange your appointment.



**first for trust**



**first for service**



**first for aftercare**

**first for homes**  
first for property in life - [firstforhomes.co.uk](http://firstforhomes.co.uk)

Contact Allan England's Team  
**01592 752 944**

32 North Street, Glenrothes, Fife KY7 5NA  
Fax: 01592 807947  
[sales@firstforhomes.co.uk](mailto:sales@firstforhomes.co.uk)  
[www.firstforhomes.co.uk](http://www.firstforhomes.co.uk)