



Sandycombe Road

Kew, TW9

£1,750 per month
(£403.85 per week)

A spacious & bright one bedroom flat on the first floor of this period building in the heart of Kew, moments to Kew Gardens & North Sheen station. EPC rating D

CHESTERTONS



Sandycombe Road

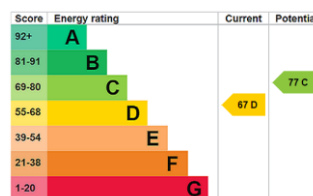
Kew, TW9

- Period Conversion
- Spacious Reception
- Large Kitchen
- Double Bedroom with Built in Wardrobes
- Close To Kew Bridge Station



A spacious & bright one bedroom flat on the first floor of this period building in the heart of Kew, moments to Kew Gardens & North Sheen station. Comprising of a large reception, spacious separate kitchen, double bedroom with built in wardrobes and modern bathroom. EPC rating D.

Minimum Term: 12 months
Deposit Required: five weeks
Local Authority: London Borough Of Richmond Upon Thames
Council Tax Band: D
EPC Rating: D
Furnished

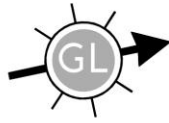


Chestertons Kew Lettings

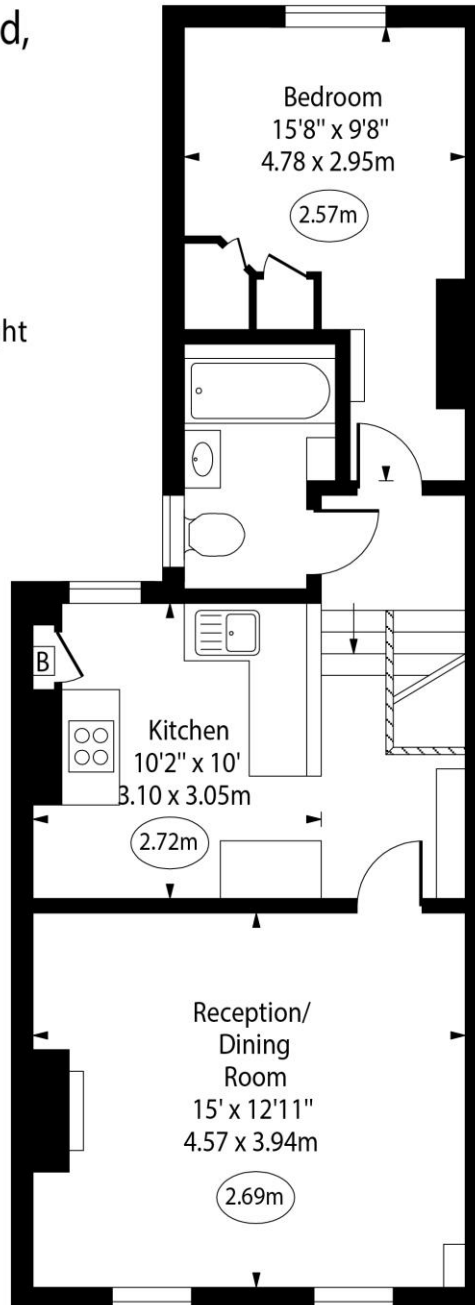
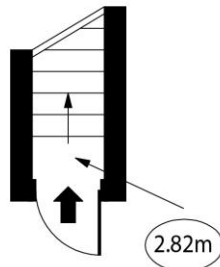
1 Royal Parade
 Richmond
 Surrey
 TW9 3QD
kewlettingsusers@chestertons.co.uk
 02081040340
chestertons.co.uk

Additional tenant charges apply (fees apply to non-AST tenancies only)
 Tenancy Agreement Fee: £300
 References per Tenant/Guarantor: £60
 Inventory check (approx. £100 – £250 inc. VAT)
chestertons.co.uk/property-to-rent/applicable-fees

Sandycombe Road,
Kew, TW9



○ - Ceiling Height



Ground Floor
Entrance

First Floor

Approx Gross Internal Area 564 Sq Ft - 52.40 Sq M

Every attempt has been made to ensure the accuracy of the floor plan shown. However, all measurements, fixtures, fittings, and data shown are approximate interpretations and for illustrative purposes only. Measured according to the RICS. Not To Scale.

www.goldlens.co.uk

Ref. No. 030121M

