



**OVER 60?**

Secure this property  
for up to **59% less!**

**Price**

**£275,000**

**Freehold**

2x  1x  1x 

**Riverside Close,  
Kingsnorth, Ashford,  
Kent, TN23**

*Wards*  
Helping you move forwards



## Main features

- 2 Bedroom end of terrace home
- Parking included
- Generous rear garden
- Close to local amenities and primary school
- Situated in quiet cul-de-sac location

## Accommodation

### GROUND FLOOR

Entrance Hall

Lounge: 18'11 x 18'2 (5.77m x 5.54m)

Kitchen: 18'2 x 16'5 (5.54m x 5.01m)

### FIRST FLOOR

Landing

Bedroom 2 : 13'4 x 11'11 (4.07m x 3.63m)

Bathroom

Bedroom 1 : 18'8 x 16'10 (5.69m x 5.13m)

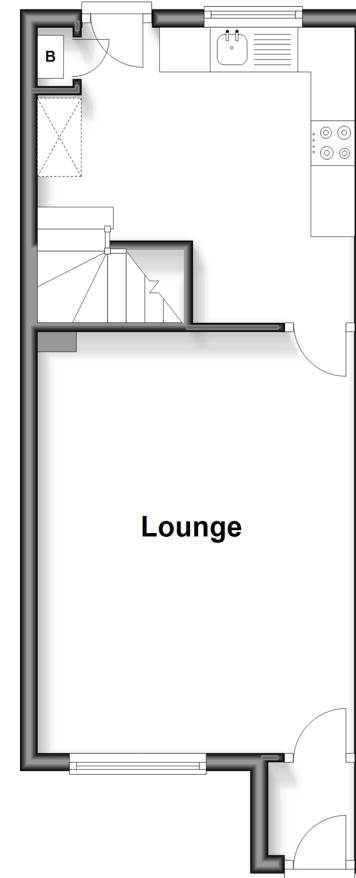
### OUTSIDE

Front and Rear Gardens

Allocated Parking

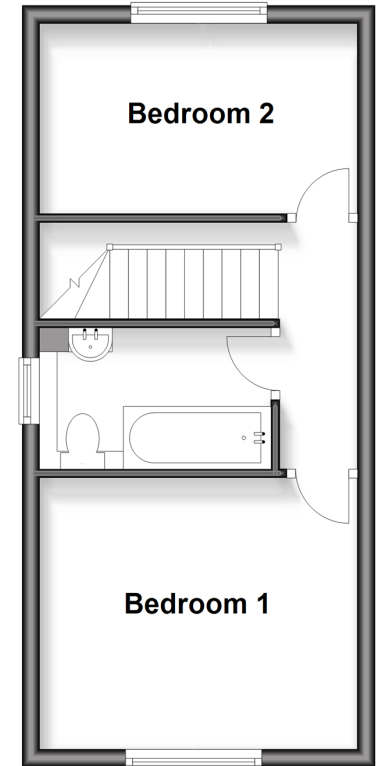
### Ground Floor

Approx. 30.5 sq. metres (328.1 sq. feet)



### First Floor

Approx. 29.4 sq. metres (316.0 sq. feet)



**Call Ashford - 01233 639531 ■ [wardsof Kent.co.uk](http://wardsof Kent.co.uk)**

- Legal advice should be taken to verify fixtures/fittings, planning, alterations and/or lease details
- Appliances & services are untested, dimensions are approximate and floor plans are not to scale
- Through a Homewise Home For Life Plan people aged 60+ can secure this property for up to 59% less, by purchasing a Lifetime Lease



12243329/20260121//HD