

Directions

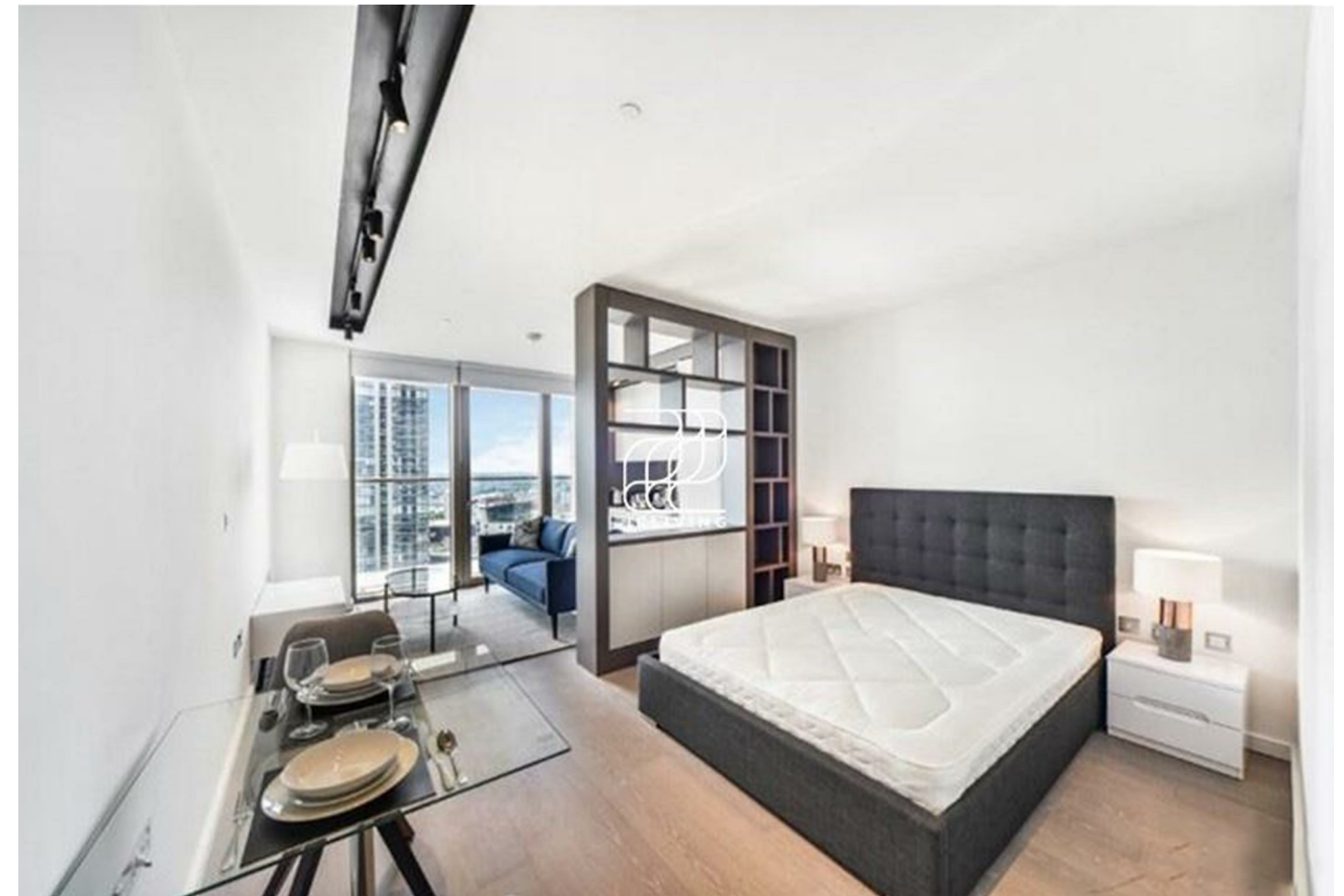
Viewings

Viewings by arrangement only. Call 02033696888 to make an appointment.

EPC Rating

B

Energy Efficiency Rating		
	Current	Potential
Very energy efficient - lower running costs		
(92 plus) A		
(81-91) B	82	82
(69-80) C		
(55-68) D		
(39-54) E		
(21-38) F		
(1-20) G		
Not energy efficient - higher running costs		
England & Wales	EU Directive 2002/91/EC	



£680 Per Week

1 Park Drive, LONDON E14 9GG

Please quote reference JC2309775 when contacting the office.

JCLiving is proud to present this stunning studio apartment at One park drive.

This high-floor studio features floor-to-ceiling windows that frame breathtaking panoramic views over South Dock and the London skyline. The open-plan living and sleeping area is intelligently designed to maximise space and light, with a fully fitted kitchen equipped with premium integrated appliances, a stylish bathroom, and ample built-in storage. A private balcony provides a tranquil outdoor retreat.

Residents enjoy world-class amenities including a 24-hour concierge, a 20-metre swimming pool, hydro pool, state-of-the-art gym, spa with sauna and steam room, private cinema with bar, residents' lounge, library, and landscaped gardens.

Superb connectivity: Canary Wharf Underground Station (Jubilee Line), Heron Quays DLR, and the Elizabeth Line are all within easy walking distance.



Council Tax Band: D

