



Connells

Severn Road
Hallen Bristol



Property Description

A well-presented three-bedroom home built in 2022, situated on the ever-popular Severn Road, Giving easy access to Westbury on Trym & Cribbs Causeway. This is a fantastic opportunity for families and first-time buyers alike.

The property is ideally located (and is in a small development of 9 similar homes) with convenient access to local amenities, schools and transport links, making it perfectly suited for modern day living.

The accommodation comprises an inviting entrance hall, a bright and spacious living room, and a well-appointed kitchen/dining area to the rear, providing an ideal space for both everyday living and entertaining. Upstairs, there are three well-proportioned bedrooms and a family bathroom, all maintained to a good standard throughout.

Externally, the property benefits from off-road parking for two cars to the front. To the rear, there is a pleasant garden enjoying an open outlook, offering a greater sense of privacy and a lovely space to relax or entertain.

Further benefits include its semi-detached position and well-kept condition, allowing any buyer to move straight in with minimal work required. Still under NHBC warranty.

Early viewing is highly recommended.

Entrance Hall

W/C

Living Room

17' 9" MAX x 12' 4" MAX (5.41m MAX x 3.76m MAX)

Kitchen

12' 6" MAX x 10' 1" MAX (3.81m MAX x 3.07m MAX)

Landing

Bedroom 1

14' 2" MAX x 10' 4" MAX (4.32m MAX x 3.15m MAX)

Bedroom 2

10' 10" MAX x 8' 5" MAX (3.30m MAX x 2.57m MAX)

Bedroom 3

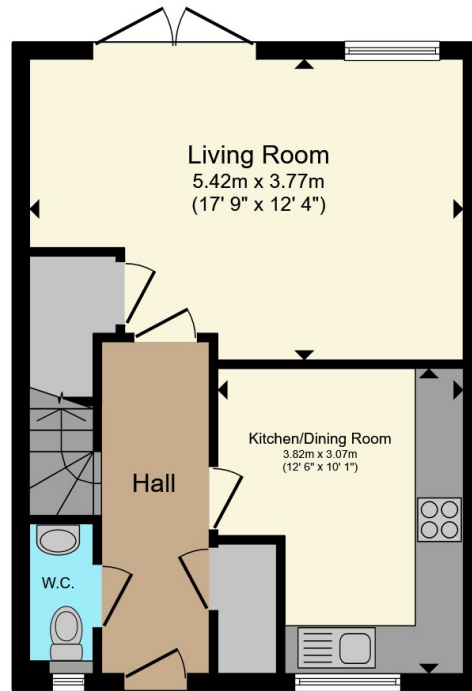
9' 2" x 8' 9" (2.79m x 2.67m)

Garden

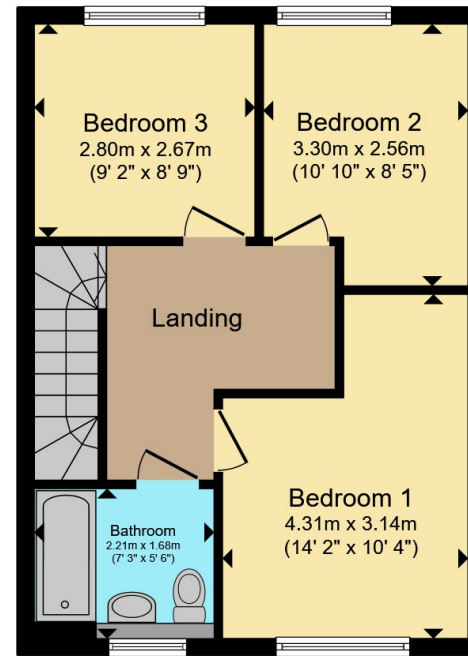








Ground Floor



First Floor

Total floor area 83.4 m² (897 sq.ft.) approx

This floor plan is for illustrative purposes only. It is not drawn to scale. Any measurements, floor areas (including any total floor area), openings and orientation are approximate. No details are guaranteed, they cannot be relied upon for any purpose and they do not form part of any agreement. No liability is taken for any error, omission or misstatement. A party must rely upon its own inspection(s). Powered by www.propertybox.io



To view this property please contact Connells on

T 0117 950 1552
E westburyontrym@connells.co.uk

6 Canford Lane
 BRISTOL BS9 3DH

EPC Rating: B Council Tax
 Band: C

Tenure: Freehold

view this property online connells.co.uk/Property/WOT309533



1. MONEY LAUNDERING REGULATIONS Intending purchasers will be asked to produce identification documentation at a later stage and we would ask for your co-operation in order that there will be no delay in agreeing the sale. 2. These particulars do not constitute part or all of an offer or contract. 3. The measurements indicated are supplied for guidance only and as such must be considered incorrect. Potential buyers are advised to recheck measurements before committing to any expense. 4. We have not tested any apparatus, equipment, fixtures, fittings or services and it is in the buyers interest to check the working condition of any appliances.

Connells Residential is registered in England and Wales under company number 1489613, Registered Office is Cumbria House, 16-20 Hockliffe Street, Leighton Buzzard, Bedfordshire, LU7 1GN. VAT Registration Number is 500 2481 05.

See all our properties at www.connells.co.uk | www.rightmove.co.uk | www.zoopla.co.uk

Property Ref: WOT309533 - 0004