



Guide Price
£525,000

Freehold

4x  2x  2x 

**Dunnock Drive,
Chattenden, Rochester,
Kent, ME3**

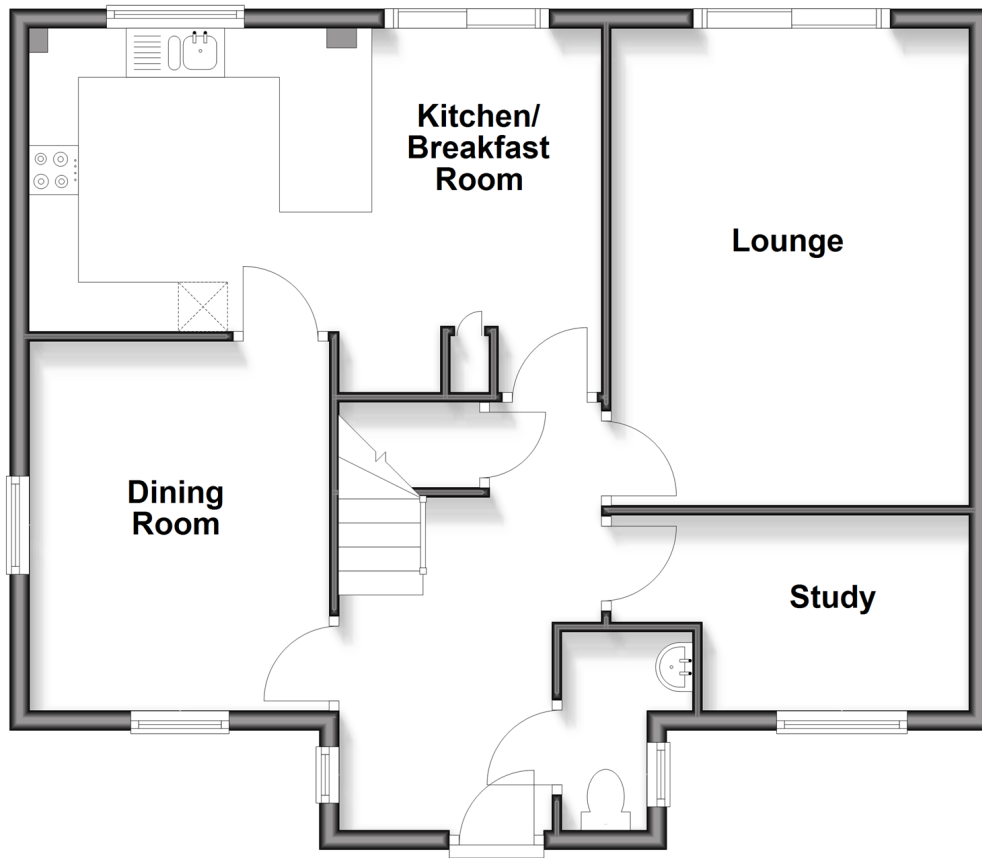
OVER 60?

Secure this property
for up to **59% less!**

Wards
Helping you move forwards

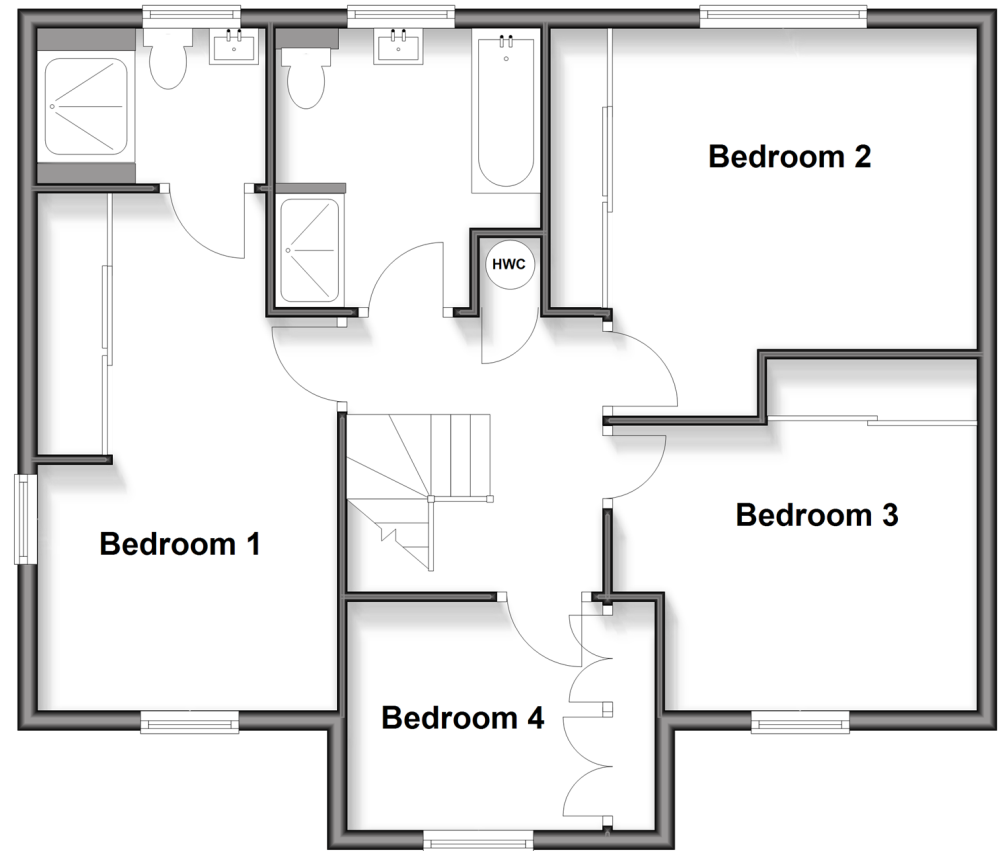
Ground Floor

Approx. 70.3 sq. metres (756.4 sq. feet)



First Floor

Approx. 70.3 sq. metres (756.4 sq. feet)



Accommodation

GROUND FLOOR

Entrance Hall : 11'2 x 7'3 (3.41m x 2.21m)
 Cloakroom
 Kitchen/Breakfast Room: 19'1 x 10'2 (5.82m x 3.10m)
 Dining Room : 12'4 x 10'0 (3.76m x 3.05m)
 Study : 12'2 x 6'7 (3.71m x 2.01m)
 Lounge : 16'1 x 12'0 (4.91m x 3.66m)

FIRST FLOOR

Landing
 Bedroom 1: 17'4 x 10'4 (5.29m x 3.15m)
 En-Suite Shower Room : 8'0 x 5'5 (2.44m x 1.65m)
 Bedroom 2: 12'4 x 10'10 (3.76m x 3.30m)
 Bedroom 3: 12'2 x 9'9 (3.71m x 2.97m)
 Bedroom 4: 8'7 x 6'10 (2.62m x 2.08m)
 Bathroom : 9'5 x 8'9 (2.87m x 2.67m)

OUTSIDE

Driveway
 Garage: 23'6 x 10'0 (7.17m x 3.05m)
 Front Garden
 Rear Garden



Main features

- **Fantastic family home being offered for sale with no onward chain**
- **19' kitchen/breakfast room, lounge, dining room and study**
- **Landscaped garden, covered barbecue area**
- **Driveway for several cars and a 23' garage**
- **Close to Chattenden Primary School and Hoo Academy**



Nearest Schools

Primary Schools: Chattenden Primary , Hoo St Werburgh Primary and Marlborough Centre , St Mary's Island C of E (Aided) Primary
Secondary Schools: The Hundred of Hoo Comprehensive School , King's School, Rochester, Brompton Academy



Transport Information

Train Stations: Strood 2.2 miles, Gillingham 2.4 miles, Rochester 2.6 miles



Address

Dunnock Drive, Chattenden, Rochester, Kent, ME3



Directions

For directions to this property please contact us.



Call Strood Branch 01634 716597 ■ wardsofkent.co.uk



■ Legal advice should be taken to verify fixtures/fittings, planning, alterations and/or lease details ■ Appliances & services are untested, dimensions are approximate and floor plans are not to scale
■ Through a Homewise Home For Life Plan people aged 60+ can secure this property for up to 59% less, by purchasing a Lifetime Lease



11846776/20260121/TS/JC