



Kingston Road, SW20

£360,000

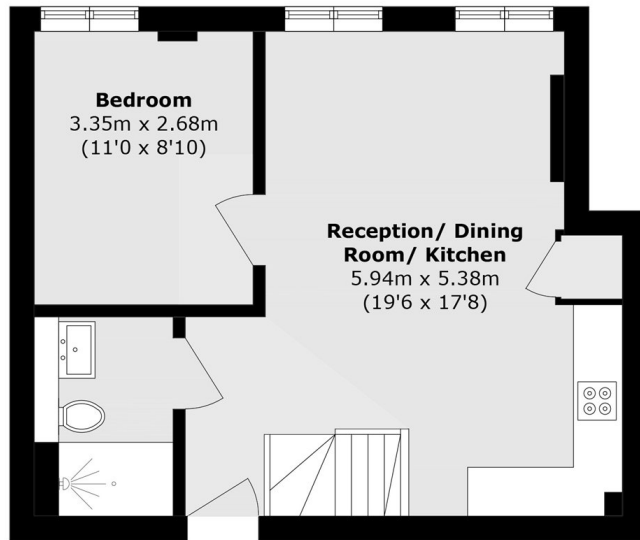
A modern one double bedroom, second floor apartment ideally located for access to Wimbledon Chase, Wimbledon Broadway and Raynes Park. The property is presented in immaculate condition throughout and further benefits from a mezzanine level.

Kingston Road is in a popular location conveniently located for Wimbledon Town Centre. It is close to the very popular Wimbledon Chase Primary School as well as the green open space of Dundonald Park

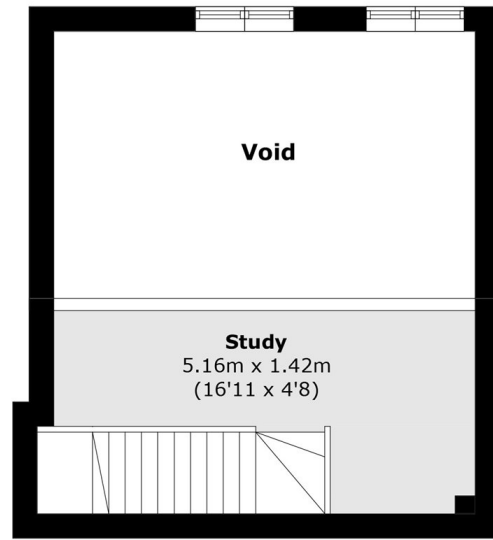
Features

- One Double Bedroom
- Second Floor Apartment
- Mezzanine Level
- High Specification Finish
- Modern Development
- Long Lease

Kingston Road, London, SW20



Second Floor



Third Floor

Total area (approx.): 54.0 sq. m (581.2 sq. ft)
(Excluding Void)