

## 10 Charles Clowes Walk London

A beautiful two bedroom, two bathroom apartment is in the The Residence development. The space features contemporary design throughout including quality appliances and spa like bathroom fittings.

Residents can enjoy the stunning communal amenities including onsite gym and 24 hour concierge service. The apartment is ideally located within the newly regenerated Nine Elms area with beneficial links to transport including Battersea, Vauxhall and the Nine Elms station.

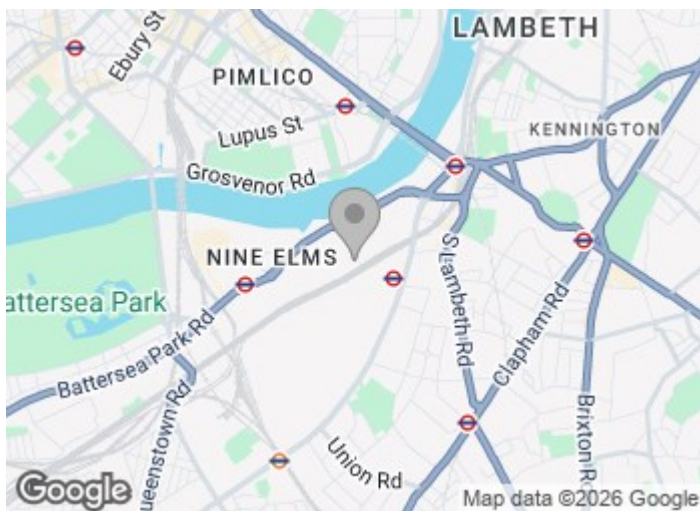
Change of contract fee: £50 including VAT

**£900 Per Week**

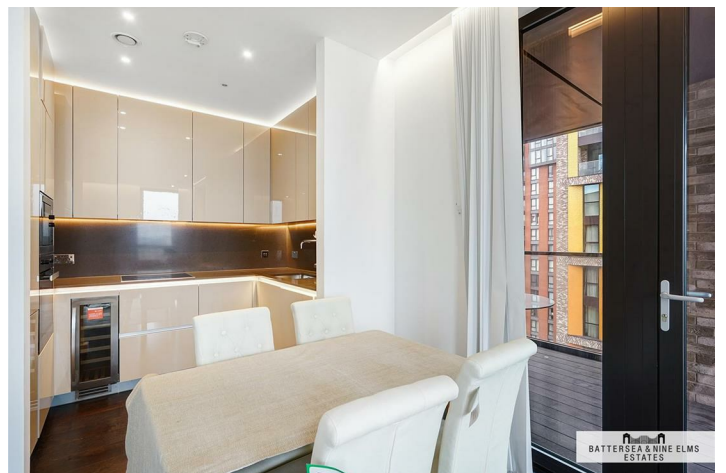
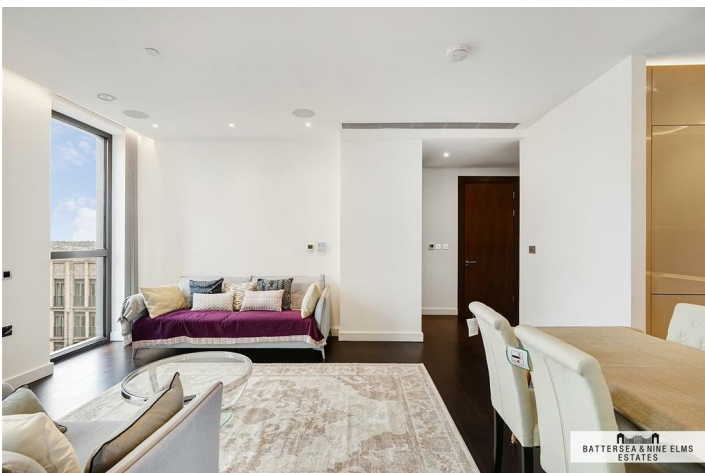
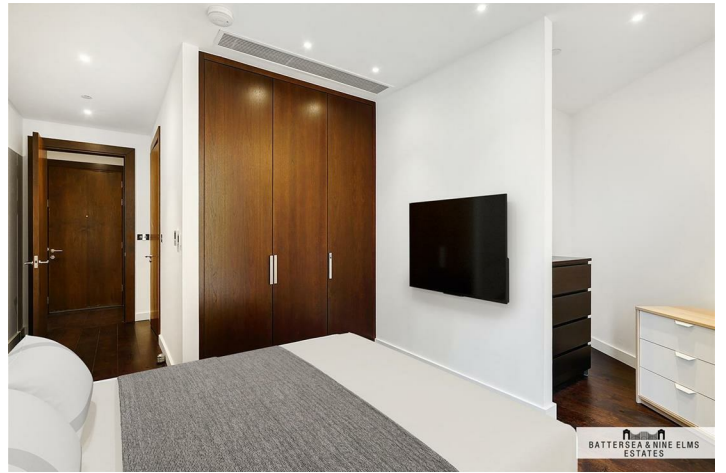
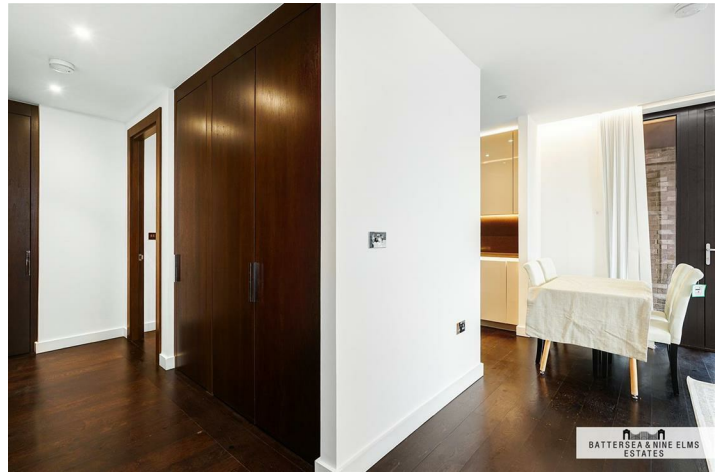
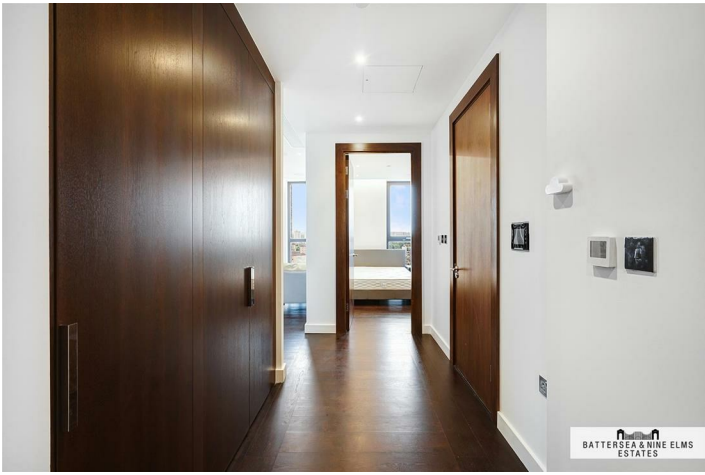
# 10 Charles Clowes Walk London



- 24 hour concierge
- Underfloor heating
- Residents gym
- 804 Sq ft Approx
- Excellent transport links



[Directions](#)



Haines House,  
Charles Clowes Walk, SW11  
Approximate Gross Internal Area  
74.7 sq m / 804 sq ft

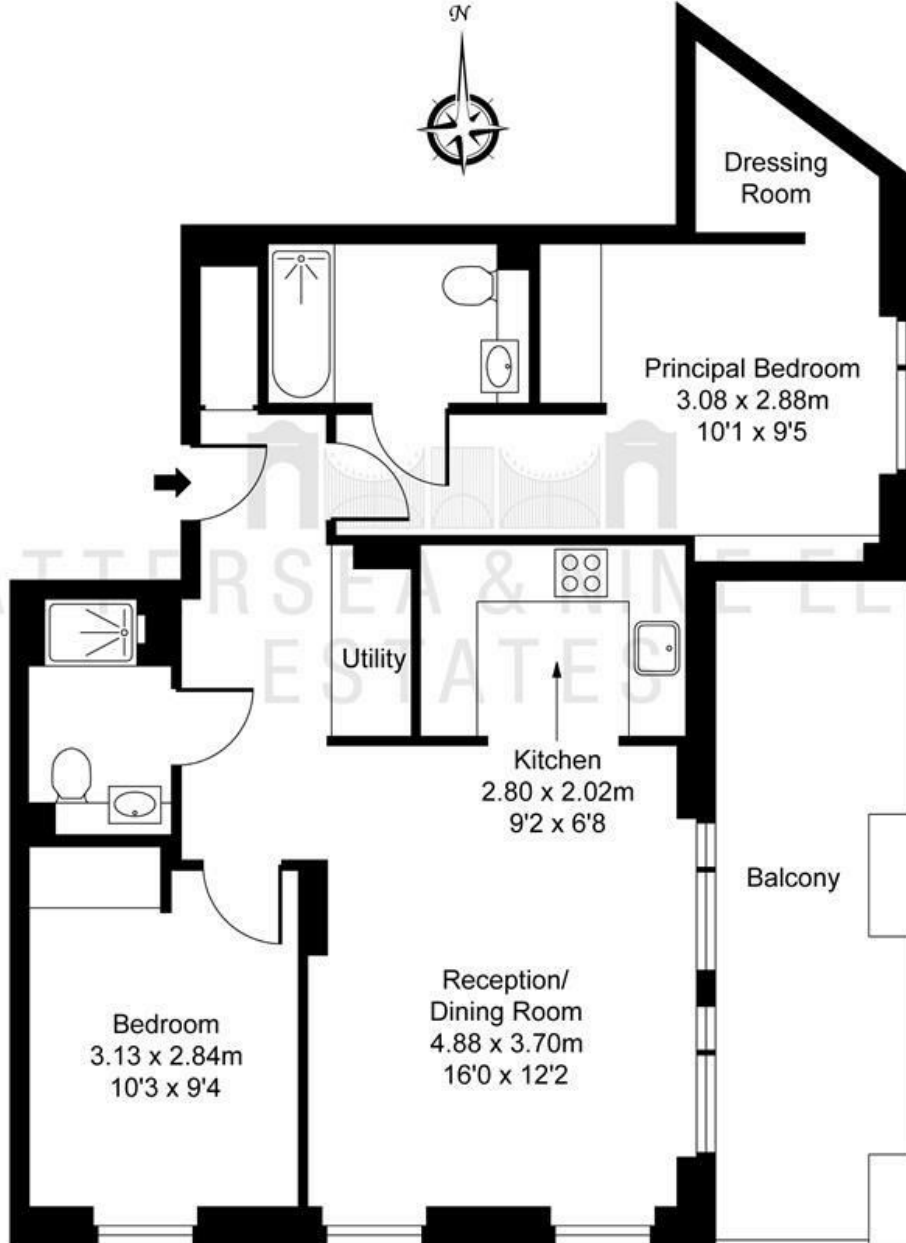


ILLUSTRATION FOR IDENTIFICATION PURPOSES ONLY  
ALL MEASUREMENTS AND AREA FIGURES SUPPLIED BY OTHERS. ACCURACY IS NOT GUARANTEED.  
THIS PLAN MUST NOT BE REPRODUCED BY ANY OTHER PERSON WITHOUT PERMISSION

These particulars, whilst believed to be accurate are set out as a general outline only for guidance and do not constitute any part of an offer or contract. Intending purchasers should not rely on them as statements of representation of fact, but must satisfy themselves by inspection or otherwise as to their accuracy. No person in this firm's employment has the authority to make or give any representation or warranty in respect of the property.

Energy Efficiency Rating	Current	Potential
Very energy efficient - lower running costs (92 plus) <b>A</b>		
(81-91) <b>B</b>		
(69-80) <b>C</b>		
(55-68) <b>D</b>		
(39-54) <b>E</b>		
(21-38) <b>F</b>		
(1-20) <b>G</b>		
Not energy efficient - higher running costs		
<b>England &amp; Wales</b>	EU Directive 2002/91/EC	

Environmental Impact (CO <sub>2</sub> ) Rating	Current	Potential
Very environmentally friendly - lower CO <sub>2</sub> emissions (92 plus) <b>A</b>		
(81-91) <b>B</b>		
(69-80) <b>C</b>		
(55-68) <b>D</b>		
(39-54) <b>E</b>		
(21-38) <b>F</b>		
(1-20) <b>G</b>		
Not environmentally friendly - higher CO <sub>2</sub> emissions		
<b>England &amp; Wales</b>	EU Directive 2002/91/EC	