



Elgin Avenue, W9

£1,300,000

A spacious split-level flat set in one of Maida Vale's iconic red-brick mansions. This stunning property features three double bedrooms, one of which comes with an en-suite, a bright reception room with access to a private balcony, a separate modern kitchen, top floor terrace and high ceilings throughout.

Biddulph Mansions is situated on charming, tree-lined Elgin Avenue, perfectly positioned just moments away from the open spaces and sports facilities of Paddington Recreation Ground. Additionally, it is close to a variety of different shops, cafés, and restaurants on Lauderdale Parade, as well as Maida Vale Underground station on the Bakerloo Line.

Features

- Red-Brick Mansion Block
- Split-Level Flat
- Private Balcony & Roof Terrace
- Additional Storage Room
- Spiral Staircase
- Share of Freehold

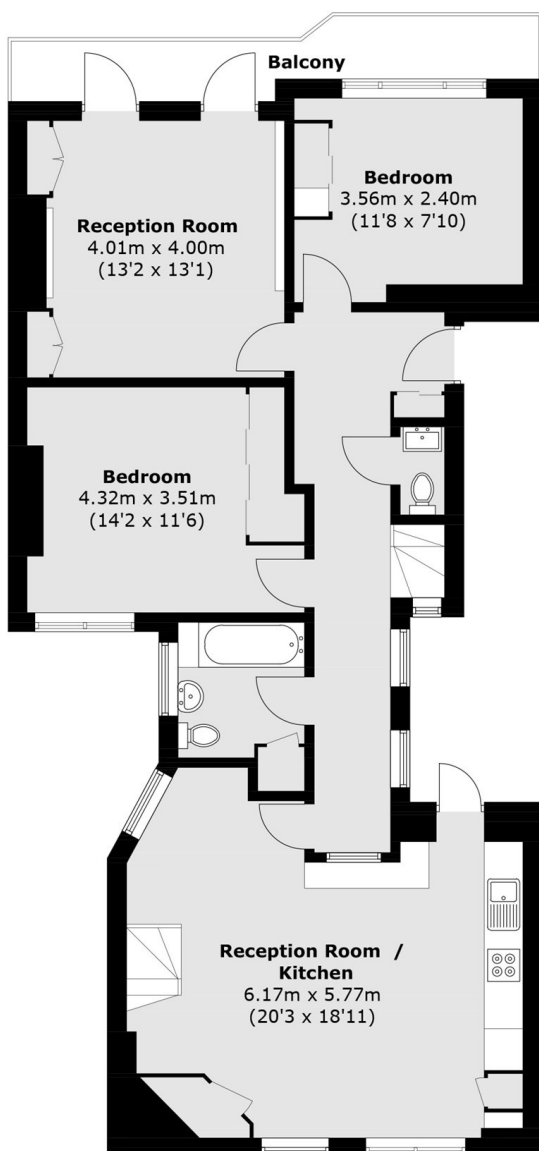


Elgin Avenue, W9

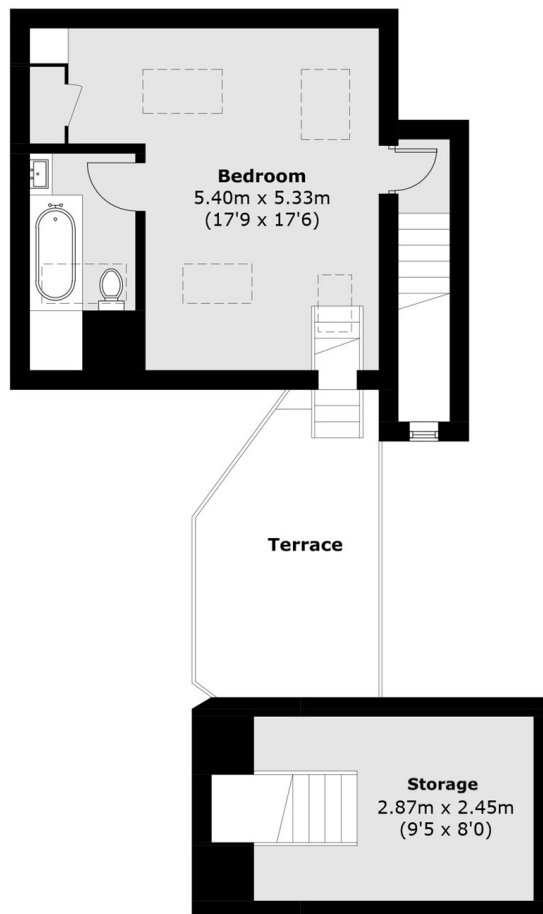
Set within a charming red-brick mansion block, this spacious split-level apartment offers over 1,480 sq ft of well-designed living. On the third floor, a generous entrance hall leads to a large open plan reception/kitchen, ideal for everyday living and entertaining. A second bright reception room opens onto a private balcony. This level also includes two double bedrooms, a family bathroom, and a guest WC. Upstairs, the principal bedroom suite provides excellent space, complete with an en suite. This floor also features a private terrace and a separate storage room, followed from the spiral staircase.



Elgin Avenue, Maida Vale, W9



Third Floor



Fourth Floor

Total area (approx.): 142.1 sq. m (1,529.5 sq. ft)
Balcony: 7.6 sq. m (81.8 sq. ft)
Terrace: 12.2 sq. m (131.3 sq. ft)