



St. Michaels Road | Rugeley | WS15 1ES

£190,000

 **Webbs**  
estate agents

## Summary

\*\* NO CHAIN \*\* IDEAL FOR FIRST TIME BUYERS \*\* TWO BEDROOMS \*\* LOUNGE DINING ROOM \*\* KITCHEN \*\* GOOD SIZE GARDEN \*\* DRIVEWAY FOR MULTIPLE VEHICLES \*\* POPULAR RESIDENTIAL LOCATION \*\* CLOSE TO AMENITIES \*\* VIEWING ADVISED \*\*

WEBBS ESTATE AGENTS are pleased to market this two bedroom semi detached home, located in a popular area of Brereton on St. Michaels Road. The property would be ideally suited to a first time buyer looking to get their foot on the property ladder. Located close to amenities, schools, useful transport links and a short distance to Cannock Chase. The internal accommodation briefly comprises; entrance hallway, lounge/ dining room, kitchen, two double bedrooms and a family bathroom. The property also benefits from a good size rear garden and driveway for multiple vehicles.

## Key Features

- NO CHAIN
- TWO BEDROOMS
- KITCHEN
- DRIVEWAY FOR MULTIPLE VEHICLES
- CLOSE TO AMENITIES
- IDEAL FOR FIRST TIME BUYERS
- LOUNGE DINING ROOM
- GOOD SIZE GARDEN
- POPULAR RESIDENTIAL LOCATION
- VIEWING ADVISED

## Rooms and Dimensions

### Hallway

### Living/ Dining Room

19'4 x 9'4 (5.89m x 2.84m)

### Kitchen

8'11 x 5'10 (2.72m x 1.78m)

### Conservatory

7'5 x 7'4 (2.26m x 2.24m)

### Landing

### Bedroom 1

9'2 x 13'11 (2.79m x 4.24m)

### Bedroom 2

9'10 x 10'4 (3.00m x 3.15m)

### Bathroom

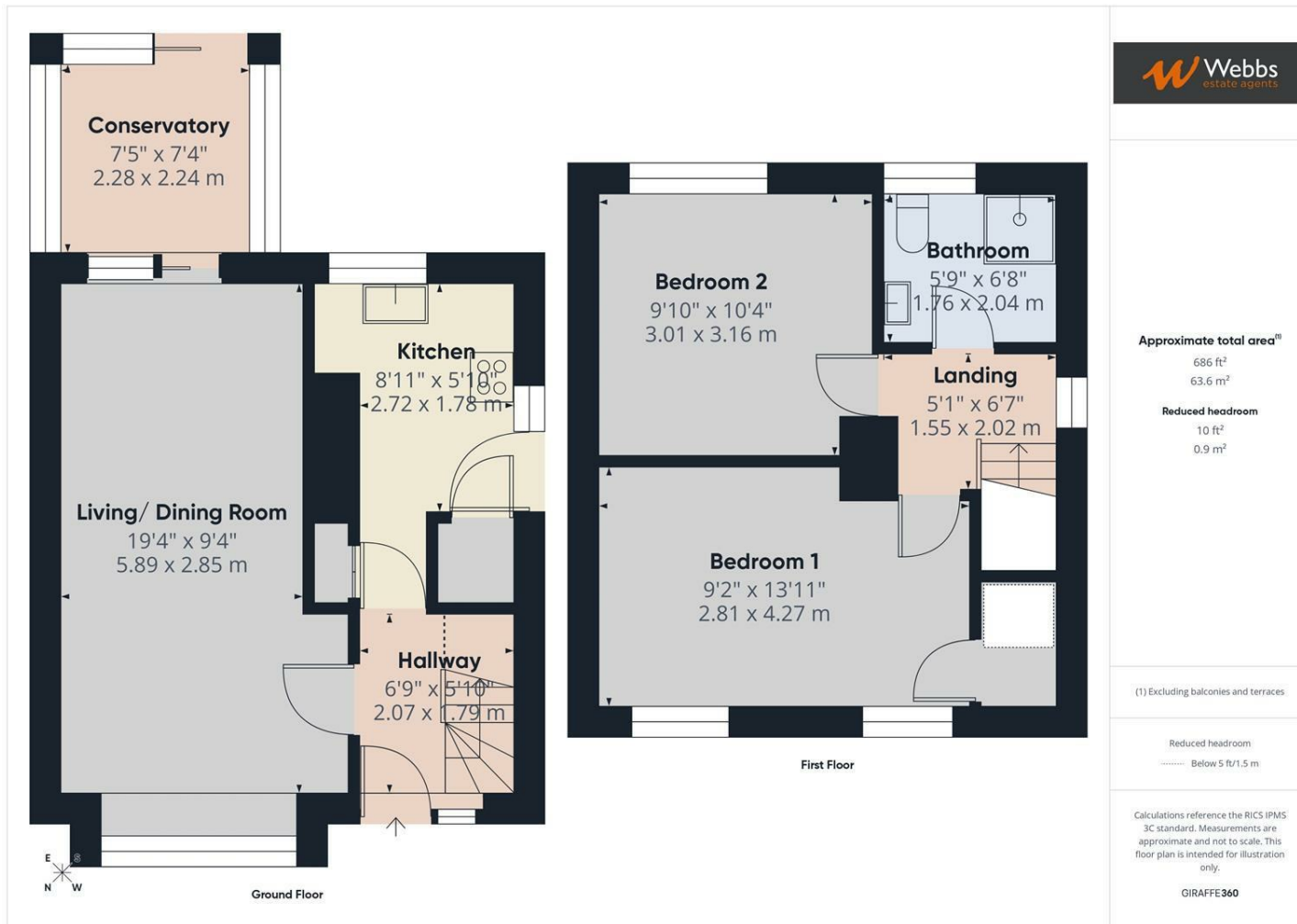
5'9 x 6'8 (1.75m x 2.03m)

### Rear Garden

### IDENTIFICATION CHECKS - C







Webbs Estate Agents - endeavour to maintain accurate depictions of properties in Virtual Tours, Floor Plans and descriptions, however, these are intended only as a guide and purchasers must satisfy themselves by personal inspection.

