



Amersham Road, SE14

£1,775 Per calendar month

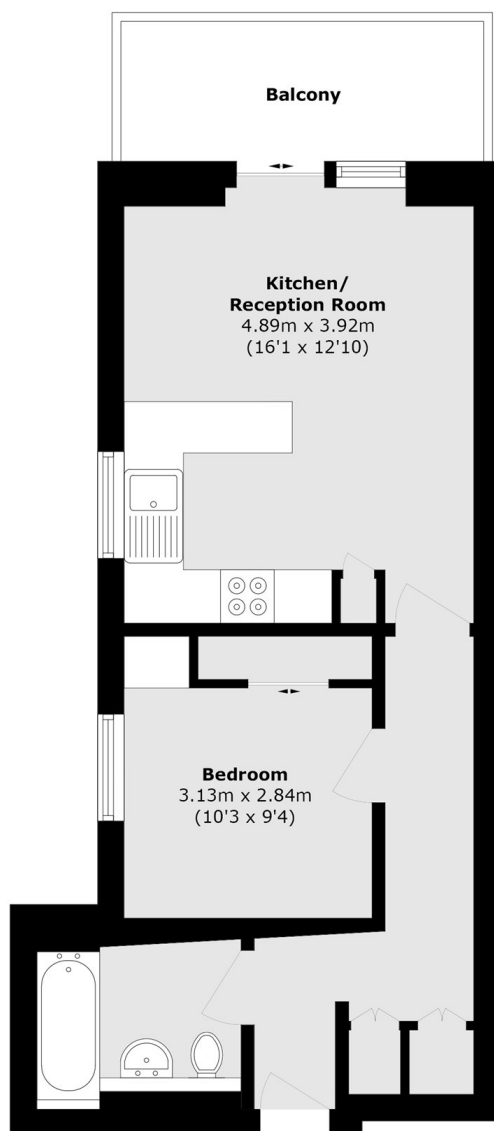
A one double bedroom Victorian conversion including an open plan living space, modern features throughout and a private balcony.

Amersham Road is within a short walk of New Cross railway which has regular services into London Bridge and Cannon St.

Features

Victorian Conversion
One Double Bedroom
Modern Features Throughout
Open Plan Living
Close To Station
Unfurnished

Amersham Road,
London, SE14



Total area (approx.): 42.2 sq. m (454.2 sq. ft)
Balcony area (approx.): 7.13 sq. m (76.7 sq. ft)