



## Rodenhurst Road, SW4

£2,250 Per calendar month

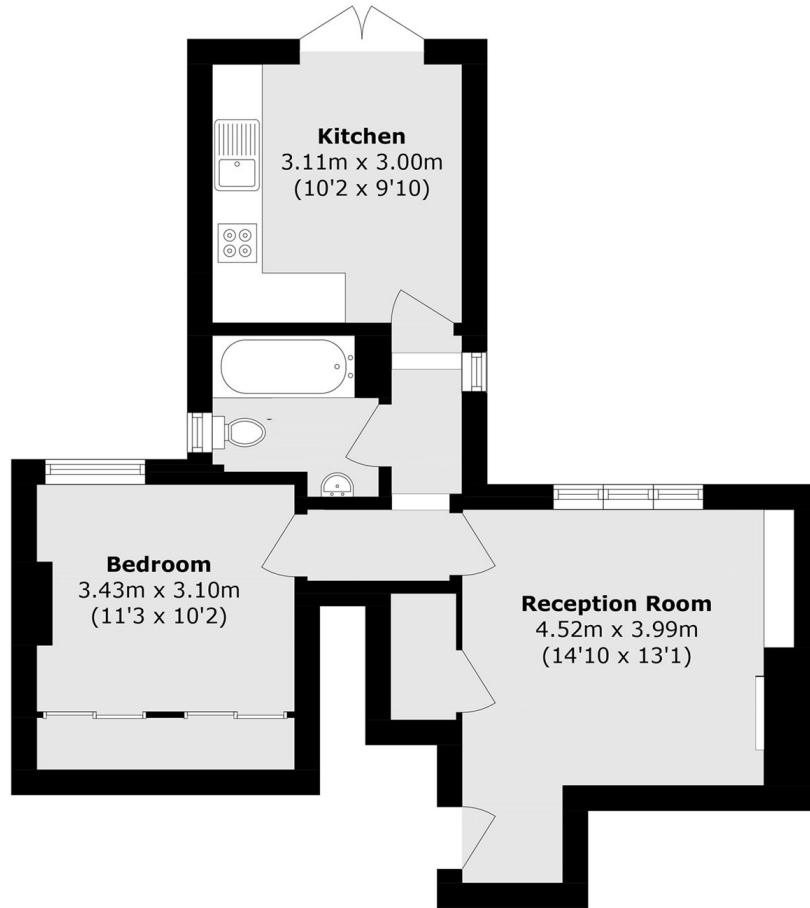
This well-presented one bedroom flat is situated on the top floor of a converted house. Offering a reception room, a separate eat-in kitchen, a double bedroom with built-in wardrobes with access to a communal garden.

One of Clapham's most desirable residential streets. You have Abbeville Road with its many boutique shops, restaurants and cafés, along with Clapham Common station close by.

### Features

- Top Floor Flat
- One Double Bedroom
- Eat-In Kitchen
- Built-In Storage
- Abbeville Village
- Communal Gardens

# Rodenhurst Road, London, SW4



Total area (approx.): 44.0 sq. m (473.6 sq. ft)