

# DAWSONS

Property Professionals since 1925

18/20 STAMFORD STREET STALYBRIDGE CHESHIRE TEL: 0161 338 2292

Website: [www.wcdawson.com](http://www.wcdawson.com) Email: [reception@wcdawson.com](mailto:reception@wcdawson.com)



## Saxon Avenue, Dukinfield, SK16 4TS

Dawsons are pleased to bring to market this two bedroom semi detached property situated in a popular and convenient residential location, the property sits within a good sized garden plot and offers excellent potential for those looking to impart their own taste and specification upon a property. \* No vendor chain \*

All local amenities are within easy reach making the property ideally suited to family accommodation. The shops along nearby Concorde Way and Morrisons are within close proximity. Several local junior and high schools are also within easy reach and there are good public transport links to the neighbouring towns and Manchester City Centre.

**Offers Over £175,000**



**CHARTERED SURVEYORS, ESTATE AGENTS  
& PROPERTY MANAGEMENT SPECIALISTS**



# Saxon Avenue, Dukinfield, SK16 4TS

- No onward chain
- 2 bedroom semi detached
- Family bathroom and downstairs shower room
- Good access to all local amenities
- White bathroom suite
- Popular residential area

## GROUND FLOOR

### Entrance hallway

uPVC windows, uPVC front door, gas central heating radiator, stairs to first floor, doors leading to:

### Reception Room

12' x 14' (3.66m x 4.27m)

uPVC double glazed windows, gas central heating radiator, under stair storage cupboard.

### Kitchen

12' x 13 (3.66m x 3.96m)

uPVC double glazed windows, uPVC back door, a range of wall and floor mounted units, built-in stainless-steel oven, four-ring gas-hob with filter unit over, plumbing for automatic washing machine, part tiled, gas central heating radiator, space for dining table.

### Shower room

5' x 6' (1.52m x 1.83m)

uPVC double glazed window, gas central heating radiator with towel rail

over, Modern white suite having shower cubicle, low level W/C, wash hand basin, part tiled

## FIRST FLOOR

### Landing

Storage cupboard, doors leading to:

### Bedroom 1

39'4" x 42'7" (12' x 13')

uPVC double glazed windows, gas central heating radiator.

### Bedroom 2

12' x 8' (3.66m x 2.44m )

uPVC double glazed window, gas central heating radiator.

### Bathroom

6' x 12' (1.83m x 3.66m )

uPVC double glazed window, gas central heating radiator, white suite having panel bath, wash hand basin, low level WC, part tiled, storage cupboard.

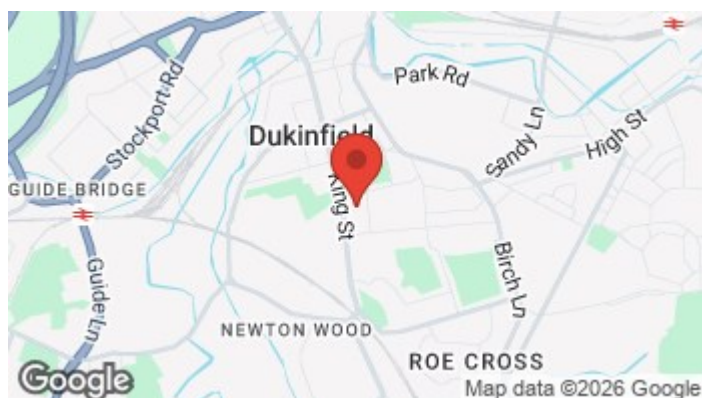
## Externally

Large paved garden with artificial grass and shed, Front access through the side of the house.

## AML Checks & Proof of Funds

We are required by law to conduct Anti Money Laundering (AML) and ID checks for all vendors and purchasers. A non refundable fee of £30 per check will be payable to cover this digital process. These checks are carried out by Thirdfort.

This is a legal requirement to meet HMRC and UK law guidelines .

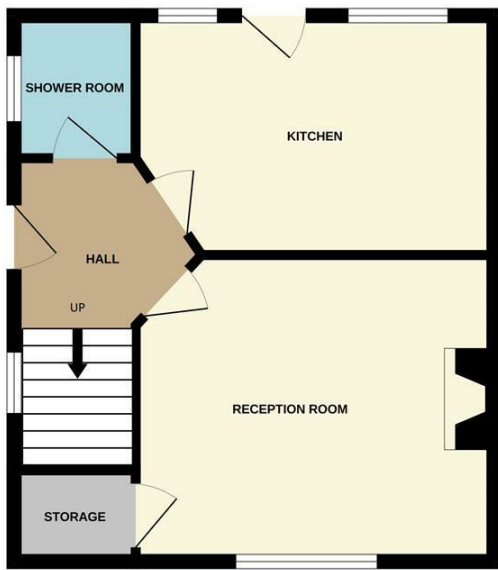


## Directions

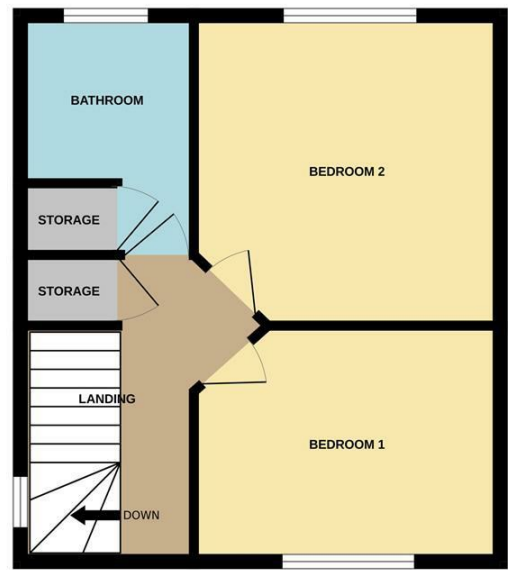


# Floor Plan

GROUND FLOOR



1ST FLOOR



Whilst every attempt has been made to ensure the accuracy of the floorplan contained here, measurements of doors, windows, rooms and any other items are approximate and no responsibility is taken for any error, omission or mis-statement. This plan is for illustrative purposes only and should be used as such by any prospective purchaser. The services, systems and appliances shown have not been tested and no guarantee as to their operability or efficiency can be given.  
Made with Metropix ©2025

These particulars, whilst believed to be accurate are set out as a general outline only for guidance and do not constitute any part of an offer or contract. Intending purchasers should not rely on them as statements of representation of fact, but must satisfy themselves by inspection or otherwise as to their accuracy. No person in this firm's employment has the authority to make or give any representation or warranty in respect of the property.

