



21 Claremont Drive, Aughton

Ormskirk

Offers Over £385,000

21 Claremont Drive

Aughton, Ormskirk

Elegant Four-Bedroom Linked Detached Home on Claremont Drive, Ormskirk. Tucked away at the end of a peaceful cul-de-sac on the well-established Claremont Drive in Ormskirk, this attractive four-bedroom linked detached home offers spacious, versatile living perfectly suited to modern family life. Beautifully bright throughout and enjoying a private rear aspect, the property combines comfort, practicality, and a highly desirable location.

Council Tax band: D

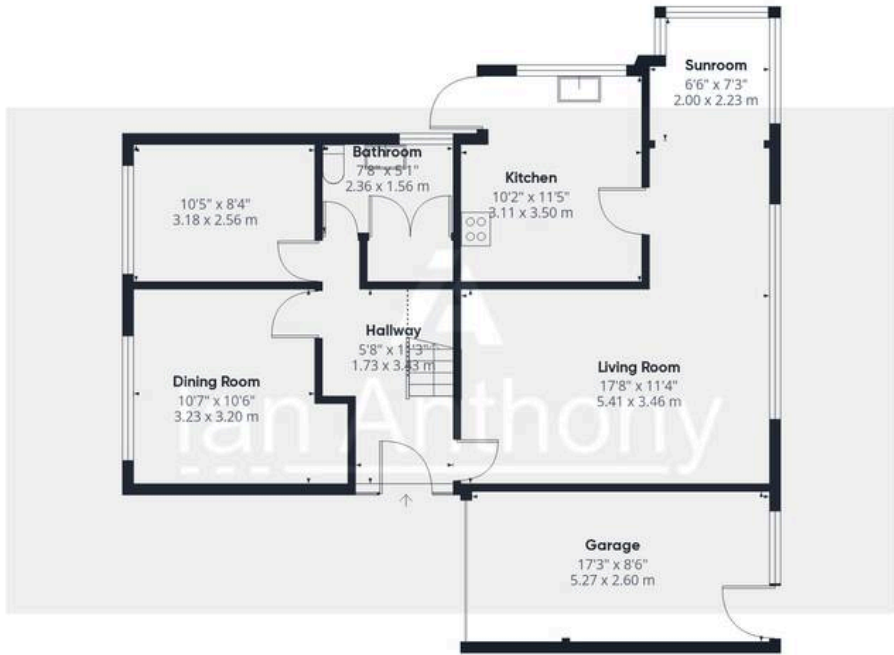
Tenure: Freehold

EPC Energy Efficiency Rating: D

EPC Environmental Impact Rating: D







Ground Floor



Floor 1



Approximate total area⁽¹⁾

1325 ft²
123 m²

Reduced headroom

26 ft²
2.5 m²

(1) Excluding balconies and terraces

Reduced headroom

----- Below 5 ft/1.5 m

Calculations reference the RICS IPMS 3C standard. Measurements are approximate and not to scale. This floor plan is intended for illustration only.

GIRAFFE360



IAN ANTHONY

5 Burscough Street, Ormskirk - L39 2EG

01695580888

enquiries@iananthonyestates.co.uk

iananthonyestates.co.uk/

