



**Guide Price**  
**£340,000**

**Freehold**

2x  1x  1x 

**Royal Walk, Ryde, Isle  
of Wight, PO33**

**OVER 60?**

Secure this property  
for up to **59% less!**

**Pittis**   
Helping you move forwards



## Main features

- Beautifully presented link detached bungalow
- Offered with no onward chain and ready to move straight into
- Bright spacious conservatory
- Set on the outskirts of Ryde with park and beach walks on your doorstep
- Quiet cul-de-sac location

## Accommodation

### GROUND FLOOR

Entrance Hallway

Kitchen: 11'6 x 11'0 (3.51m x 3.36m)

Bedroom 2: 12'7 x 10'6 (3.84m x 3.20m)

Shower Room: 8'0 x 5'5 (2.44m x 1.65m)

Bedroom 1: 10'11 x 10'4 (3.33m x 3.15m)

En-Suite Cloakroom

Lounge: 15'10 x 13'8 (4.83m x 4.17m)

Conservatory: 14'8 x 14'0 (4.47m x 4.27m)

### OUTSIDE

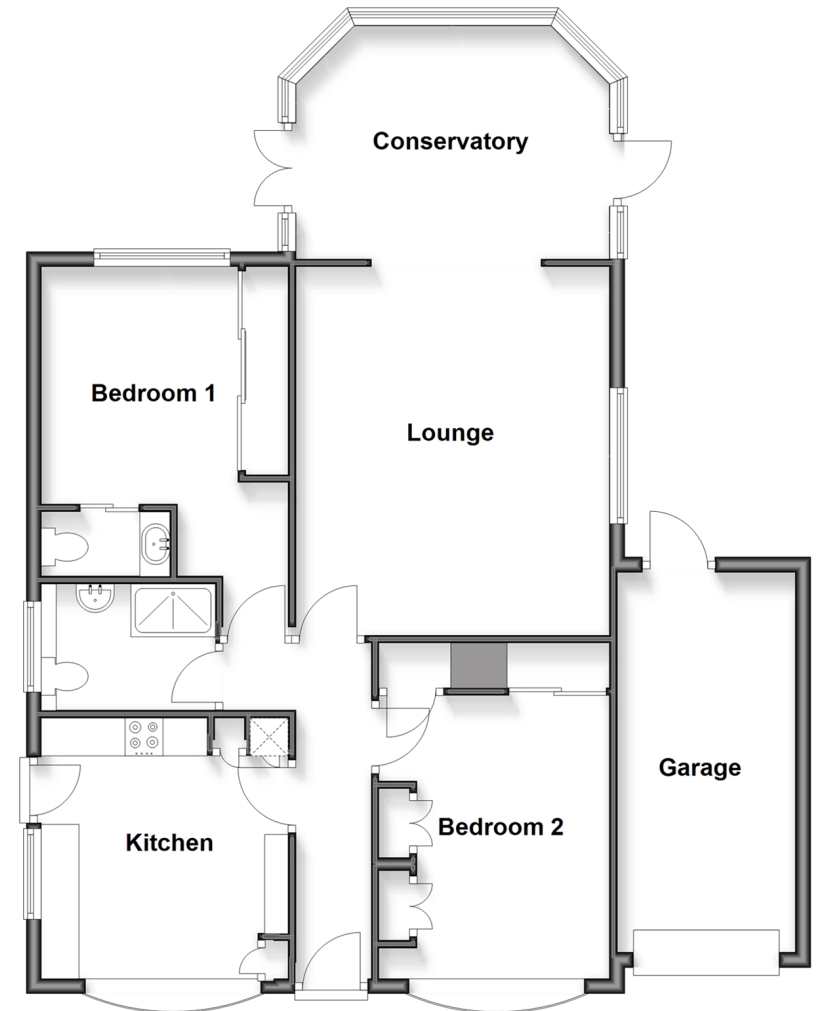
Front Garden

Driveway Parking

Garage: 17'2 x 7'11 (5.24m x 2.41m)

Rear Garden

**Ground Floor**  
Approx. 96.3 sq. metres (1036.1 sq. feet)



**Call Ryde - 01983 564646 ■ pittis.co.uk**

■ Through a Homewise Home For Life Plan people aged 60+ can secure this property for up to 59% less, by purchasing a Lifetime Lease



60426996/20260411/DN/AGAN