

**GRICE &  
HUNTER**

Chartered Surveyors  
Estate Agents & Valuers  
Est 1924



## 92 Windsor Road, Crowle, DN17 4EF

- A highly impressive Semi-Detached House • 2 Double Bedrooms • Spacious Dining Kitchen •
- Attractive Lounge • Ground floor Cloaks • Superb Bathroom • Gas Central Heating •
- PVCu Double Glazing • Double width driveway • Beautifully presented throughout •
- Convenient for central Crowle • **MUST BE VIEWED** •



**£229,950**

Energy rating

**B**

One of a unique pair of semi-detached properties offering very good sized accommodation presented to a first class standard throughout. The most tastefully appointed living space includes:

- Main Reception Hall with Cloakroom
- Generous Living Room with stylish media fireplace
- Dining Kitchen with extensive integrated appliances
- Rear entrance with access to garden
- 2 Double Bedrooms with fitted wardrobes
- Spacious bathroom including shower
- Low maintenance gardens

**Accommodation** (room sizes approx. only)

### Ground Floor

**ENTRANCE HALL** with composite exterior doors, radiator and tiled flooring.

**CLOAKROOM** (2.0m x 0.9m) with toilet, wash basin, radiator and tiled flooring.

**LOUNGE** (4.60m x 4.12m) with front facing bay window, radiator and impressive Evonic media wall electric fire.

**DINING KITCHEN** (4.95m x 2.75m) stylish grey units with contrasting worktops, integrated double oven, 4 ring gas hob with extractor over, dishwasher, fridge/freezer and washing machine. Base and wall cabinets including 1 ½ bowl sink, vertical radiator and tiled flooring.

**REAR ENTRANCE HALL** with composite exterior door, radiator, understairs storage cupboard and tiled flooring.

### First Floor

**LANDING** with radiator and access to eaves storage space.

**BEDROOM 1** (3.45m x 2.76m) with radiator and fitted double wardrobe.

**BEDROOM 2** (3.45m x 2.75m) with radiator and double fitted wardrobe.

**BATHROOM** (2.85m x 2.0m) fully tiled to walls and floor, suite comprising toilet, cabinet wash basin and shower cubicle, towel radiator, extractor fan and roof lights.

### OUTSIDE

The house occupies a low maintenance corner plot with double width driveway entrance and parking off Windsor Road.

The enclosed rear garden is designed for easy maintenance being fully paved and ideal for outside dining. Steps lead to the main entrance and also to a secondary seating area next to the rear entrance door.

### SERVICES (not tested)

- All mains services.
- Gas central heating to radiators.

### LOCAL AUTHORITY

North Lincolnshire Council

**COUNCIL TAX** Band 'B' (on-line enquiry)

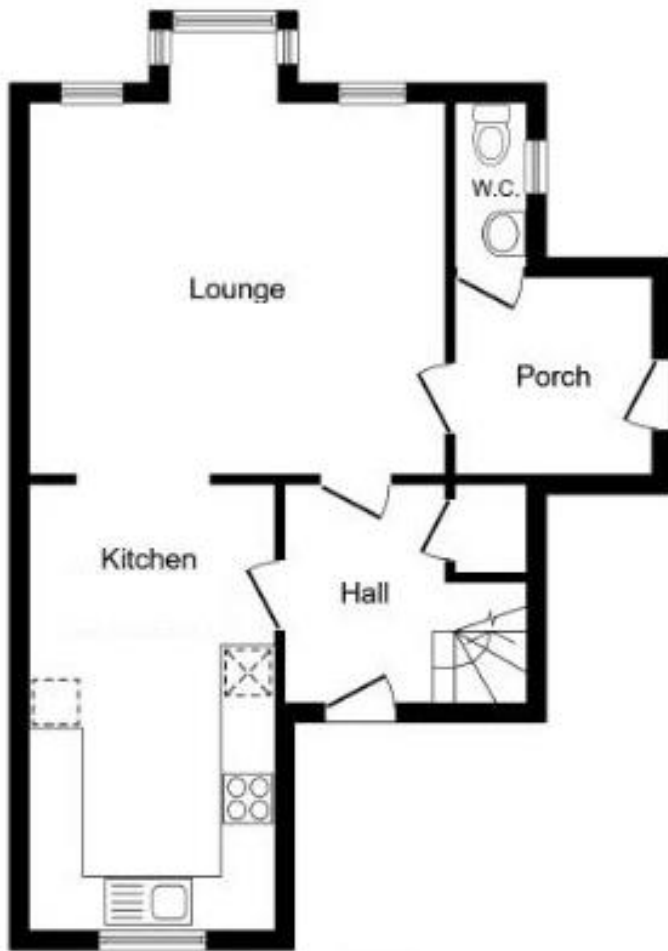
**TENURE** Freehold.

### VIEWING

Strictly by prior appointment through Grice & Hunter 01427 873684

Score	Energy rating	Current	Potential
92+	A		95 A
81-91	B	84 B	
69-80	C		
55-68	D		
39-54	E		
21-38	F		
1-20	G		





**Ground Floor**



**First Floor**

23 High Street, Epworth,  
Near Doncaster DN9 1EP  
Tel: (01427) 873684  
epworth@gricehunter.co.uk

7 Priory Place,  
Doncaster DN1 1BL  
Tel: (01302) 360141  
doncaster@gricehunter.co.uk

**Consumer Protection Regulations**

1. The mention of any appliances and/or services within these Sales Particulars does not imply they are in full and efficient working order
2. All measurements, areas and distances are approximate only. Plans are for illustration purposes only and not to be used for Land Registry purposes.
3. Extracts from the Ordnance Survey are for identification purposes only and the surroundings may have changed. The plan may not be an accurate reflection of the actual boundaries and must not be used to depict legal boundaries.
4. Details regarding the Council Tax and Planning Permissions have been obtained by online or oral enquiry and we advise any interested parties to satisfy themselves with the relevant Local Authority.

**Misrepresentation**

Grice & Hunter give notice that these particulars are believed to be correct but their accuracy cannot be guaranteed and they do not constitute part of an offer or contract. Intending purchasers or tenants should not rely on them as statements or representations of fact, but must satisfy themselves by inspection or otherwise as to their accuracy. No person in employment of Grice & Hunter has authority to make or give any representation or warranty in relation to the property.