



## COVERDALE ROAD, NW2

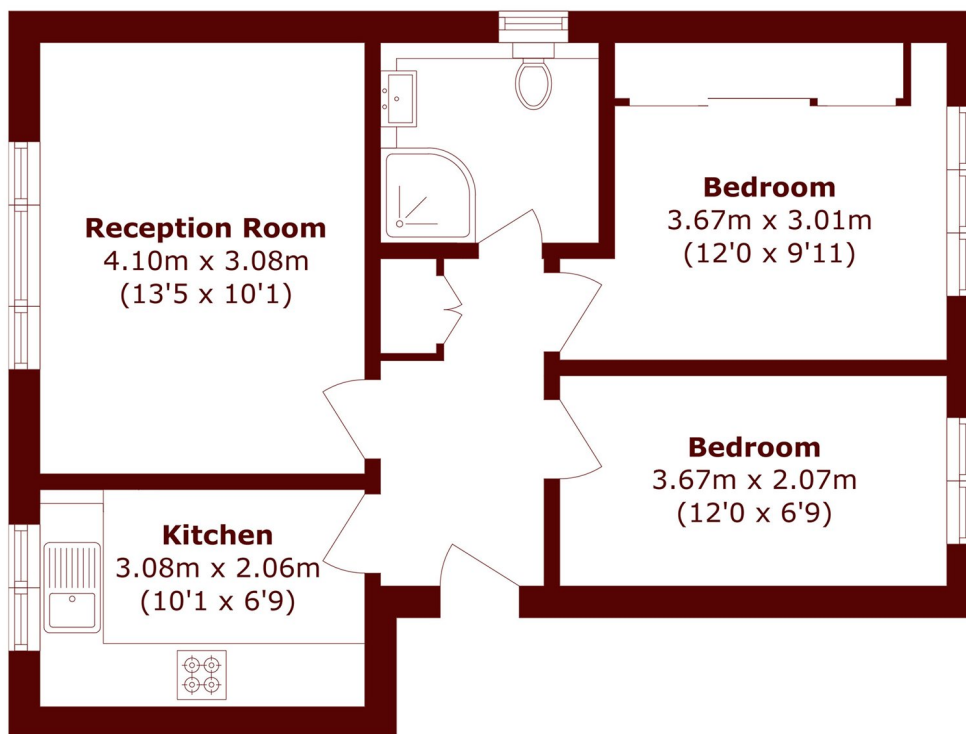
£475,000

This two bedroom flat offers ample living space with modern decor, communal gardens, off street parking and a great location close to amenities and Willesden Station.

Two Bedroom  
Top Floor  
Off Street Parking

Communal Gardens  
Willesden Tube Close  
Large Reception Room

# STEP INSIDE COVERDALE ROAD



Total area (approx.): 50.0 sq. m (538.2 sq. ft)

Willesden Green  
020 8451 0420

Energy Rating: C We aim to make our particulars both accurate and reliable. However, they are not guaranteed; nor do they form part of an offer or contract. If you require clarification on any points then please contact us, especially if you're traveling some distance to view. Please note that appliances and heating systems have not been tested and therefore no warranties can be given as to their good working order

MARSH &  
PARSONS