



Barlborough Street, SE14

£325,000

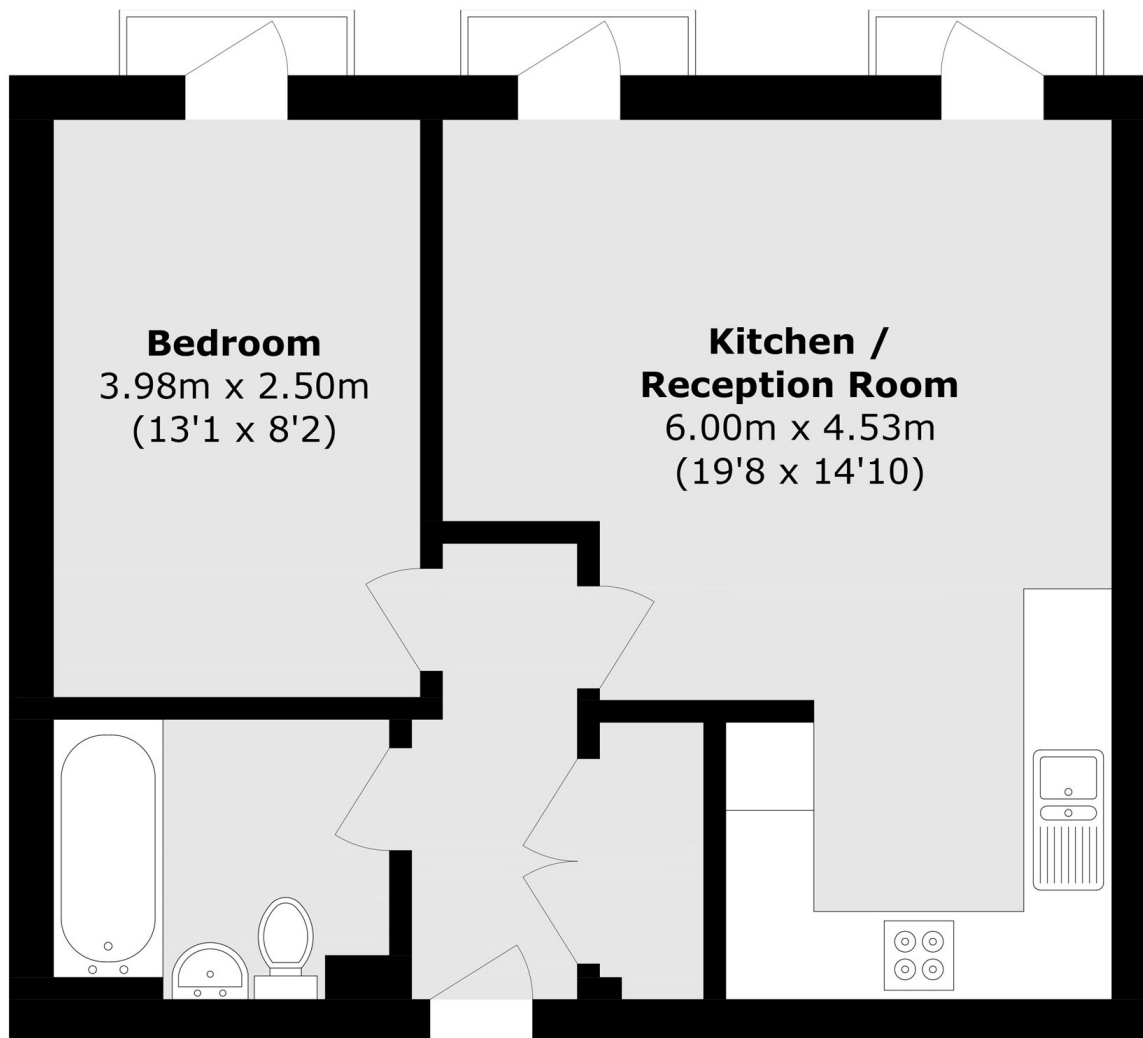
This well-presented one-bedroom open-plan apartment is ideally located for easy access to New Cross Gate Rail and Overground Station.

Barlborough Street is located to the edge of Hatcham Conservation area, and is close to New Cross Gate and Queens Road Peckham stations, with access to central London within minutes. If socialising is what you want, there are numerous cafe's and bars in nearby Peckham.

Features

- One Double Bedroom
- Modern Built
- Open Plan Living Room
- Hatcham Conservation Area

Barlborough Street, London, SE14



Total area (approx.): 43.2 sq. m (465.0 sq. ft)