



Guide Price
£600,000

Freehold

4x  2x  2x 

**Westmead Drive,
Salfords, Surrey, RH1**

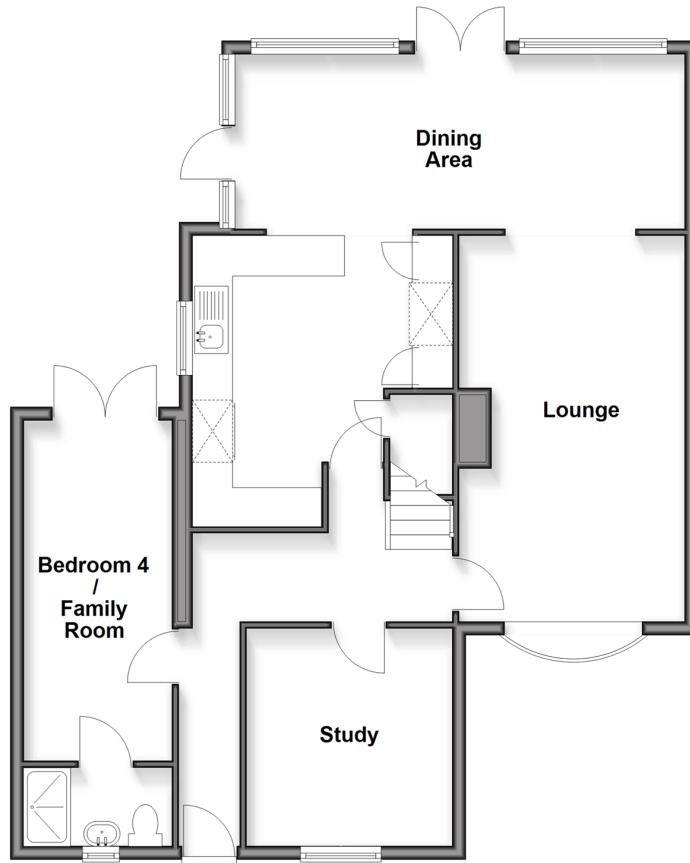
OVER 60?

Secure this property
for up to **59% less!**

cubitt & west
Helping you move forwards

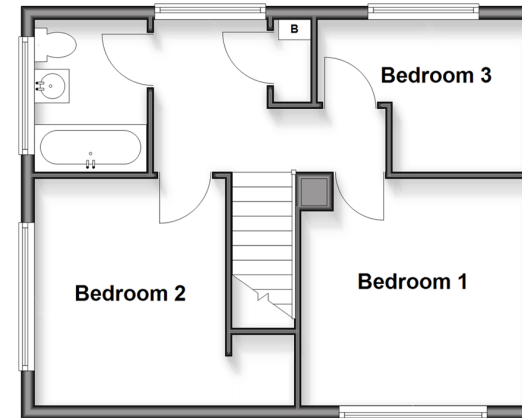
Ground Floor

Approx. 88.3 sq. metres (950.2 sq. feet)



First Floor

Approx. 42.0 sq. metres (451.7 sq. feet)



Accommodation

GROUND FLOOR

Entrance Hallway

Dining Area: 22'6 x 9'2 (6.86m x 2.80m)

Kitchen: 14'0 x 12'0 (4.27m x 3.66m)

Lounge: 18'5 x 10'9 (5.62m x 3.28m)

Study: 10'1 x 10'0 (3.08m x 3.05m)

Family Room & En Suite : 16'2 x 7'2 (4.93m x 2.19m)

FIRST FLOOR

Landing

Bedroom 1: 11'9 x 11'0 (3.58m x 3.36m)

Bedroom 2: 11'3 x 10'1 (3.43m x 3.08m)

Bedroom 3: 8'8 x 7'3 (2.64m x 2.21m)

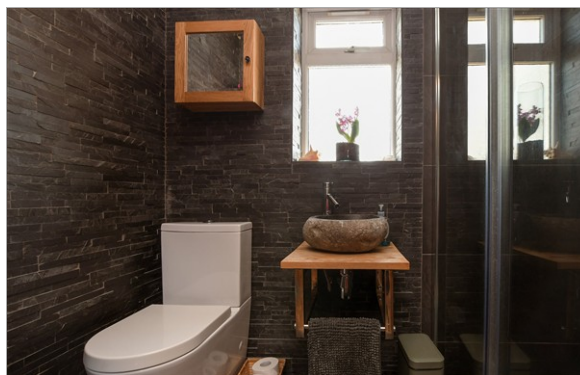
Bathroom

OUTSIDE

Driveway for 4 vehicles

Large Rear Garden

Bar



Main features

- Large Rear Garden
- Large Driveway for 4 cars
- Close to train station - walking distance
- Open plan kitchen and dining area to the rear of the property, full of natural light
- Study at front of property with a spacious utility area that can be a bedroom 4 (with En suite)

Nearest Schools

Primary Schools: Salfords Primary 0.4 miles, Meath Green Junior School 1.3 miles, Brambletye Junior School 1.8 miles

Secondary Schools: Cornfield School 0.9 miles

Transport Information

Train Stations: Salfords 0.1 miles, Earlswood 1.8 miles, Nutfield 2.1 miles

Address

Westmead Drive, Salfords, Surrey, RH1

Directions

For directions to this property please contact us.



cubitt&west
Helping you move forwards

Call Horley Branch 01293 785338 ■ cubittandwest.co.uk



■ Through a Homewise Home For Life Plan people aged 60+ can secure this property for up to 59% less, by purchasing a Lifetime Lease



20820825/20260404/TP/SJ