

Parkheath

Sold on Service

Ashburnham Road NW10

£7,000 PCM (£1,615 per week) - Brent Band E



Stunning five-bedroom family home

Beautifully modernised, extended and arranged over three floors

27' reception room with library wall feature

Four double bedrooms plus home office

Excellent Kensal Rise location near transport and amenities

West Hampstead Office 020 7794 7111

Approximately 2,100 sq ft of accommodation

Superb kitchen/dining room with skylights and bi-fold doors

Utility room and guest WC

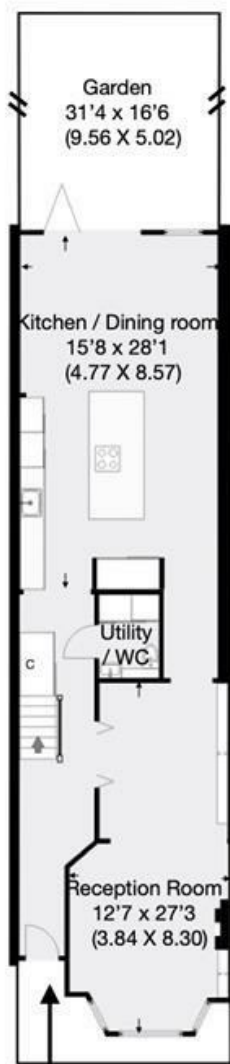
Luxury bathroom and en suite shower room

EPC: Rating C, Council Tax: Brent band E

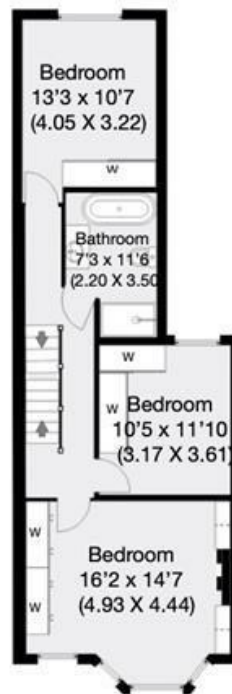


Ashburnham Road, London, NW10

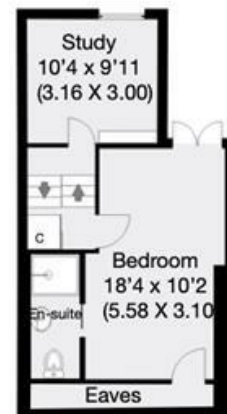
Approximate Gross Internal Area 195 sqm / 2100 sqft



Ground Floor



First Floor



Second Floor

THIS FLOOR PLAN IS PRODUCED FOR PARKHEATH SUBMITTED BY ARCHIMEDIA web: www.archi-media.co.uk

Whilst every attempt has been made to ensure the accuracy of the floor plan contained here, measurements of doors, windows and rooms are approximate and no responsibility is taken for any error, omission or misstatement. These plans are for representation purposes only and should be used as such by any prospective buyer or lease. Specifically no guarantee is given on the gross internal floor area of the property if quoted on this plan and any figures given is initial guidance only and should be treated as such.

The particulars do not constitute part of an offer or contract. The particulars, including text, photographs and plans, are for the guidance only of prospective purchasers/tenants and must not be relied upon as statements of fact. The descriptions provided therein represent the opinion of the author and whilst given in good faith should not be construed as statements of fact. Nothing in these particulars shall be deemed a statement that the property is in good condition or otherwise or that any services or facilities are in good working order. All measurements are approximate