



**Connells**

Siskin Close  
Corby



## Property Description

This three bedroom town house is perfectly situated in the highly sought after Oakley Vale area of Corby. With many local amenities surrounding including well regarded primary and secondary schools, local shops, play parks and easy access to Corby Town Centre, this property is the perfect family home.

The ground floor offers a modern style kitchen to the front with integrated oven and hob and space for a dining area. the lounge is to the rear of the property, boasting generous space and with the French patio doors leading to the rear garden allows the room to be flooded with natural light as well as allowing the outdoors in. The cloakroom is conveniently placed, perfect for busy family homes.

The first floor offers the first two bedrooms. The double bedroom is to the rear with the single bedroom to the front and the family bathroom situated between the two rooms. The master bedroom is located on the second floor and boasts its own ensuite.

Externally, this property offers a fully enclosed rear garden which is ideal for young children and pets or to enjoy those long summer evenings as a family. The property also boasts off street parking for multiple vehicles.

## Ground Floor

### Entrance Hall

Entrance door to the front, stairs to the first floor.

### Kitchen / Breakfast Room

Window to the front, a range of wall and base units with rolled edge work surfaces, sink drainer, integrated oven and hob with extractor fan, vinyl flooring, radiator.

### Lounge

French patio doors and windows to the rear, laminate flooring, radiator.

### Cloakroom

Wash hand basin, low level WC.

## First Floor

### Landing

### Bedroom Two

Window to the rear, radiator, laminate flooring.

### Bedroom Three

Window to the front, radiator, laminate flooring.

### Bathroom

Bath with mixer tap and shower attachment, shower screen, wash hand basin, low level WC, vinyl flooring, radiator.

## Second Floor

### Master Bedroom

Sky light windows, carpet flooring, radiator.

### Ensuite

Window to the front, walk in shower cubicle, wash hand basin, low level WC, vinyl flooring.

## Externally

### Driveway

Off street parking for multiple vehicles.

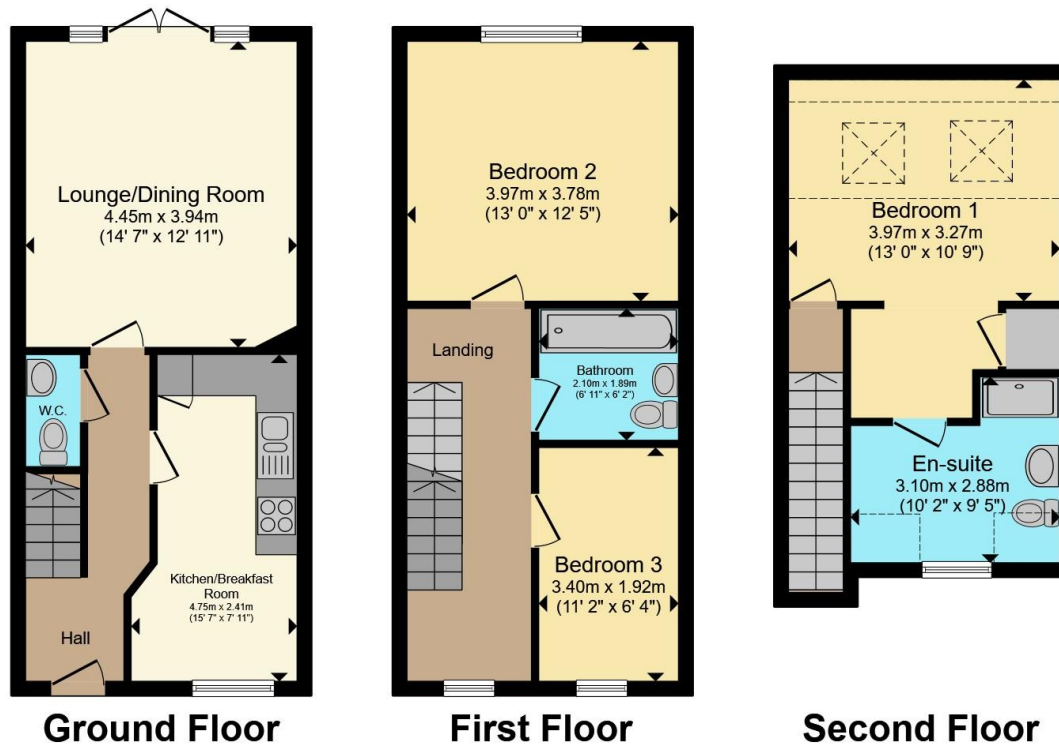
### Rear Garden

Fully enclosed rear garden, decking area with pergola, decking area with garden shed, laid to lawn.









Total floor area 101.3 m<sup>2</sup> (1,090 sq.ft.) approx

This floor plan is for illustrative purposes only. It is not drawn to scale. Any measurements, floor areas (including any total floor area), openings and orientation are approximate. No details are guaranteed, they cannot be relied upon for any purpose and they do not form part of any agreement. No liability is taken for any error, omission or misstatement. A party must rely upon its own inspection(s). Powered by [www.propertybox.io](http://www.propertybox.io)



To view this property please contact Connells on

**T 01536 747320**  
**E oakleyvale@connells.co.uk**

10 Charter Court Butland Road Oakley Vale  
 CORBY NN18 8QT

EPC Rating: C Council Tax  
 Band: C

Tenure: Freehold

**view this property online [connells.co.uk/Property/OKV307716](http://connells.co.uk/Property/OKV307716)**



1. MONEY LAUNDERING REGULATIONS Intending purchasers will be asked to produce identification documentation at a later stage and we would ask for your co-operation in order that there will be no delay in agreeing the sale. 2. These particulars do not constitute part or all of an offer or contract. 3. The measurements indicated are supplied for guidance only and as such must be considered incorrect. Potential buyers are advised to recheck measurements before committing to any expense. 4. We have not tested any apparatus, equipment, fixtures, fittings or services and it is in the buyers interest to check the working condition of any appliances.

Connells Residential is registered in England and Wales under company number 1489613, Registered Office is Cumbria House, 16-20 Hockliffe Street, Leighton Buzzard, Bedfordshire, LU7 1GN. VAT Registration Number is 500 2481 05.

**See all our properties at [www.connells.co.uk](http://www.connells.co.uk) | [www.rightmove.co.uk](http://www.rightmove.co.uk) | [www.zoopla.co.uk](http://www.zoopla.co.uk)**

Property Ref: OKV307716 - 0003