



7 Beech Tree Road, Featherstone, Pontefract, WF7 5EB

Nestled on Beech Tree Road in the charming area of Featherstone, Pontefract, this delightful end terrace house offers a perfect blend of comfort and practicality. Built in 1945, this post-war property has been thoughtfully designed to cater to modern living while retaining its classic appeal.

Spanning an impressive 893 square feet, the house features three spacious reception rooms, providing ample space for relaxation, entertaining, or family gatherings. The well-proportioned layout ensures that each room flows seamlessly into the next, creating a warm and inviting atmosphere throughout the home.

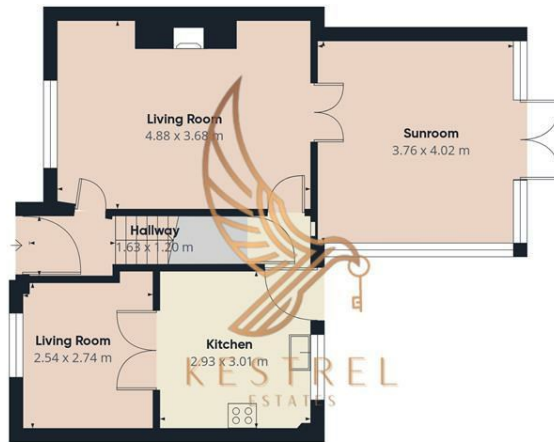
The property boasts three comfortable bedrooms, ideal for families or those seeking extra space for guests or a home office. The single bathroom is conveniently located, ensuring ease of access for all residents.

One of the standout features of this property is the generous parking space, accommodating up to three vehicles. This is a rare find in the area and adds significant value for those with multiple cars or visitors.

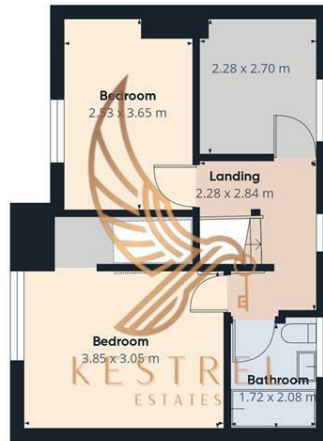
With its prime location in Featherstone, residents will enjoy easy access to local amenities, schools, and transport links, making it an ideal choice for families and commuters alike. This charming end terrace house presents a

- Perfect for families
- Larger than average garden
- Close to local parks and schools
- Close to local amenities
- 3 reception rooms
- Off street parking

£180,000



Floor 0



Floor 1



Approximate total area⁽¹⁾
91.6 m²

(1) Excluding balconies and terraces

Calculations reference the RICS IPMS 3C standard. Measurements are approximate and not to scale. This floor plan is intended for illustration only.

GIRAFFE360

Energy Efficiency Rating		
	Current	Potential
<i>Very energy efficient - lower running costs</i>		
(92 plus) A		
(81-91) B		
(69-80) C		
(55-68) D		
(39-54) E		
(21-38) F		
(1-20) G		
<i>Not energy efficient - higher running costs</i>		
England & Wales	EU Directive 2002/91/EC	