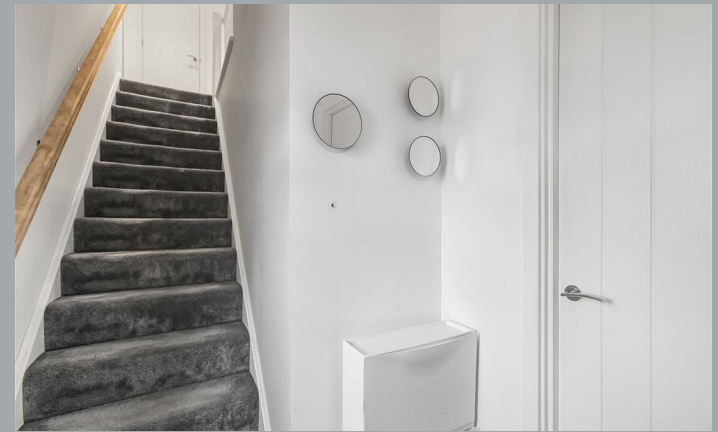




9, Taplow Avenue, Hertford
SG14 2GP
Price Guide £675,000



stevenoates.com



9 Taplow Avenue, Hertford, Herts, SG14 2GP

Steven Oates are delighted to offer this lovely appointed 4 bedroom linked detached family home located within the highly popular Croudace Homes development, Blakesware Manor. This excellent family home which has recently been built, has also benefited from fitted blinds and professionally landscaped gardens. On the ground floor, there is an entrance hall, spacious living room, downstairs W.C. and a contemporary fully fitted kitchen/dining room with a useful utility cupboard. On the first floor, there are 4 good size double bedrooms, a family bathroom and an en-suite shower room to the principal bedroom. This property enjoys a sunny south facing garden, useful carport for sheltered parking, and a further off street parking space behind wooden gates.

The popular Blakesware Manor development is located on the western outskirts of Hertford offering convenient access to Hertford North mainline station which provides services to London's Moorgate and Kings Cross. The development is only a short distance from Panshanger Park which offers excellent dog walks and trails, whilst the quaint village of Hertingfordbury is also a short stroll away which includes the popular White Horse village pub.



70 Fore Street, Hertford, Hertfordshire, SG14 1BY



70 Fore Street, Hertford, Hertfordshire, SG14 1BY



70 Fore Street, Hertford, Hertfordshire, SG14 1BY



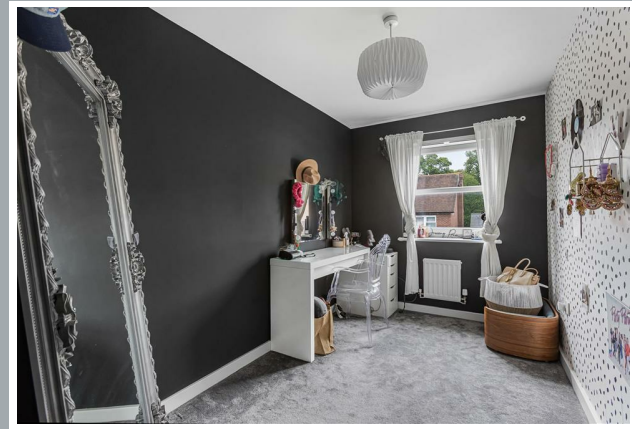
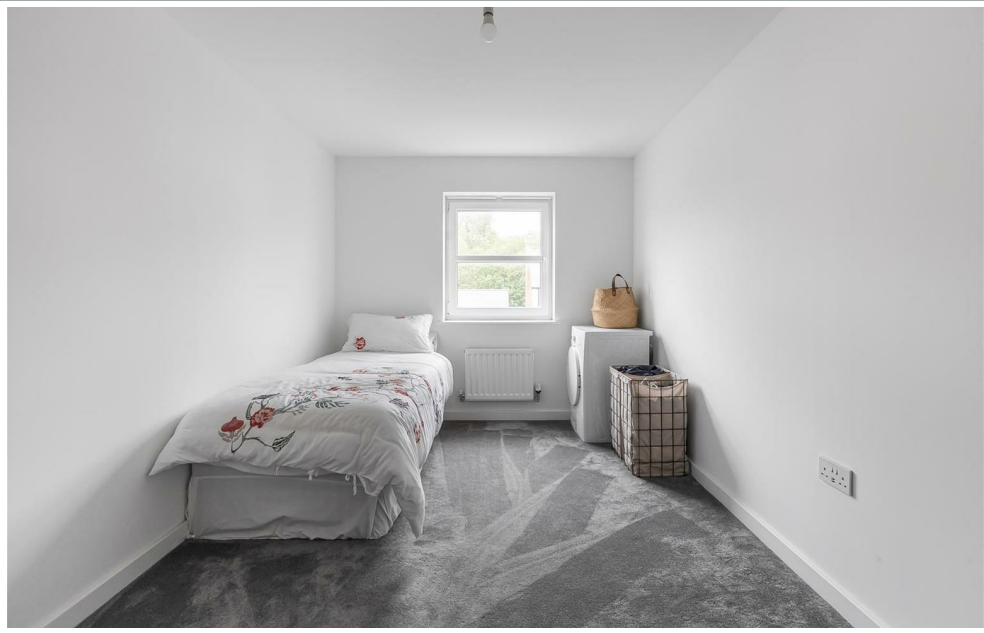
70 Fore Street, Hertford, Hertfordshire, SG14 1BY



70 Fore Street, Hertford, Hertfordshire, SG14 1BY



70 Fore Street, Hertford, Hertfordshire, SG14 1BY



70 Fore Street, Hertford, Hertfordshire, SG14 1BY



70 Fore Street, Hertford, Hertfordshire, SG14 1BY

Approximate Gross Internal Area 1273 sq ft - 119 sq m

Ground Floor Area 534 sq ft – 50 sq m

First Floor Area 739 sq ft – 69 sq m



Floor plan produced in accordance with RICS Property Measurement 2nd Edition. Although Pink Plan Ltd ensures the highest level of accuracy, measurements of doors, windows and rooms are approximate and no responsibility is taken for error, omission or misstatement. These plans are for representation purposes only and no guarantee is given on the total square footage of the property within this plan. The figure icon is for initial guidance only and should not be relied on as a basis of valuation.



These particulars, whilst believed to be accurate are set out as a general outline only for guidance and do not constitute any part of an offer or contract. Intending purchasers should not rely on them as statements of representation of fact, but must satisfy themselves by inspection or otherwise as to their accuracy. No person in this firm's employment has the authority to make or give any representation or warranty in respect of the property.

