



## MILL STREET, SE1

£425,000

Warehouse conversion  
Off-street parking  
Residents swimming pool  
River views  
Day porter  
Communal roof terrace

@marshandparsons  
marshandparsons.co.uk

MARSH &  
PARSONS



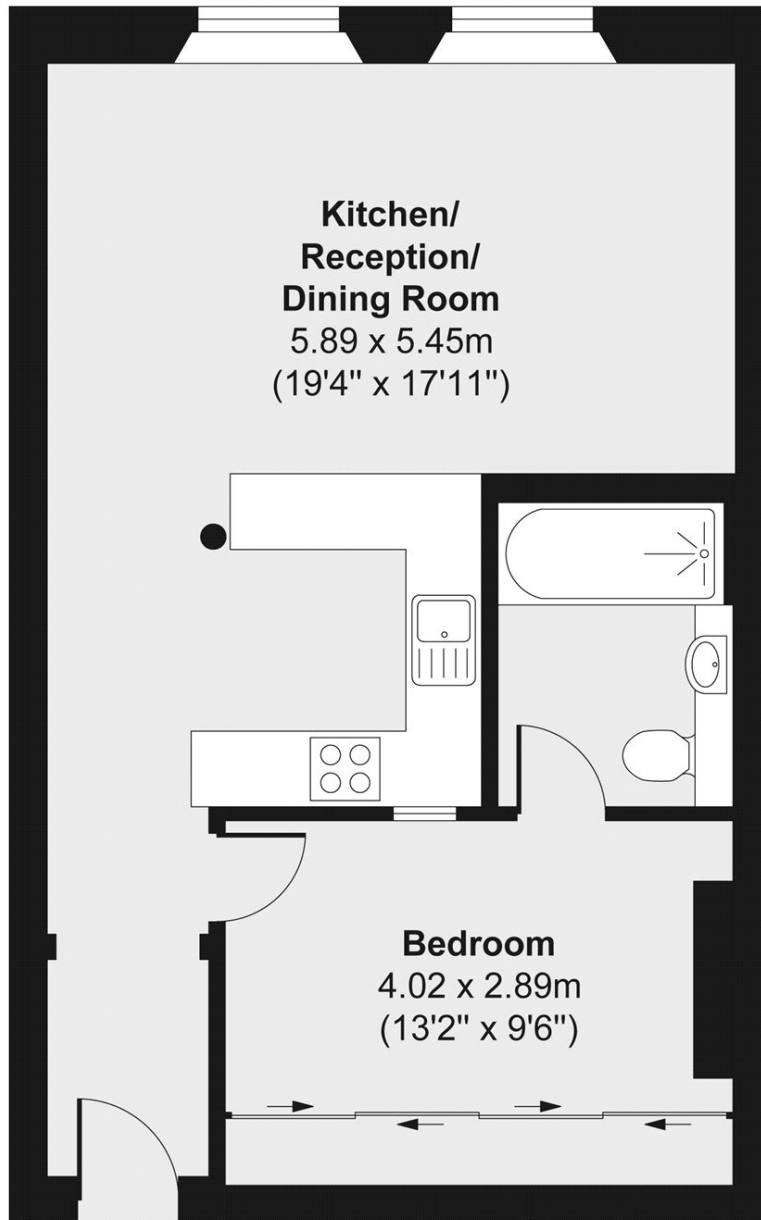
# ABOUT THE PROPERTY

A beautifully presented apartment situated within this historic 19th century warehouse conversion. The property maintains many of its original features, including exposed brick work, oak beams and original cast iron windows, and further benefits from views of St Saviours Dock, the River Thames, and a communal roof terrace.

Located near Shad Thames, and close to the surrounding areas of Bermondsey Street, Maltby Street Market, Borough Market, St Katharine Docks and London Bridge. Transport links include London Bridge station, offering the underground and National Rail services, whilst the Thames Clipper Riverboat services are nearby.



# STEP INSIDE MILL STREET



Total area (approx.) 48.24 sq. m (519 sq. ft)

**Kennington**  
020 7587 1533

Energy Rating: C We aim to make our particulars both accurate and reliable. However, they are not guaranteed; nor do they form part of an offer or contract. If you require clarification on any points then please contact us, especially if you're traveling some distance to view. Please note that appliances and heating systems have not been tested and therefore no warranties can be given as to their good working order

**MARSH &  
PARSONS**