

HUNTERS[®]

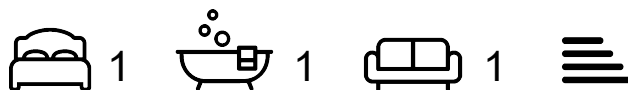
HERE TO GET *you* THERE



Seven Sisters Road

London, N4 2LX

£2,000 Per Month



*** £100.00 PAID TOWARDS YOUR MOVE ***

Hunters are pleased to offer to the market a stunning, newly renovated 1 bedroom apartment in this converted Victorian Property. Property benefits from bespoke kitchens with quartz work surfaces and integrated appliances. All bathrooms are fully tiled with power showers and some apartments have balconies and terraces.

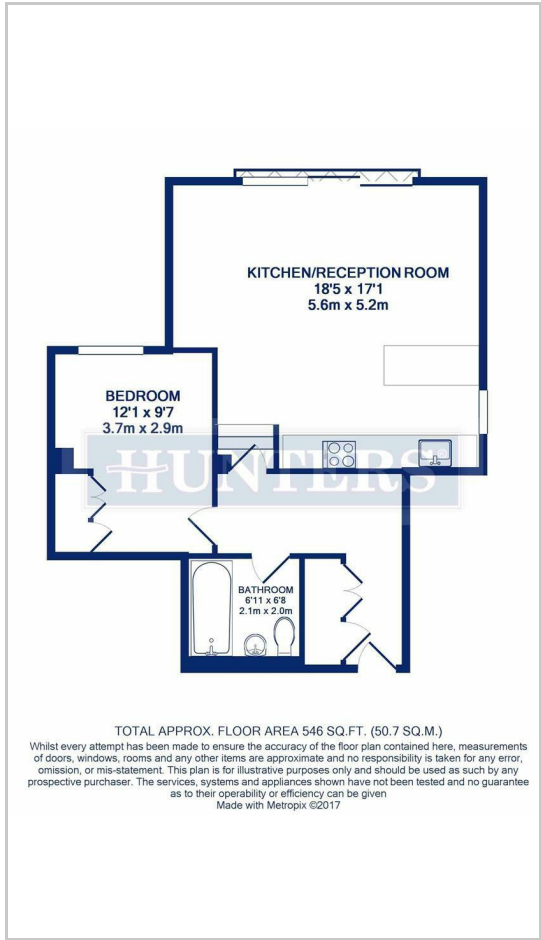
Located a stones throw away from Manor House tube and 6 minutes from Finsbury Park tube on Piccadilly and Victoria Lines as well as mainline rail links and a variety of bus links servicing the West End, The City and Canary Wharf. Open spaces on your door step at Finsbury Park and Clissold Park.



Area Map



Floor Plans



Energy Efficiency Graph



These particulars are intended to give a fair and reliable description of the property but no responsibility for any inaccuracy or error can be accepted and do not constitute an offer or contract. We have not tested any services or appliances (including central heating if fitted) referred to in these particulars and the purchasers are advised to satisfy themselves as to the working order and condition. If a property is unoccupied at any time there may be reconnection charges for any switched off/disconnected or drained services or appliances - All measurements are approximate. **THINKING OF SELLING?** If you are thinking of selling your home or just curious to discover the value of your property, Hunters would be pleased to provide free, no obligation sales and marketing advice. Even if your home is outside the area covered by our local offices we can arrange a Market Appraisal through our national network of Hunters estate agents.