

oakheart

£1,100 Per Month

Per Month

Marine Parade East, Clacton-On-Sea



This beautifully refurbished two-bedroom apartment offers contemporary coastal living in a prime Clacton-on-Sea location. Finished to a high standard throughout, the property combines modern style with comfort and practicality.

The apartment features a bright and spacious living area that opens onto a private balcony with breathtaking sea

views – the perfect spot to relax and enjoy the coastal scenery. There are two generously sized bedrooms, along with a stylish bathroom designed with a sleek, modern finish.

Further benefits include one allocated parking space, making this an ideal home for professionals, downsizers, or as a seaside retreat.

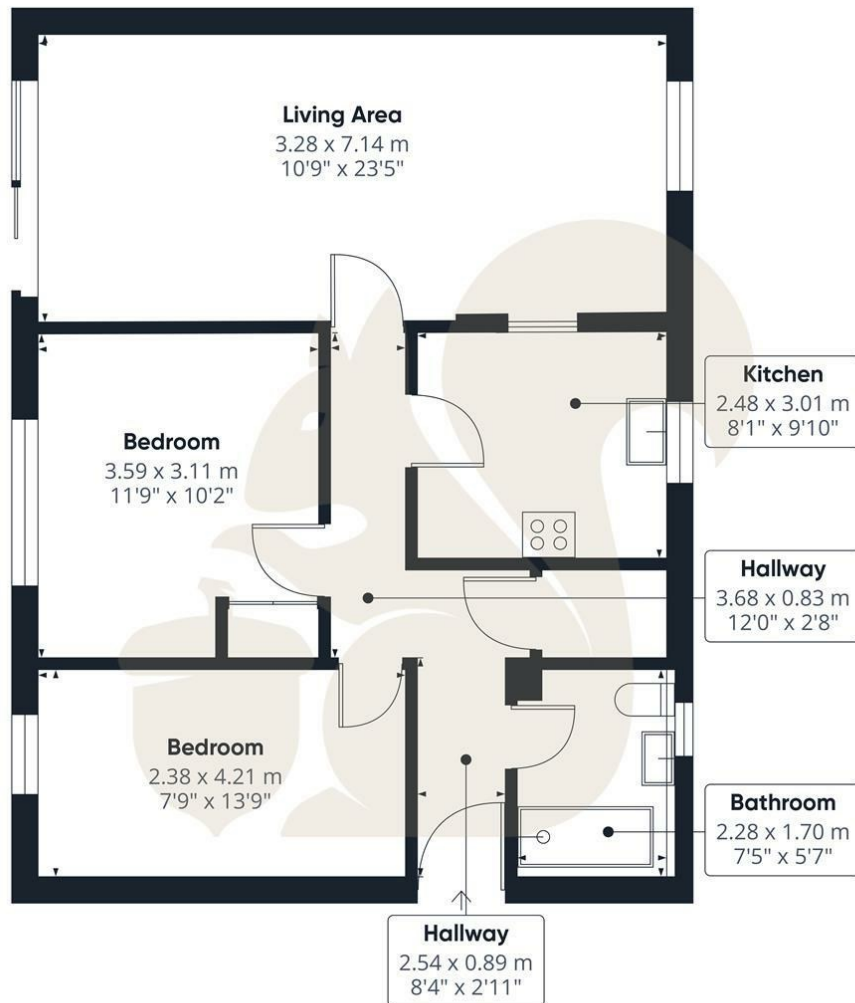
Situated close to local amenities, transport links, and the seafront, this apartment offers the best of coastal living with modern convenience.











**oakheart**

Approximate total area<sup>(1)</sup>  
64.8 m<sup>2</sup>  
697 ft<sup>2</sup>

(1) Excluding balconies and terraces

Calculations reference the RICS IPMS 3C standard. Measurements are approximate and not to scale. This floor plan is intended for illustration only.


GIRAFFE360

Local Authority:  
Tendring District Council

Tenure:

Council Tax Band:  
C

**Energy Efficiency Rating**

	Current	Potential
<i>Very energy efficient - lower running costs</i>		
(92 plus) <b>A</b>		
(81-91) <b>B</b>		
(69-80) <b>C</b>	73	80
(55-68) <b>D</b>		
(39-54) <b>E</b>		
(21-38) <b>F</b>		
(1-20) <b>G</b>		
<i>Not energy efficient - higher running costs</i>		
<b>England &amp; Wales</b>	EU Directive 2002/91/EC 	

Agents Note: Whilst every care has been taken to prepare these particulars, they are for guidance purposes only. All measurements are approximate and are for general guidance purposes only and whilst every care has been taken to ensure their accuracy, they should not be relied upon.

Oakheart Colchester - Lettings  
01206 803 308  
colchesterlettings@oakheart.co.uk  
2b Cotman Road, Colchester, Essex, CO3 4QJ

**oakheart**