



Guide Price
£500,000

Freehold

3x  2x  1x 

**The Old School, Mill
Lane, Shepherdswell,
Dover, CT15**

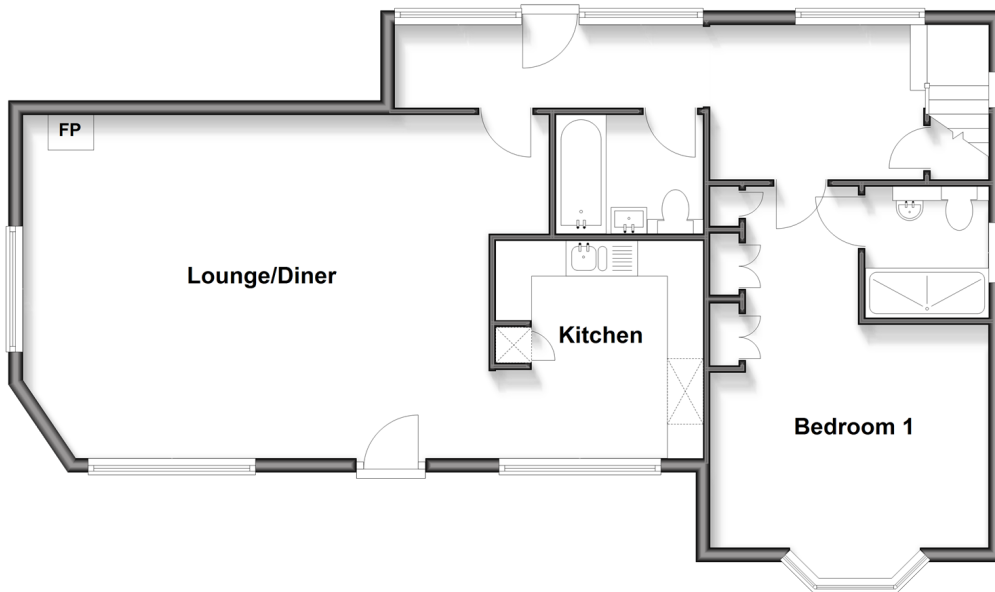
OVER 60?

Secure this property
for up to **59% less!**

Wards
Helping you move forwards

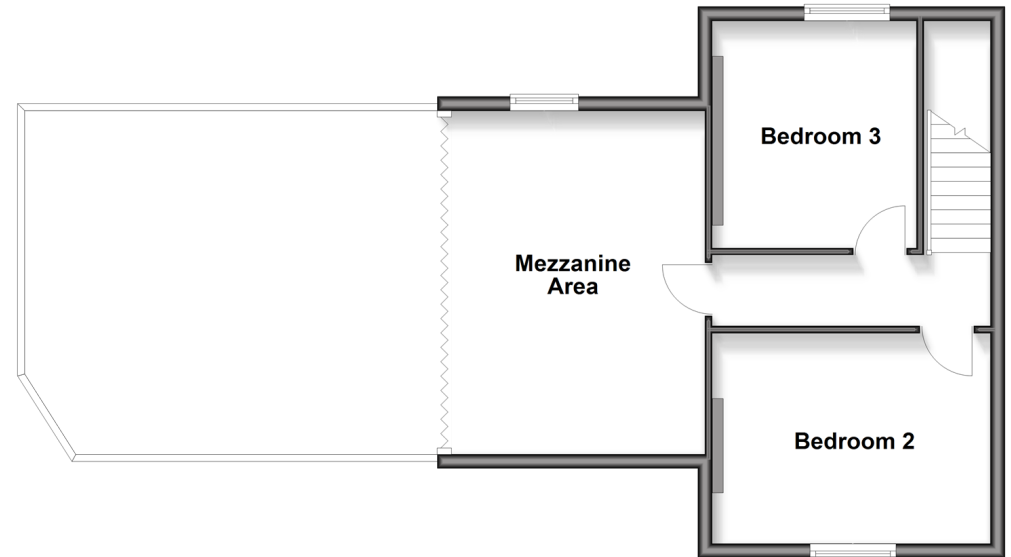
Ground Floor

Approx. 80.7 sq. metres (868.9 sq. feet)



First Floor

Approx. 46.4 sq. metres (499.3 sq. feet)
(excluding unnamed room)



Accommodation

GROUND FLOOR

Entrance Porch
Lounge/Diner : 21'1 x 15'9 (6.43m x 4.80m)
Kitchen : 9'9 x 9'5 (2.97m x 2.87m)
Bathroom: 7'11 x 5'7 (2.41m x 1.70m)
Rear Porch
Bedroom 1: 18'6 x 12'8 (5.64m x 3.86m)
En-Suite Shower Room

FIRST FLOOR

Landing
Bedroom 2: 12'9 x 9'3 (3.89m x 2.82m)
Bedroom 3: 10'6 x 9'3 (3.20m x 2.82m)

MEZZANINE

Mezzanine Area: 15'10 x 11'9 (4.83m x 3.58m)

OUTSIDE

Front Garden
Off Road Parking
Rear Garden



Main features

- Stunning character property in converted school
- Beautiful features, vaulted ceiling with log burner and mezzanine floor, ideal for an office
- Off street parking for 3 vehicles
- Easy access to A2/M2 as well as train station, ideal if you need to commute
- Shepherdswell benefits from a local Co-op and pub



Nearest Schools

Primary Schools: Sibertswold Primary at Shepherdswell 0.1 miles, Lydden Primary 1.5 miles, Eythorne Elvington Primary 1.6 miles
Secondary Schools: Dover Christchurch Academy 3.6 miles, Dover Girls Grammar School 4.5 miles.



Transport Information

Train Stations: Shepherdswell 0.3 miles, Snowdown 2.3 miles, Kearsney 2.9 miles



Address

The Old School, Mill Lane, Shepherdswell, Dover, CT15



Directions

For directions to this property please contact us.



Wards
Helping you move forwards

Call Dover Branch 01304 214876 ■ wardsofkent.co.uk



■ If buying to rent, please check if Local Authority licensing schemes apply before proceeding

■ Through a Homewise Home For Life Plan people aged 60+ can secure this property for up to 59% less, by purchasing a Lifetime Lease



10728640/20260619/TE/OV