



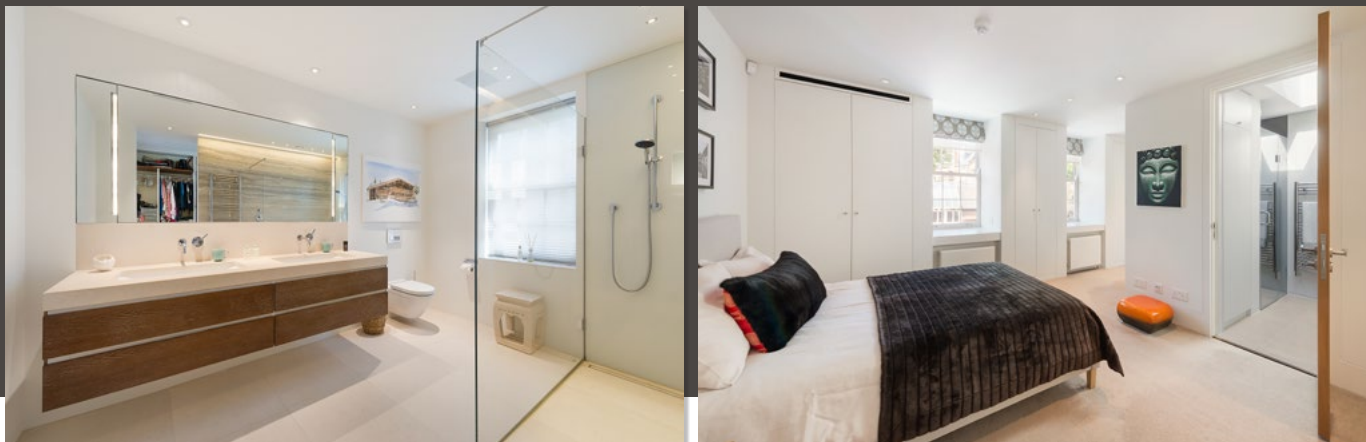
YEOMAN'S ROW

Knightsbridge SW3

An immaculate, freehold, semi-detached family home quietly located in the heart of Knightsbridge, a moment's walk from Harrods in one direction and South Kensington in the other.

The house was the subject of complete renovation some fourteen years ago, including a basement excavation, new roof and installation of state-of-the-art plumbing and electrical systems. It was then refurbished in December 2024. In short, the house can be considered completely modernised and upgraded behind the period façade.





ACCOMMODATION & AMENITIES

- Four double bedrooms
- Four bath/shower rooms (three en-suite)
- Cloakroom
- Entrance hall
- Three reception rooms
- Kitchen/dining room
- Two patios
- Full air conditioning throughout
- Underfloor heating in principal rooms and wet areas
- Fully integrated BMS system remotely controlled with all rooms independently cooled/heated
- Lutron lighting systems
- Crestron AV system
- CCTV Intercom

Guide Price: £6,250,000

Tenure: Freehold

Local Authority: The Royal Borough of Kensington & Chelsea

Council Tax: Band H

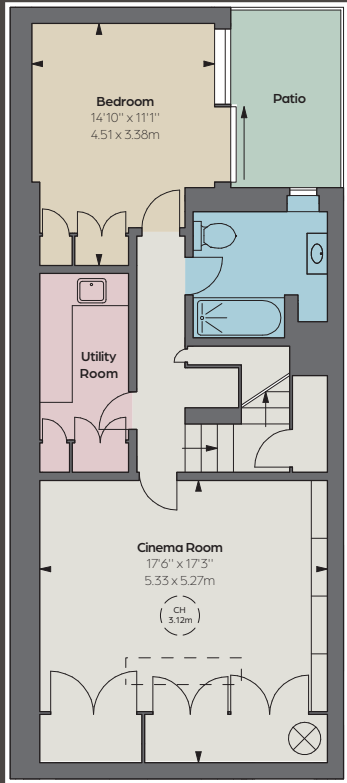
EPC: Rating D

Approximate Gross Internal Area
2,897 sq ft / 269.32 sq m

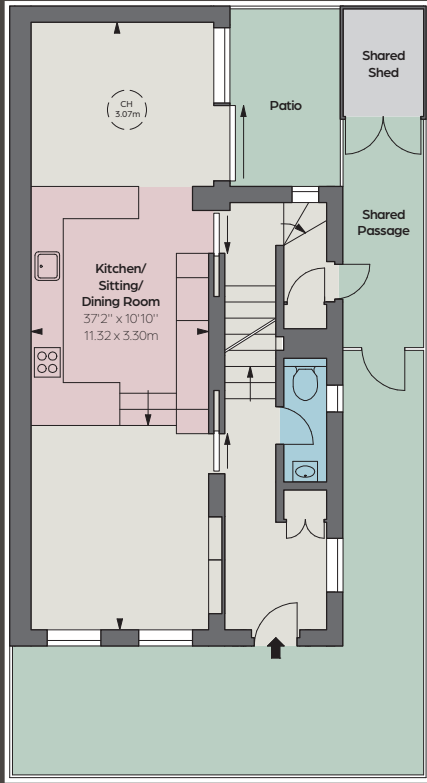
Approximate Gross
Outdoor Patio Area
158 sq ft / 14.68 sq m



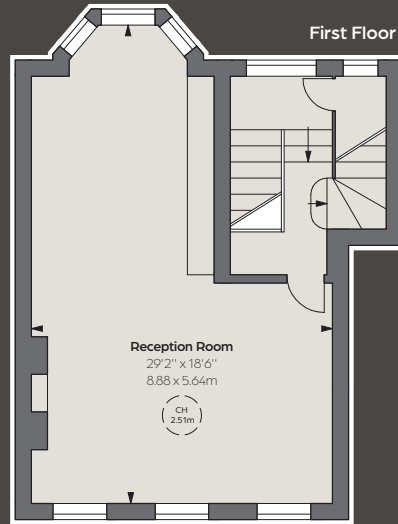
Lower Ground Floor



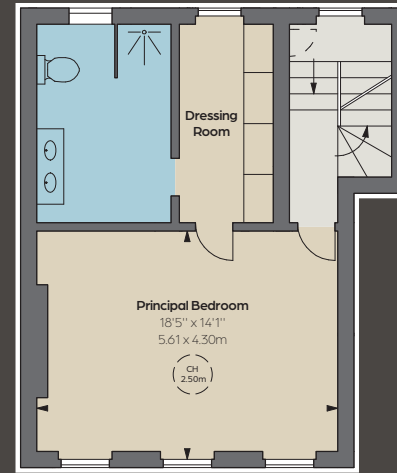
Ground Floor



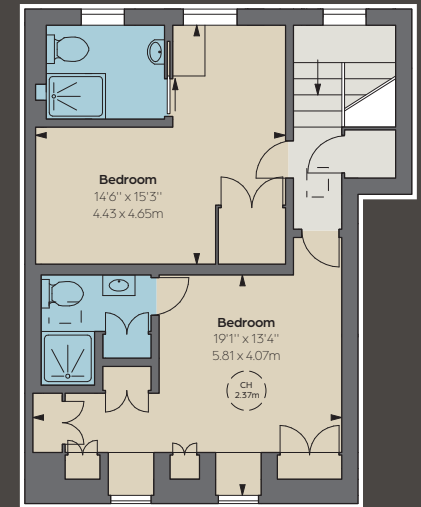
First Floor



Second Floor



Third Floor



CH: Ceiling height

Floorplan for guidance only, not to scale or for valuations purposes. It must not be relied upon as a statement of fact. All measurements and areas are approximate and have been prepared in accordance with the current edition of theRICS Code of Measuring Practice.

© Alex Winship Photography Ltd.

THE
BROCHURE
ALEX
WINSHIP

These particulars are for general information only and do not constitute any part of an offer or contract. All statements contained therein are made without responsibility on the part of the vendors or lessors and are not to be relied upon as statement or representation of fact. Intending purchasers or lessees must satisfy themselves, by inspection, or otherwise, as to the correctness of each of the statements or dimensions contained in these particulars. This floorplan is for guidance only and not for valuation purposes. 28/04/25 JLL-250211C-05-GG

Savills Knightsbridge
knightsbridge_sales@savills.com
020 7581 5234

Savills Sloane Street
sloanestreet@savills.com
020 7730 0822
savills.co.uk



JLL Knightsbridge
knightsbridge@eu.jll.com | 020 7306 1600
JLL Chelsea
chelsea@eu.jll.com | 020 7399 5010
jll.co.uk/residential