







78 Hague

South Street • Park Hill • S2 5AS

Guide Price £275,000 - £290,000

Set within the iconic Park Hill flats and their celebrated 'streets in the sky', this exceptional 3 bedroom apartment seamlessly blends mid-century architectural heritage with contemporary design. Originally conceived in the 1960s and thoughtfully reimaged by Urban Splash, Park Hill offers a rare balance of vibrant urban living and a calm, community-focused environment. Located on Hague, between levels 5 and 6, the apartment enjoys spectacular city views alongside a generous private balcony. Characterful features such as exposed concrete walls, column radiators, and oak flooring sit comfortably alongside modern fittings and finishes. A private entrance opens into a spacious lobby, ideal for bicycle storage and larger items. Also on this level is a generous double bedroom with an en-suite shower room and its own private balcony. Stairs rise to the impressive open-plan living area, flooded with natural light from floor-to-ceiling windows and offering far-reaching views across Sheffield city centre, complemented by a decked balcony. The kitchen is both stylish and practical, featuring solid ply and white-faced base units with matching worktops, integrated appliances, and floor-to-ceiling storage. Two further bedrooms provide excellent natural light and privacy, enjoying tranquil views across the Park Hill gardens and silver birch trees. The main bathroom is fitted with a contemporary Vitra white suite, including a bath with overhead shower. The apartment benefits from a sustainable heating system via the Sheffield District Energy Network, delivering eco-friendly hot water and heating throughout. Communal gardens, designed by renowned landscape architects Grant Associates, create a green sanctuary within the city, featuring wildflower planting, silver birch copses, designer seating, open lawns, and a table tennis area. Car parking spaces are available to rent on a 6- or 12-month basis. Positioned just above Sheffield city centre, Park Hill is a landmark Grade II* listed development that has been transformed into a thriving community. Cafés, restaurants, art spaces, and green areas such as Sheaf Valley Park are close by, while excellent transport links—including tram stops, the train station, and city centre amenities—are all within easy reach.





- Architect Designed Iconic Apartment
- 3 Bedrooms & 2 Bathrooms
- Modern Kitchen with Appliances
- Panoramic Views Over the City Centre
- Sought After Park Hill Development
- Exposed Concrete Elements
- District Heating System
- Service Charge TBC - Plumlife
- Leasehold 249 years from 14/04/2009
- Council Tax Band A, EPC Rating B



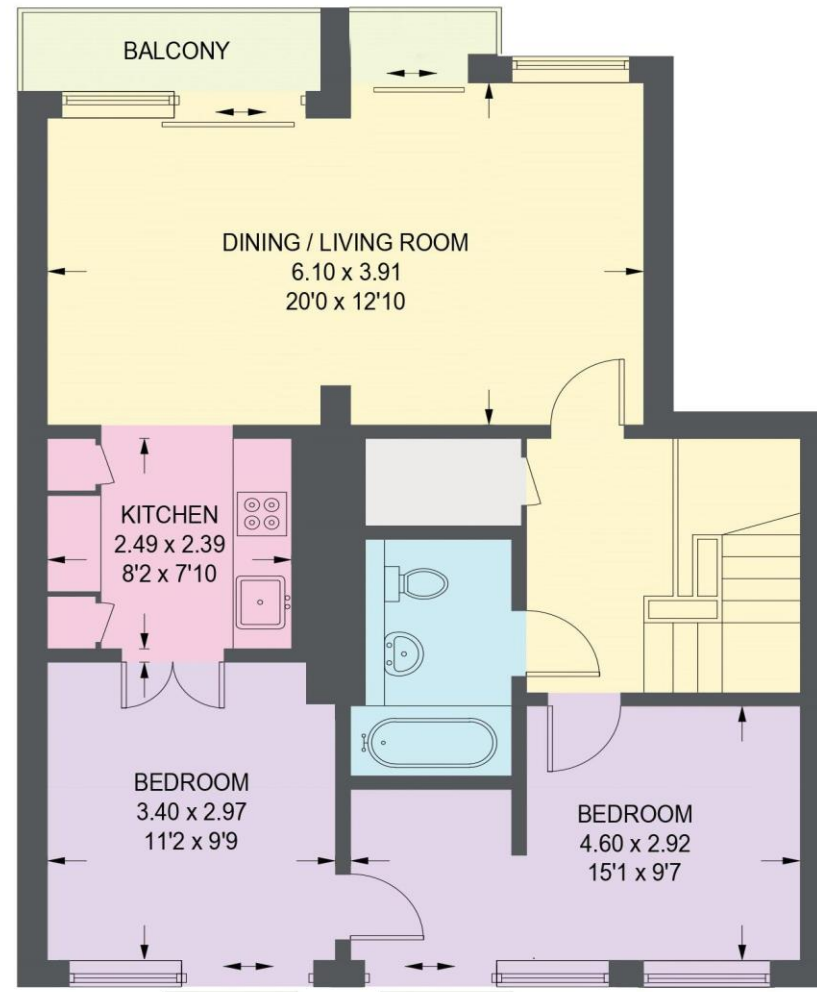


78 HAGUE SOUTH STREET

APPROXIMATE GROSS INTERNAL AREA = 106.1 SQ M / 1142 SQ FT



FIRST FLOOR
35.8 SQ M / 385 SQ FT



SECOND FLOOR
70.3 SQ M / 757 SQ FT

Illustration for identification purposes only, measurements are approximate, not to scale



haus

West Bar House, 137 West Bar, Sheffield, S3 8PU
hello@haushomes.co.uk haushomes.co.uk

0114 276 8868