



jordan fishwick

Stockport Road

Stockport Road, WA15 7LH

Asking Price £390,000



The Property

Jordan Fishwick are proud to present for sale this beautiful first-floor apartment, forming part of a stunning Victorian conversion and boasting an abundance of charming period features throughout. This spacious four-bedroom apartment is ideally located within the catchment area for Wellington School and offers convenient access to local motorway and transport links, as well as nearby sports clubs. The property enjoys attractive views over Altrincham Golf Course and Timperley Hall, and is within walking distance of Altrincham town centre.

In brief, the accommodation comprises an entrance hall with staircase rising to the first floor, leading into the main hallway. From here, there is access to a generous lounge, a well-appointed kitchen diner, the principal bedroom with adjoining dressing room, a family bathroom, and a fourth bedroom. To the second floor, there are two further well-proportioned double bedrooms and a shower room, all complemented by characterful period features throughout the property.

Externally, the property benefits from well-maintained communal grounds, off-road parking, and a garage owned by the apartment.

Early viewing is highly recommended to fully appreciate this charming and characterful home.

Directions

WA15 7LH



Map data ©2026 Google

- First Floor Four Bedroom Apartment
- Walking Distance to Altrincham Town Centre
- Principle Bedroom with Dressing Room
- Period Features Throughout
- Catchment for Wellington School
- Share of Freehold
- Kitchen Diner
- Two Bathrooms
- Garage
- Off Road Parking

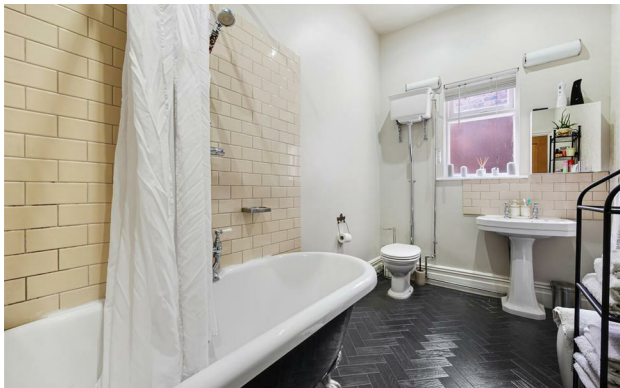
Postcode - WA15 7LH

EPC Rating - F

Floor Area - 1362.00 sq ft

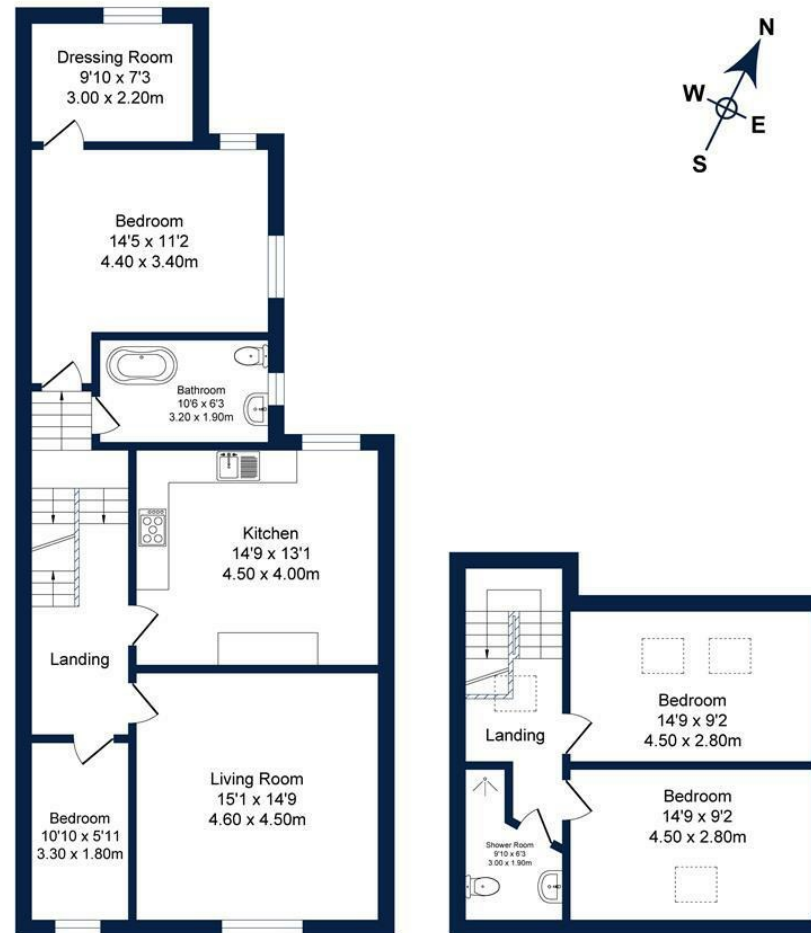
Local Authority - Trafford

Council Tax - B



Stockport Road, Altrincham
Total Approx. Floor Area 1362 Sq.ft. (126.6 Sq.M.)

Surveyed and drawn by Lens Media for illustrative purposes only. Not to scale. Whilst every attempt was made to ensure the accuracy of the floor plan, all measurements are approximate and no responsibility is taken for any error.



First Floor
Approx. Floor Area 948 Sq.Ft (88.1 Sq.M.)

Second Floor
Approx. Floor Area 414 Sq.Ft (38.5 Sq.M.)



These particulars are believed to be accurate but they are not guaranteed and do not form a contract. Neither Jordan Fishwick nor the vendor or lessor accept any responsibility in respect of these particulars, which are not intended to be statements or representations of fact and any intending purchaser or lessee must satisfy himself by inspection or otherwise as to the correctness of each of the statements contained in these particulars. Any floorplans on this brochure are for illustrative purposes only and are not necessarily to scale.

Offices at: Chorlton, Didsbury, Disley, Hale, Glossop, Macclesfield, Manchester Deansgate, Manchester Whitworth Street, New Mills, Sale, Wilmslow and Withington

0161 929 9797

hale@jordanfishwick.co.uk
www.jordanfishwick.co.uk