



The Spike, Radwinter Road, Saffron Walden  
**OIRO £350,000 Leasehold**



# Key Features



125 Years remaining as of 01 Feb 1999

£240.00 Ground Rent pa

Review due: Ask Agent

£3145.00 Service Charge pa

Review due: Ask Agent

- Three double bedroom house
- En-suite to main bedroom
- Very well presented
- Large lounge/diner
- Spacious kitchen/breakfast room

This immaculately maintained home offers light and spacious living throughout. The ground floor features a generous lounge/dining area filled with natural light, alongside a well-equipped, good-sized kitchen/breakfast room-perfect for family living and entertaining. A convenient downstairs cloakroom and a large storage cupboard complete the ground floor accommodation.

Upstairs, there are three double bedrooms,





including a principal bedroom with en-suite shower room, and a modern family bathroom.

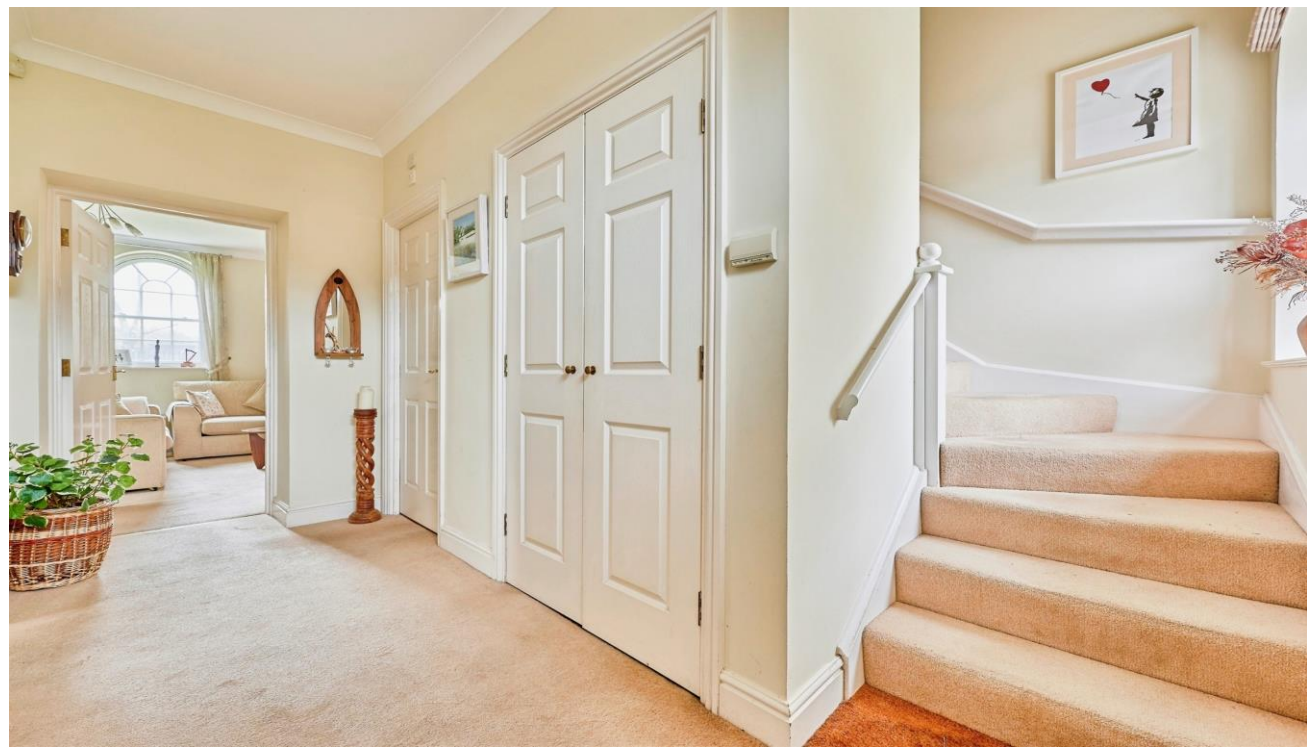
The property enjoys a charming position within a historic development in Saffron Walden, backing onto beautifully maintained communal gardens. Additional benefits include two allocated parking spaces and a useful bike shed.

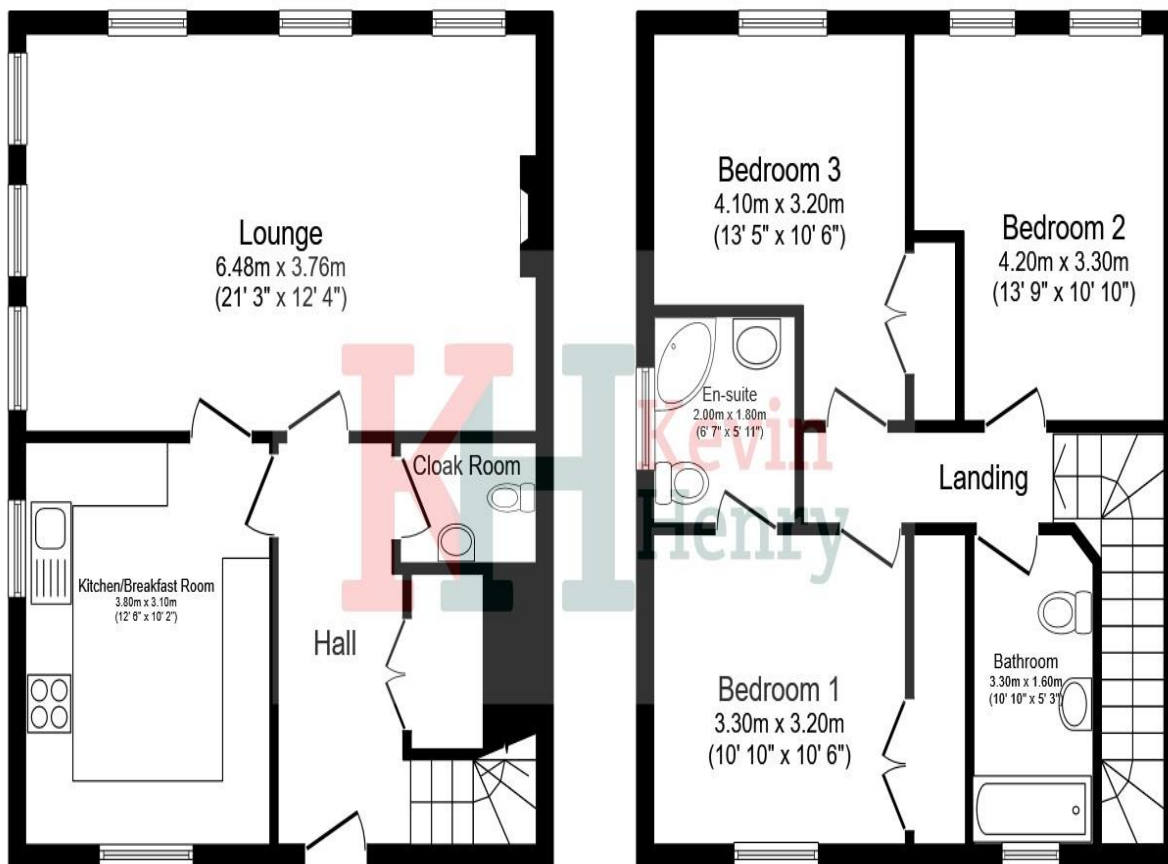
Ideally located close to local amenities, shops, and schools, this property combines modern comfort with character and convenience-an ideal home in a sought-after setting.

Saffron Walden is a fine old market town with a good range of shopping, schooling and recreational facilities, including the renowned Saffron Hall, which is situated at the County High School. The town also boasts an independent, award-winning cinema showing mainstream and art house films, a museum and art galleries. There are several sports facilities, including The Lord Butler Fitness and Leisure Centre, with its two swimming pools, squash and tennis courts, health suite, gym and creche. Audley End mainline station (with fast trains to Liverpool Street and Cambridge) is just two miles distance and the M11 access point at Stump Cross 4 miles.

Hallway  
Storage cupboard.

Cloakroom





**Ground Floor**

**First Floor**

Living Room  
6.48m x 3.76m  
21'3" x 12'4"

Kitchen/Breakfast Room  
3.80m x 3.10m  
12'8" x 10'2"

Landing

Bedroom One  
3.30m x 3.20m  
10'10" x 10'6"  
Built in wardrobes.

En-Suite

Bedroom Two  
4.20m max x 3.30m max  
13'9" max x 10'10" max

Bedroom Three  
4.10m max x 3.20m max  
13'5" max x 10'6" max

Bathroom

Outside  
Two allocated parking spaces, bike shed and communal gardens.

This floor plan is for illustrative purposes only. It is not drawn to scale. Any measurements, floor areas (including any total floor area), openings and orientation are approximate. No details are guaranteed, they cannot be relied upon for any purpose and they do not form part of any agreement. No liability is taken for any error, omission or misstatement. A party must rely upon its own inspection(s). Powered by [www.focalagent.com](http://www.focalagent.com)

To view this property call Kevin Henry on:  
01799 513632

# Selling your property?

Contact us to arrange a FREE home valuation.

 01799 513632

 1 Market Street, SAFFRON WALDEN, Essex, CB10 1JB

 sales@kevinhenry.co.uk

 [www.Kevinhenry.co.uk](http://www.Kevinhenry.co.uk)



 SCAN ME



Kevin Henry is a trading name of Sharman Quinney Holdings Limited which is registered in England and Wales under company number 4174227, Registered Office is Cumbria House, 16-20 Hockliffe Street, Leighton Buzzard, Bedfordshire, LU7 1GN. VAT Registration Number is 500 2481 05.

1: These particulars do not constitute part or all of an offer or contract. 2: The measurements indicated are supplied for guidance only and as such must be considered incorrect. 3: Potential buyers are advised to recheck the measurements before committing to any expense. 4: Kevin Henry has not tested any apparatus, equipment, fixtures, fittings or services and it is the buyers interests to check the working condition of any appliances. 5: Kevin Henry has not sought to verify the legal title of the property and buyers must obtain verification from their legal representative. 6: Intending purchasers will be asked to produce identification documentation at a later stage and we would ask your co-operation in order that there will be no delay in agreeing the sale. Ref: SAF101436 - 0001

