



Benson Road, Coventry, CV6 2FE

**SHELDON
BOSLEY
KNIGHT**

LAND AND
PROPERTY
PROFESSIONALS

Property Description

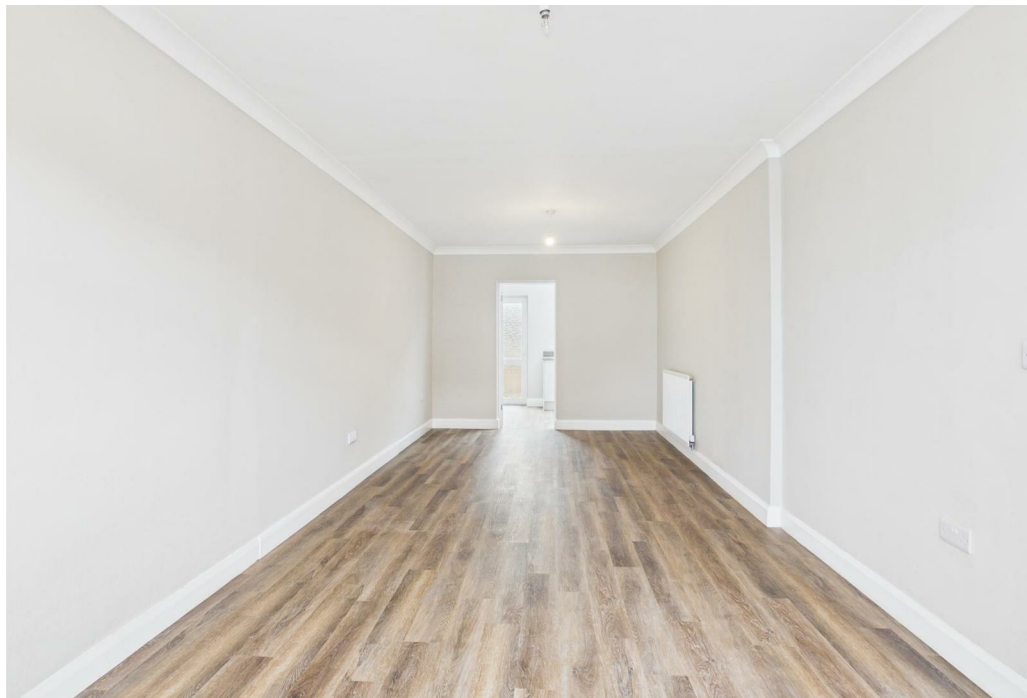
*** AVAILABLE NOW *** This well-presented three-bedroom terraced home is located on Benson Road in the popular residential area of Radford, Coventry, offering convenient access to local amenities, schools, and transport links into Coventry City Centre.

The property comprises an entrance hallway, a bright and spacious living room, a fitted kitchen with oven and hob, and a family bathroom with bath, shower over, WC and sink. Upstairs offers two double bedrooms and one single bedroom.

Externally, the property benefits from a private rear garden and on-street parking.

Offered UNFURNISHED. Council Tax Band B. Energy Rating D.







Key Features

- Available Now
- Keresley Heath, Coventry
- Three Bedrooms
- House
- Unfurnished
- Garden
- Private Driveway
- Council Tax Band B
- Energy Rating D

£1,300 PCM