



201 Hove Park Apartments Goldstone Crescent
Hove, BN3 6LR

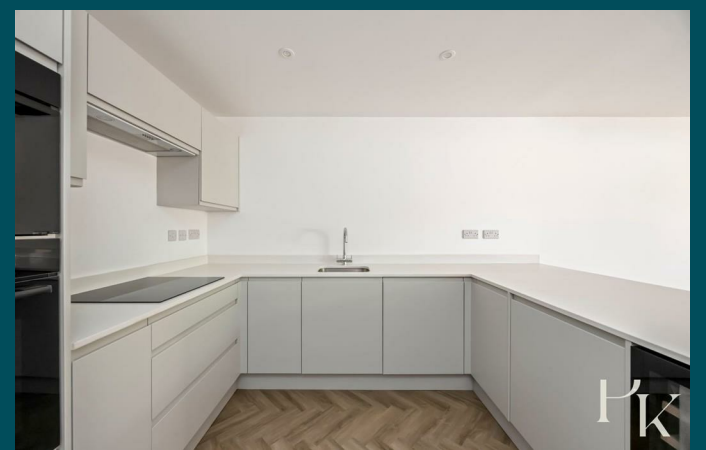
PK



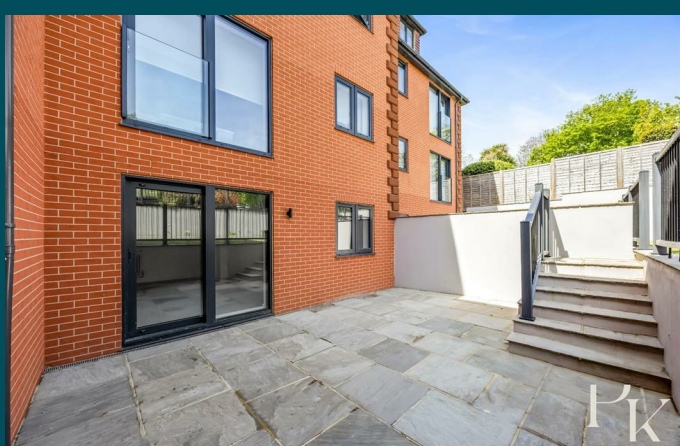
PK



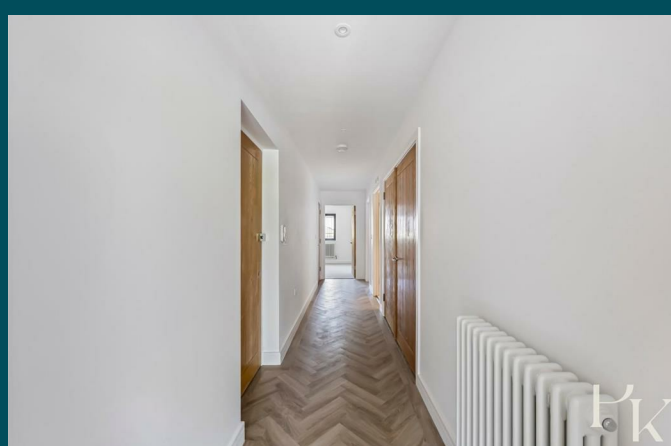
PK



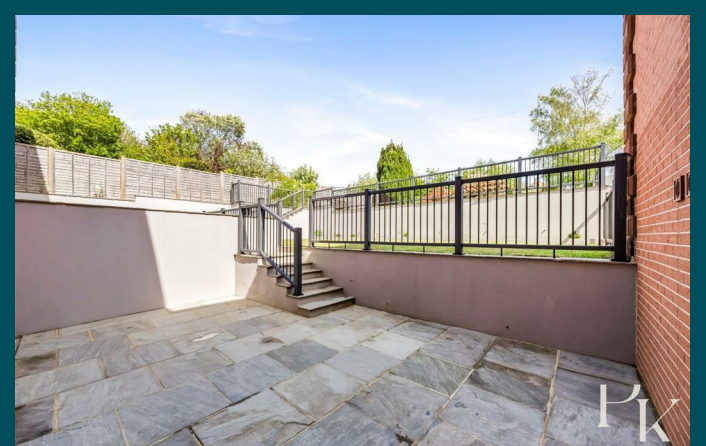
PK



PK



PK



PK

201 Hove Park Apartments Goldstone

Hove, BN3 6LR

Guide price £475,000

****Last Few Remaining Apartments From £475,000****

A beautifully presented, two-bedroom ground floor apartment, set within a newly built development on the enviable Goldstone Crescent. Featuring two private outside terraces and stylish interiors, Hove Park Apartments offers a beautiful setting opposite Hove Park and you are within easy reach of all that Hove has to offer.

Located on the ground floor, this spacious two-bedroom apartment boasts a private rear patio garden and a sunny west-facing balcony at the front. The interior features a thoughtfully designed open-plan living room and kitchen. The kitchen features contemporary cabinetry and premium integrated appliances, complemented by sleek recessed LED lighting and stone worktops.

The open-plan living and kitchen area is filled with natural light, with floor-to-ceiling glass doors opening onto the balcony, perfect for enjoying the afternoon sun. The principal bedroom also enjoys terrace access via glass doors, while a well-sized second bedroom and a stylish, modern bathroom complete the home.

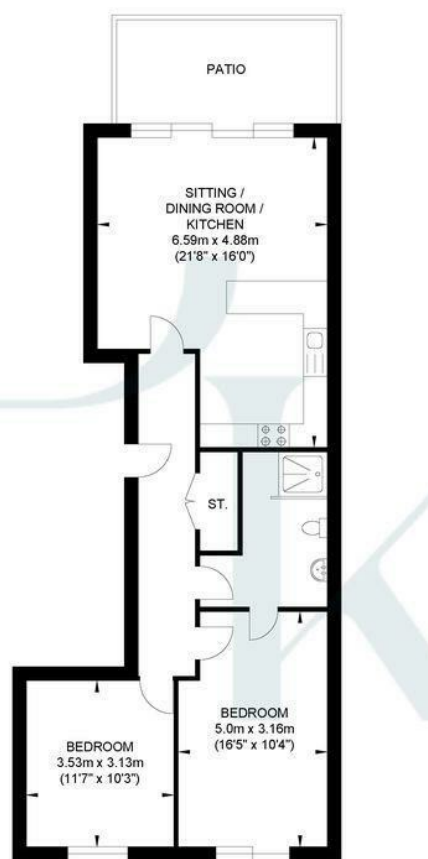
Set in highly regarded location, Hove Park Apartments are perfectly positioned for both convenience and lifestyle. Just moments from the vibrant open spaces of Hove Park, residents can enjoy outdoor activities such as tennis, bowling, and playgrounds, or relax at the popular park café. Waitrose and a diverse range of shops, are close at hand in Goldstone Villas. The iconic Hove seafront is also within easy reach. The property's location lies within the catchment area of several well-regarded primary and secondary schools.

Offered with 999-year leases, no onward chain, and a share of the freehold, these final remaining apartments are fully turnkey, ideal for buyers seeking a smart, immaculately finished home ready to move straight into.

Guide Price £475,000 - £500,000



Goldstone Crescent



Ground Floor
Approximate Floor Area
783.93 sq ft
(72.83 sq m)



Approximate Gross Internal Area = 72.83 sq m / 783.93 sq ft
Illustration for identification purposes only, measurements are approximate, not to scale.

Energy Efficiency Rating		Current	Potential
Very energy efficient - lower running costs			
(92 plus) A		91	91
(81-91) B			
(69-80) C			
(55-68) D			
(39-54) E			
(21-38) F			
(1-20) G			
Not energy efficient - higher running costs			
England & Wales		EU Directive 2002/91/EC	

Environmental Impact (CO ₂) Rating		Current	Potential
Very environmentally friendly - lower CO ₂ emissions			
(92 plus) A			
(81-91) B			
(69-80) C			
(55-68) D			
(39-54) E			
(21-38) F			
(1-20) G			
Not environmentally friendly - higher CO ₂ emissions			
England & Wales		EU Directive 2002/91/EC	

Pearson
Keehan