

## Venterdon, Callington, PL17

Offers Over £800,000

5 4 2

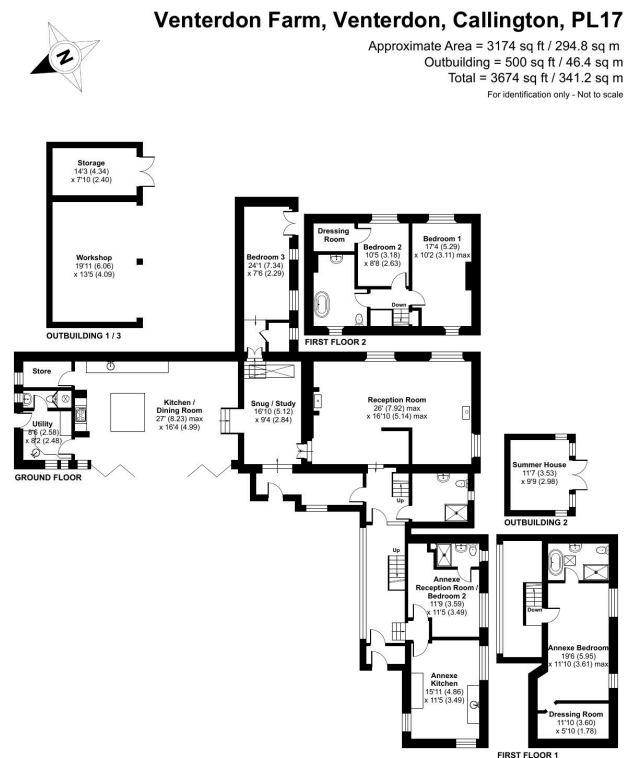


A most attractive and truly impressive farmhouse, set within approximately 2.54 acres including a 1.78-acre paddock. This unique property features a gated private driveway, car port/workshop, and a self-contained one/two-bedroom annexe. Offering approximately 3,674 sq ft of accommodation, this beautifully presented property is perfect for those seeking multi-generational living or a potential holiday let opportunity.

Situated within the hamlet of Venterdon, just moments from the highly regarded village of Stoke Climsland. Village amenities include the Village Hall, Parish Church, Village Shop/Post Office, Old School Community Centre, Sports & Social Club and Primary School.

## Key Features

- TO ARRANGE A VIEWING PLEASE QUOTE BL0650
- Truly Impressive Farmhouse
- One/Two Bedroom Annexe
- Set Within 2.54 Acres
- Electric Gates With Driveway & Ample Parking
- Car Port/Workshop
- Previous Planning Permisson For Separate Detached Dwelling
- Stunning Kitchen/Dining Room
- Multi-Generational Living Or Holiday Let Opportunity
- Freehold



Floor plan produced in accordance with RICS Property Measurement Standards incorporating International Property Measurement Standards (IPMS2 Residential). © nichecom 2026. Produced for eXp Agent (DD). REF: 1450637