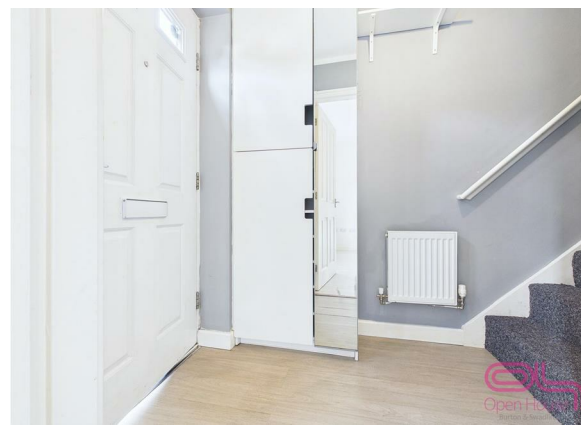


Blakeholme Court, Burton-On-Trent, DE14 2QN

£185,000

Council Tax Band: C



Offered to the market with no upward chain, this well-presented three-bedroom home is situated within a quiet residential position in the popular Horninglow area. Finished to a good standard throughout, the property offers spacious and practical accommodation ideal for first-time buyers, young families or investors alike.

The home benefits from a spacious lounge, a modern kitchen/diner, downstairs WC, three good-sized bedrooms and a private enclosed rear garden, along with allocated off-road parking. Conveniently positioned close to local amenities, schools and commuter links, the property offers a fantastic opportunity to move straight into a well-maintained home.



Open House Burton & Swadlincote



Energy Efficiency Rating		Current	Potential
Very energy efficient - lower running costs			
(92 plus)	<b>A</b>		<b>92</b>
(81-91)	<b>B</b>		
(69-80)	<b>C</b>	<b>77</b>	
(55-68)	<b>D</b>		
(39-54)	<b>E</b>		
(21-38)	<b>F</b>		
(1-20)	<b>G</b>		
Not energy efficient - higher running costs			
<b>England &amp; Wales</b>		EU Directive 2002/91/EC	