

Lewis
King



523 Crewe Road, Sandbach, CW11 3RX

£190,000





£190,000

523 Crewe Road

Sandbach, CW11 3RX

- Modernized contemporary interior throughout
- Cozy cottage charm throughout
- Spacious garden and patio
- Move-in ready condition
- Updated ensuite and bathroom
- Integrated oven and hob
- Desirable Wheelock village location
- Freehold home

This delightful terraced home on Crewe Road perfectly balances traditional cottage appeal with a crisp, contemporary interior. Having been thoughtfully updated throughout, this property offers a turnkey lifestyle for first-time buyers or those looking to downsize without compromising on style.

The ground floor is intelligently arranged, starting with a cozy living room that serves as a warm and inviting retreat at the front of the home. Moving through the central hallway, you will find the main family bathroom, which has been beautifully modernised with high-quality fixtures. To the rear, the heart of the home is the impressive kitchen. This bright space features sleek cabinetry with an integrated oven and electric hob, while still providing ample room and plumbing for a washing machine and a fridge/freezer. A door leads directly from the kitchen to the garden, making it a breeze to transition between indoor cooking and outdoor dining.

Upstairs, the property continues to surprise with two well-proportioned bedrooms. The primary bedroom is particularly notable, benefiting from its own private ensuite shower room which has been tastefully updated to match the home's modern aesthetic.

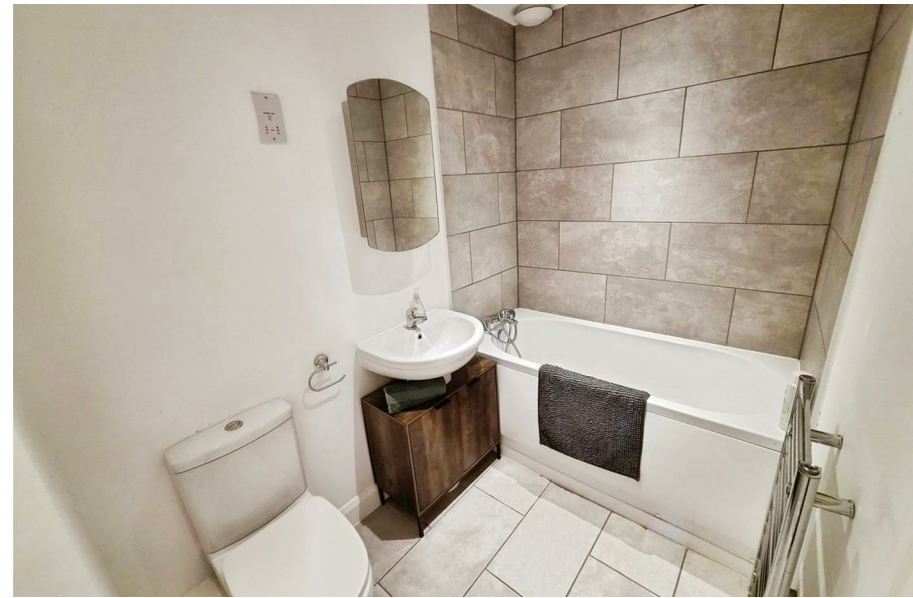
The outdoor space is a true highlight of this Crewe Road gem. The generous rear garden has been designed for enjoyment and ease of maintenance, featuring a paved patio area perfect for summer barbecues and a lush lawn that provides a private green escape.

Situated within walking distance of Wheelock's local amenities and offering excellent transport links to nearby Sandbach and the M6, this home combines village charm with ultimate modern convenience. Ready to move straight into, this is an opportunity not to be missed.



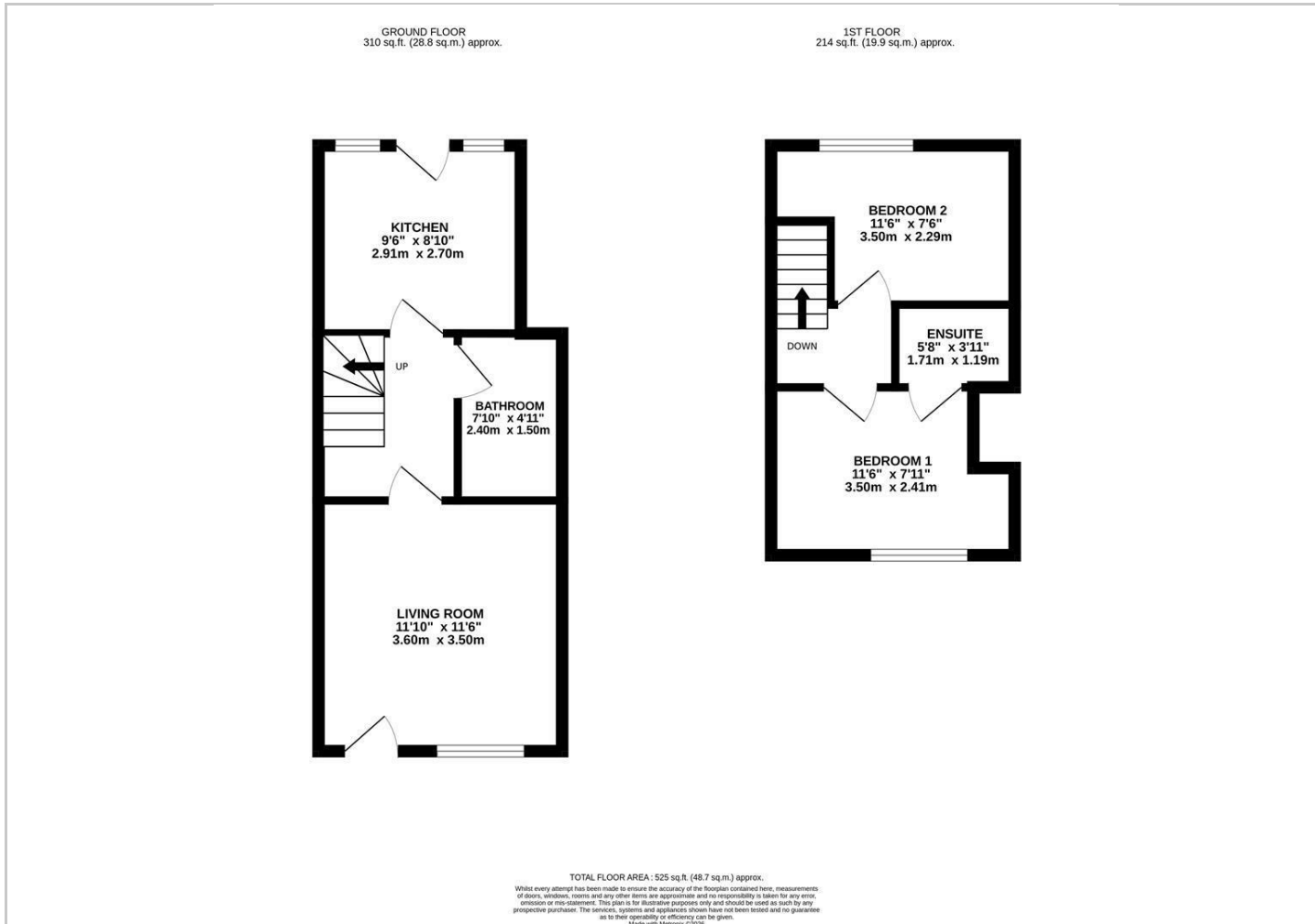


Directions





Floor Plans

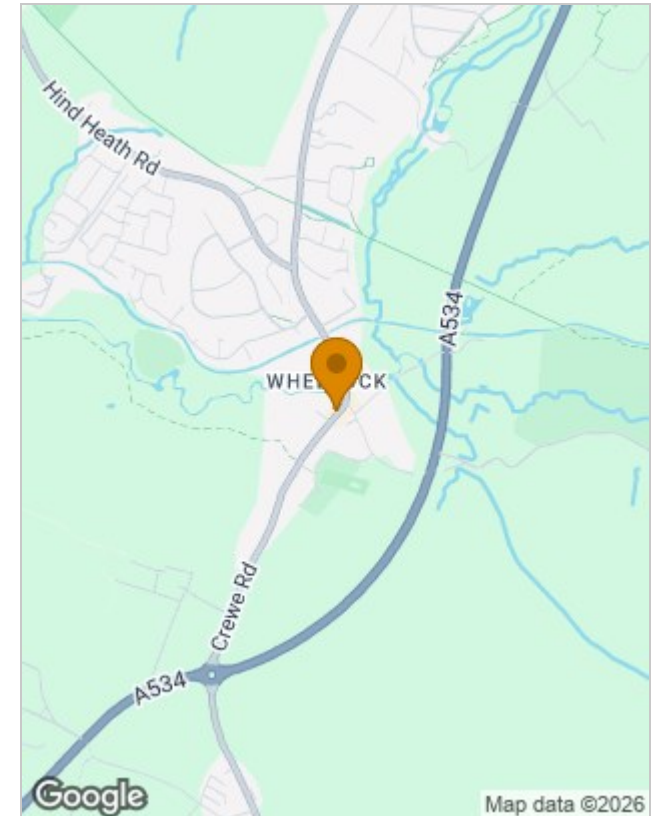


Viewing

Please contact our Sandbach Office on 01270 353753 if you wish to arrange a viewing appointment for this property or require further information.

The particulars are set out as a general outline only for the guidance of intended purchasers or lessees, and do not constitute, any part of a contract. Nothing in these particulars shall be deemed to be a statement that the property is in good structural condition or otherwise nor that any of the services, appliances, equipment or facilities are in good working order. Purchasers should satisfy themselves of this prior to purchasing.

Location Map



Energy Performance Graph

