

Road Map



Hybrid Map



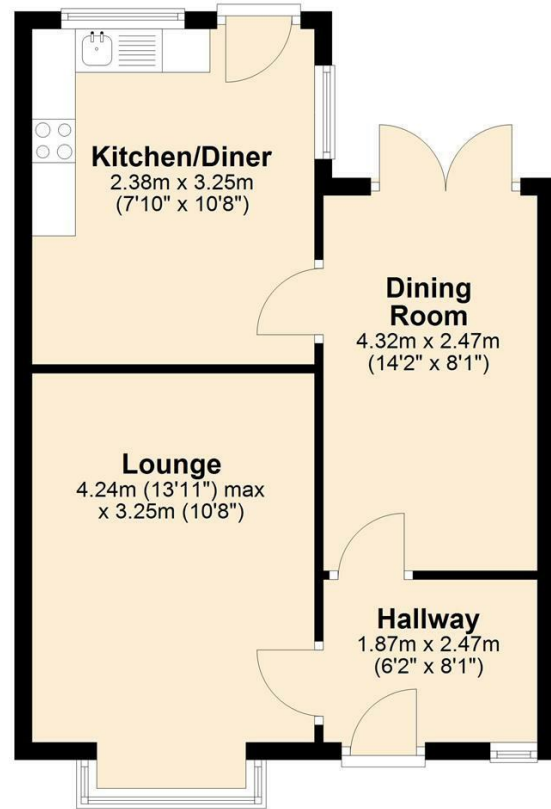
Terrain Map



Floor Plan

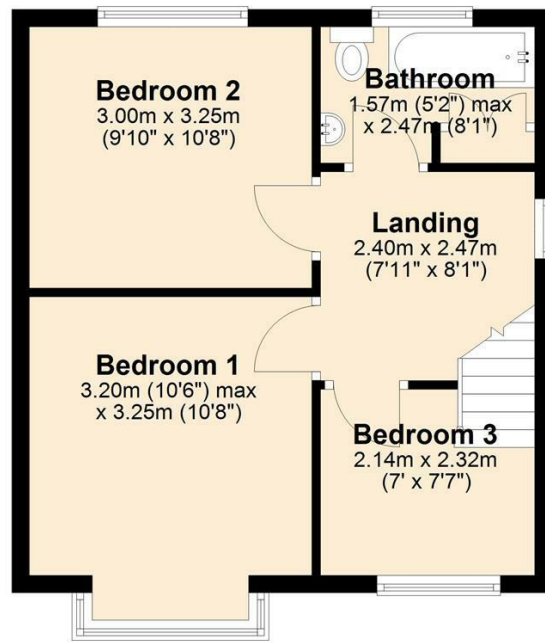
Ground Floor

Approx. 43.3 sq. metres (465.6 sq. feet)



First Floor

Approx. 36.8 sq. metres (396.5 sq. feet)



51 Manor Drive

, Thornton Cleveleys, FY5 1ET

£850 PCM

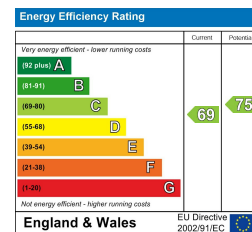


Viewings

Please contact our iMove Sales & Lettings Office on 01253 883311 if you wish to arrange a viewing appointment for this property or require further information.

These particulars, whilst believed to be accurate are set out as a general outline only for guidance and do not constitute any part of an offer or contract. Intending purchasers should not rely on them as statements of representation of fact, but must satisfy themselves by inspection or otherwise as to their accuracy. No person in this firm's employment has the authority to make or give any representation or warranty in respect of the property.

Energy Efficiency Graph



Make your next move with... **imove**

Call us now on **01253 883311**

hello@imovetoday.co.uk



51 Manor Drive

, Thornton Cleveleys, FY5 1ET

£850 PCM



Additional Information

Council Tax Band B - Wyre Borough Council
EPC Rating D

Gas central heating throughout

iMove Lettings (Fylde) Ltd are members of The
Property Ombudsman for Residential Lettings
redress scheme

Please note, a holding deposit of £50 per applicant
will be required to reserve the property. The terms of the
holding deposit will be set out in writing before
payment of this is requested.

