



jordan fishwick

MANCHESTER
Clyde Road



**Clyde Road,
Manchester, M20 2JN**
£1,250 Per Calendar Month



The Property

***** AVAILABLE SEPTEMBER ***** A stunning one bedroom furnished apartment forming part of a purpose built development on a popular road in West Didsbury. The property is modern in design throughout and offers generous living space. Perfectly suited to a professional individual or couple, the property is situated within walking distance into West Didsbury and all required amenities. The property briefly comprises; open plan kitchen/diner, one double bedroom and a three-piece bathroom suite. There are double doors from the kitchen opening on to rear decking and private back garden. On-street parking available without the need for a permit from the council at the time of writing. To view this property please contact our Didsbury office.

Virtual Viewing - <https://youtu.be/Llc3A-sCUIg>

EPC Rating - C // Council Tax Band - A

Directions

M20 2JN



- Available September
- One Bedroom
- Ground Floor Apartment
- Furnished
- Modern Decor Throughout
- Ideal for Single Occupants / Couples
- Close to all Local Amenities
- Private Garden
- Council Tax Band A
- EPC Rating C

Postcode - M20 2JN

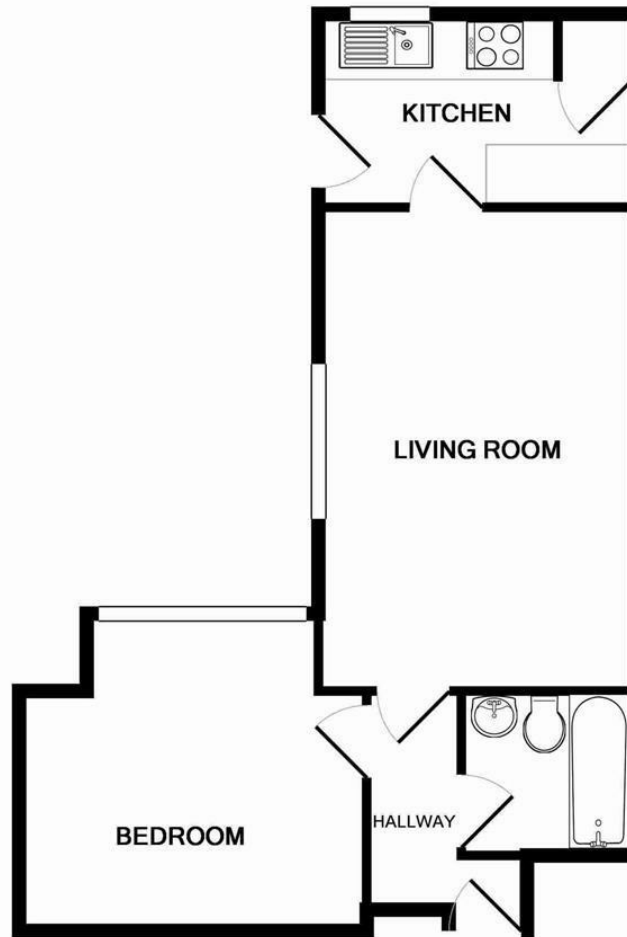
EPC Rating - C

Floor Area - sq ft

Local Authority - Manchester

Council Tax - A





Whilst every attempt has been made to ensure the accuracy of the floor plan contained here, measurements of doors, windows, rooms and any other items are approximate and no responsibility is taken for any error, omission, or mis-statement. This plan is for illustrative purposes only and should be used as such by any prospective purchaser. The services, systems and appliances shown have not been tested and no guarantee as to their operability or efficiency can be given
Made with Metropix ©2016



These particulars are believed to be accurate but they are not guaranteed and do not form a contract. Neither Jordan Fishwick nor the vendor or lessor accept any responsibility in respect of these particulars, which are not intended to be statements or representations of fact and any intending purchaser or lessee must satisfy himself by inspection or otherwise as to the correctness of each of the statements contained in these particulars. Any floorplans on this brochure are for illustrative purposes only and are not necessarily to scale.

Offices also at: Wilmslow, Macclesfield, Hale, Sale, Chorlton, Glossop, Manchester & Salford

757-759 Wilmslow Road, Didsbury Village, Manchester

0161 445 4480

didsbury@jordanfishwick.co.uk
www.jordanfishwick.co.uk