

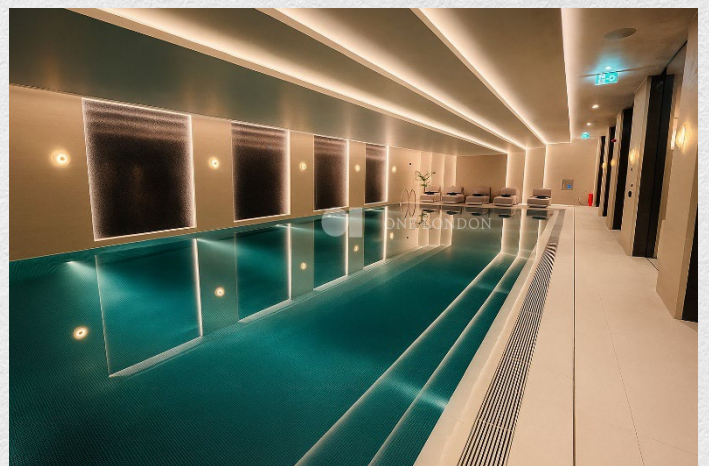
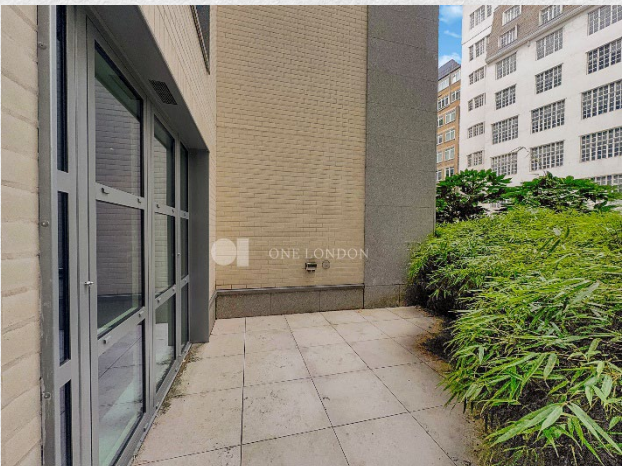
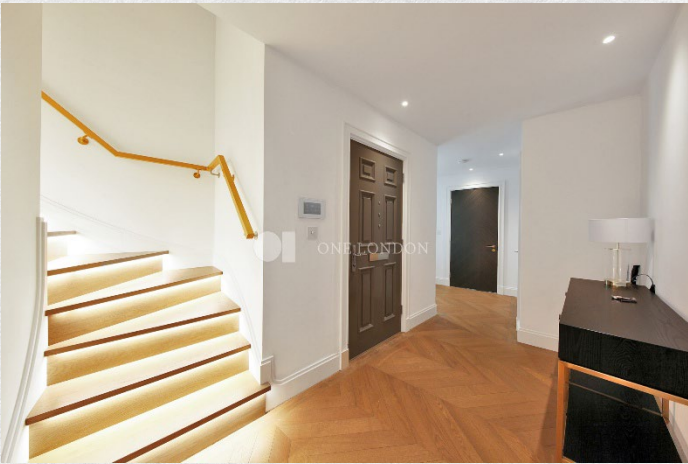


## 9 Millbank Quarter, London, SW1P

£7,367 pcm

- Two-bedroom Duplex Apartment *Experience refined riverside living in this beautifully designed duplex at 9 Millbank, a prestigious address perched on the banks of the Thames.*
- Three luxurious bathrooms
- Grade II listed building *Spanning an impressive 1,372 square feet, the ground floor centres on a vast open-plan kitchen, dining, and living area that flows effortlessly onto a private terrace—perfect for entertaining. This level also includes a practical utility room and a guest bathroom.*
- Private balcony
- Premium residents' amenities
- Large dining area *The upper floor serves as a private sanctuary, featuring two generous en-suite bedrooms. The master suite is a particular highlight, complete with a dedicated walk-in wardrobe. For year-round comfort, the entire home features underfloor heating, with integrated cooling in all reception rooms and bedrooms.*
- approx.- 1,371 sq ft
- Desirable location,
- 24-hour concierge and security

*Living at 9 Millbank grants access to world-class amenities, including a 24-hour concierge, a gym, a swimming pool, and a cinema. Ideally situated near Westminster and Knightsbridge, the property puts West End theaters and elite dining at your doorstep. With superb transport links nearby, this duplex offers the ultimate blend of luxury, space, and central London convenience.*





ONE LONDON

PROPERTY

9 Millbank, Westminster,  
London SW1P

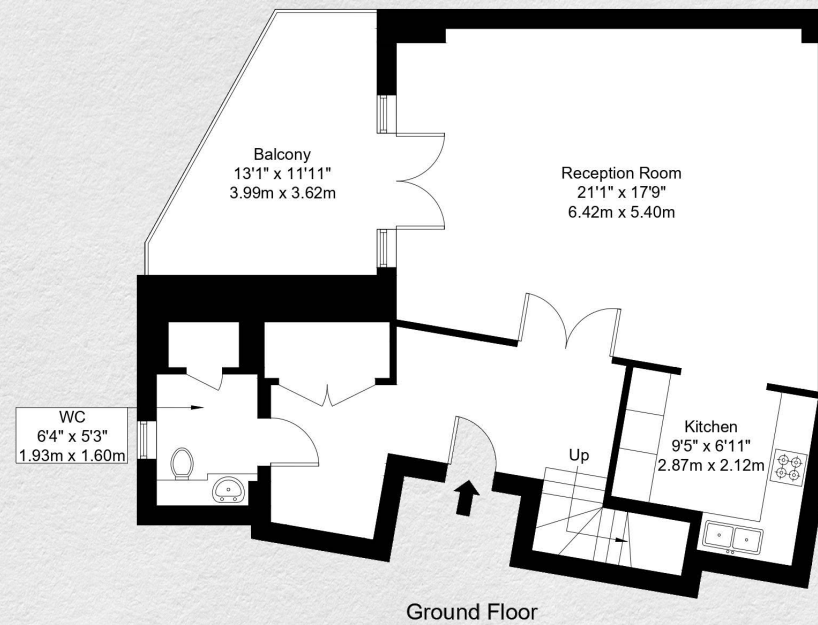
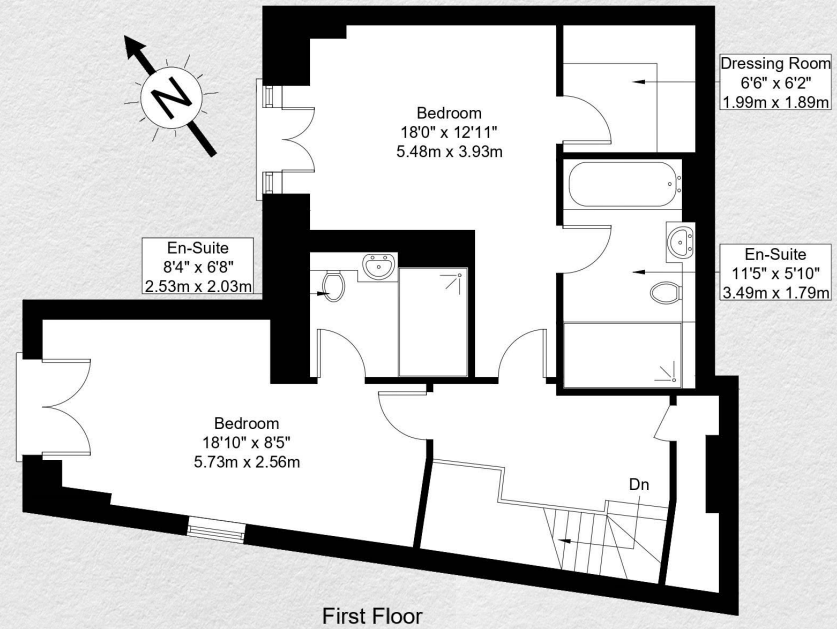
SIZE

1,371 sq ft

Duplex Apartment  
Two bedrooms / Three bathrooms

CONTACT

0207 856 0396  
info@one-london.uk  
www.one-london.uk



\*\* For illustration purposes only. Could not be to scale.  
One-London aims to ensure accuracy but is not liable  
for any discrepancies.

AL76Q