



## 73 Lady Jane Grey Road, King's Lynn PE30 2NT

£210,000

3 1 1



**RUSSEN & TURNER**  
www.russenandturner.co.uk



If you're searching for a home that perfectly balances space, style and everyday convenience, this beautifully presented three-bedroom end-of-terrace house could be exactly what you've been waiting for. A warm, welcoming home in a great location, this property is perfectly suited to those taking their first step onto the property ladder or families looking for space, comfort and convenience in equal measure.

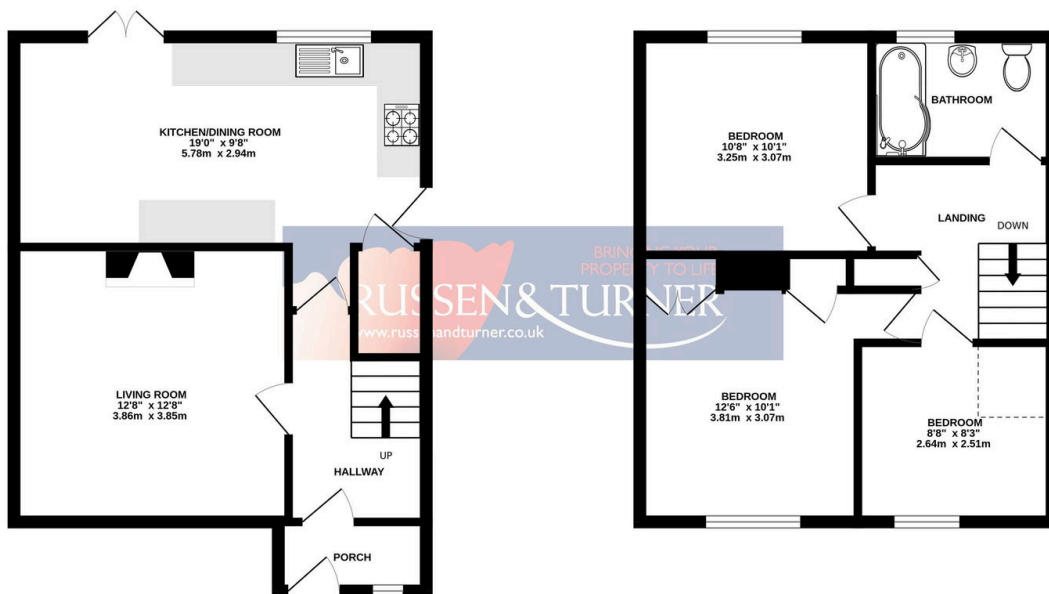


## Key Features

- Council Tax Band - A
- Ideal First or Family Home
- Off-road Parking
- Gas Central Heating
- Three Bedrooms
- Close to Local Leisure Centre and Schools
- Generous Room Proportions
- Private and Deceptively Large Rear Garden
- Wonderfully Presented - Move in Ready
- End of Terrace House

GROUND FLOOR  
439 sq.ft. (40.8 sq.m.) approx.

1ST FLOOR  
420 sq.ft. (39.0 sq.m.) approx.



TOTAL FLOOR AREA : 859 sq.ft. (79.8 sq.m.) approx.

Whilst every attempt has been made to ensure the accuracy of the floorplan contained here, measurements of doors, windows, rooms and any other items are approximate and no responsibility is taken for any error, omission or mis-statement. This plan is for illustrative purposes only and should be used as such by any prospective purchaser. The services, systems and appliances shown have not been tested and no guarantee as to their operability or efficiency can be given.

Made with Metropix ©2026

